

Drywall Access Panel with Fully Detachable Hatch

Aluminum frame, with drywall inlay, for ceilings, drywall, and various applications - System BA-F2A

NEW



Ready-to-paint door leaf

Description

The access panel consists of a welded aluminum frame and is available with 1/2" (12.7 mm) or 5/8" (15.9 mm) inlaid drywall and two latches.

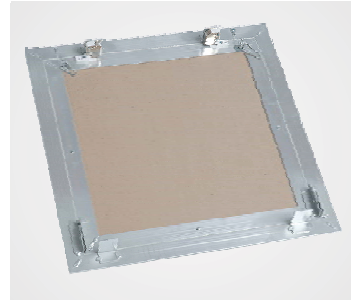
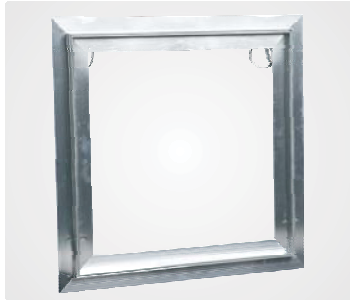
Both an outer and an inner frame assembly consists of high grade aluminum which is bonded with a special welding process.

For sizes 12" x 12" (305 mm x 305 mm) and up the access panels are equipped with a safety-system to prevent accidental opening. This safety system must be reattached if the hatch is removed.

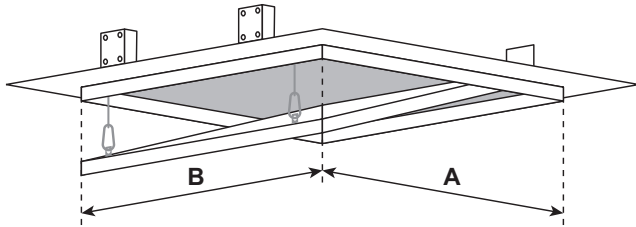
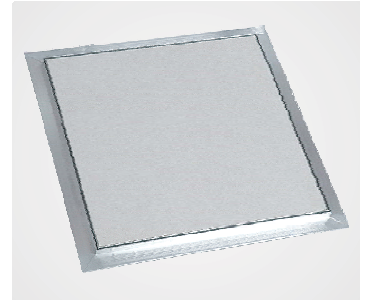
A reveal of just 1/16" (1,59 mm) is all that is visible of the access panel that blends into a wall or ceiling.

The concealed snap locks open the access panel when pressure is applied to the spring loaded latch side.

The panel door is equipped with a perimeter seal.



Fully detachable hatch



Customized solutions

Customized sizes can be produced in every dimension upon request.

Drywall insert with screws on larger sizes than 24" x 24" (610 mm x 610 mm).

System BA-F2A	Dimensions	
Code	A inch mm	B inch mm
A203203G127	8" 203	8" 203
A305305G127	12" 305	12" 305
A406406G127	16" 406	16" 406
A508508G127	20" 508	20" 508
A610610G127	24" 610	24" 610

All standard sizes are available in 1/2" (12.7 mm) or 5/8" (15.9 mm) drywall.

Options

- SD** Screwdriver operated cam latch
- FS** Screwdriver operated four-square cam latch
- Z** Round Cylinder Lock with Key
- M** Mortise Cylinder Lock Preparation
- H** Hex Head Cam Latch
- P** Pinned Hex Head Cam Latch

Rough opening is door size + 3/8" (9 mm)

Fully Detachable Hatch



Best Access Doors

Advantages of BestAccessDoors

- Superior engineering & innovative design
- Fast delivery
- Quick and easy installation
- Solid aluminum frame
- Flush installation in ceilings and walls
- Available in moisture / mildew resistant green board and cement board

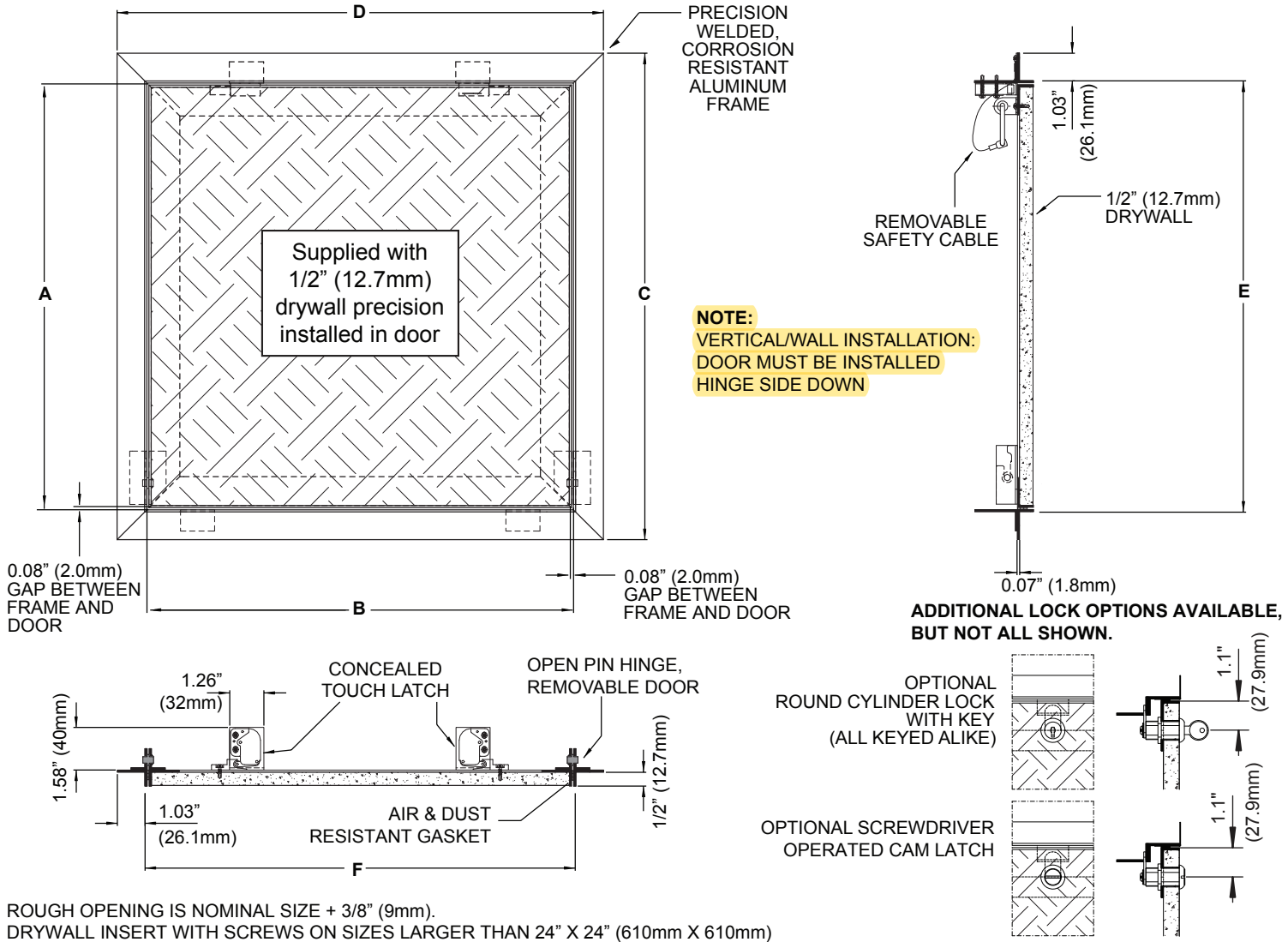


228 Park Ave S # 76520
 New York NY 10003-1502
 United States
 www.BestAccessDoors.com
 sales@bestaccessdoors.com
 Tel.: 1-800-483-0823 | Fax: 1-888-828-6021

BA-F2A

1/2"
12.7mm

OPEN HINGE, REMOVABLE DOOR FOR 5/8" (15.9MM) DRYWALL, AIR & DUST RESISTANT, FOR NON-RATED WALLS AND CEILINGS.



ROUGH OPENING IS NOMINAL SIZE + 3/8" (9mm).
 DRYWALL INSERT WITH SCREWS ON SIZES LARGER THAN 24" X 24" (610mm X 610mm)

STANDARD FEATURES

CONCEALED TOUCH LATCH; OPEN HINGE, REMOVABLE DOOR; FITS 5/8" (15.9MM) DRYWALL; AIR & DUST RESISTANT GASKET; FOR NON-RATED WALLS & CEILINGS; ALUMINUM FRAME & DOOR STRUCTURE, WELDED, MILL FINISH; NON-SNAG REMOVABLE SAFETY CABLE

DOOR PANEL OPTION

LOCK OPTIONS

QTY.	NOMINAL SIZE		A		B		C		D		E		F		LATCHES
	Inch	mm	Inch	mm	Inch	mm	Inch	mm	Inch	mm	Inch	mm	Inch	mm	
	8 x 8	203 x 203	8.00	203	8.00	203	10.20	258	10.20	258	8.14	207	8.14	207	2
	12 x 12	305 x 305	12.00	305	12.00	305	14.20	359	14.20	359	12.14	308	12.14	308	2
	16 x 16	406 x 406	16.00	406	16.00	406	18.20	461	18.20	461	16.14	410	16.14	410	2
	18 x 18	457 x 457	18.00	457	18.00	457	20.20	512	20.20	512	22.14	461	22.14	461	2
	20 x 20	508 x 508	20.00	508	20.00	508	22.20	562	22.20	562	20.14	512	20.14	512	2
	24 x 24	610 x 610	24.00	610	24.00	610	26.20	664	26.20	664	24.14	613	24.14	613	2
	24 x 36	610 x 915	24.00	610	36.00	915	26.20	664	38.20	969	24.14	613	36.14	919	3

SELECTION SUMMARY & APPROVAL FOR MANUFACTURING

Model Number & Options:

Quantity:

Quote by:

Company:

Project/Job:

Contact:

Title:

Approval for Manufacturing/Signature:

Date:

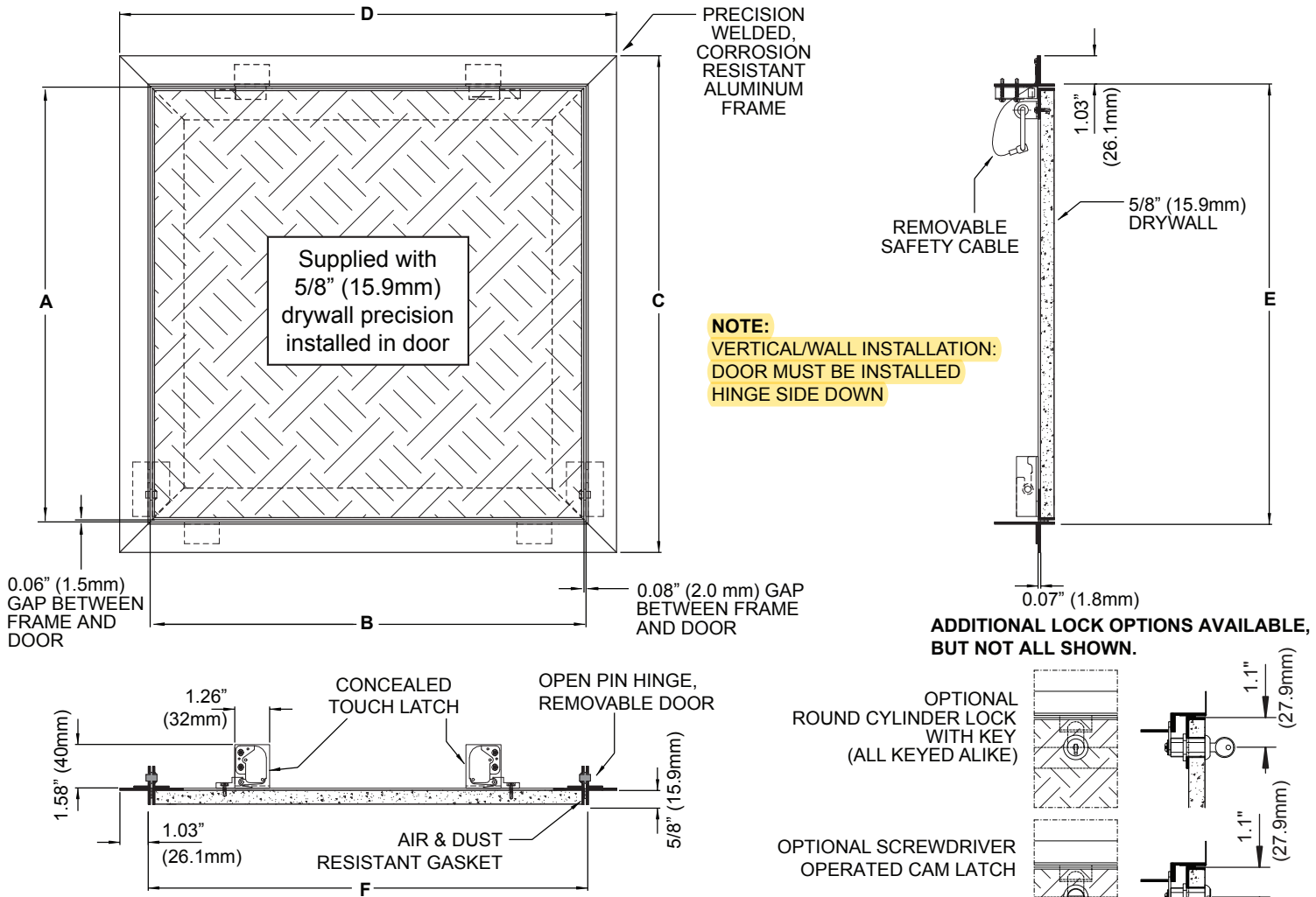


228 Park Ave S # 76520
 New York NY 10003-1502
 United States
 www.BestAccessDoors.com
 sales@bestaccessdoors.com
 Tel.: 1-800-483-0823 | Fax: 1-888-828-6021

BA-F2A

5/8"
15.9mm

OPEN HINGE, REMOVABLE DOOR FOR
 5/8" (15.9MM) DRYWALL, AIR & DUST RESIS-
 TANT, FOR NON-RATED WALLS AND CEILINGS.



ROUGH OPENING IS NOMINAL SIZE + 3/8" (9mm).
 DRYWALL INSERT WITH SCREWS ON SIZES LARGER THAN 24" X 24" (610mm X 610mm)

STANDARD FEATURES CONCEALED TOUCH LATCH; OPEN HINGE, REMOVABLE DOOR; SUPPLIED TO FIT 5/8" (15.9MM) DRYWALL; AIR & DUST RESISTANT GASKET; FOR NON-RATED WALLS & CEILINGS; ALUMINUM FRAME AND DOOR STRUCTURE, WELDED, MILL FINISH; NON-SNAG REMOVABLE SAFETY CABLE	DOOR PANEL OPTION <input type="checkbox"/> <input type="checkbox"/>	LOCK OPTIONS <input type="checkbox"/> <input type="checkbox"/>
--	--	---

QTY.	NOMINAL SIZE Inch mm	A Inch mm	B Inch mm	C Inch mm	D Inch mm	E Inch mm	F Inch mm	LATCHES

SELECTION SUMMARY & APPROVAL FOR MANUFACTURING

Model Number & Options:	Quantity:	Quote by:
Company:	Project/Job:	
Contact:	Title:	
Approval for Manufacturing/Signature:		Date: