



Quality Access Doors- FAST!

SUBMITTAL/TECHNICAL DATA SHEET

SKU: **BA-KSTC**

SESAME CONCEALED GRID CEILING HATCH



DESCRIPTION

The BA-KSTC is designed for use with concealed and exposed grid systems, respectively. Panel opens up to receive tile.

Door panel on the sesame doors will open to a check position for safety and then release for a 90° opening and is removable.

SPECIFICATION

MATERIAL: 20 gauge cold rolled steel

LOCK/LATCH: Plastic grommets and be square head key wrench operated

HINGE: Concealed pivot rod

FINISH: Prime coat of rust inhibitive electrostatic powder, baked grey enamel

GASKETING: Flame retardant polyurethane

CONSTRUCTION

1. Frame shall be 20 gauge hot dipped galvanized steel with a rib containing a flame retardant polyurethane gasket.

2. Door shall be 20 gauge electro-galvanized mild steel.

3. Escutcheon caps shall be plastic molded with hinged flaps.

4. Locks shall be budget locks operated with square shanked key.

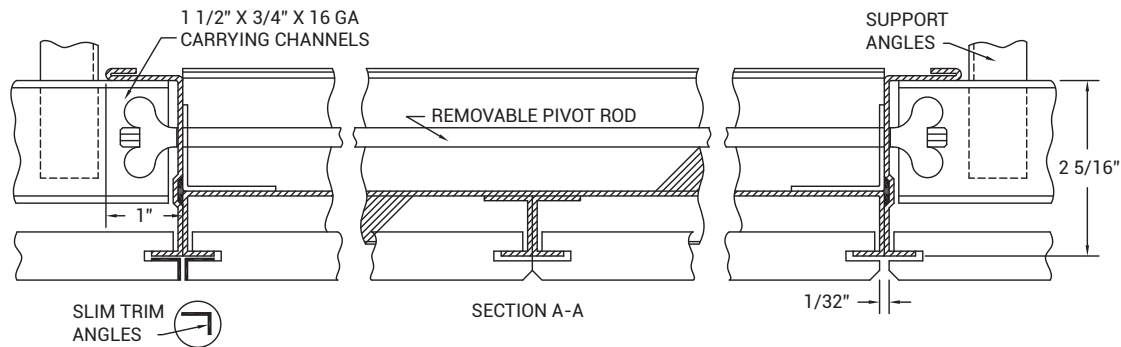
■ DIMENSIONS AND APPEARANCE

>> [CLICK TO VIEW ADDITIONAL DETAILS AND PRICING <<](#)

STANDARD SIZES:

DOOR SIZE W" X H"	SHIP WEIGHT LBS.
24" X 24"	19 LBS
24" X 48"	35 LBS

(Special Sizes On Request)



For a complete list of options visit www.BestAccessDoors.com

■ PROJECT DATA

Custom Sizes Available - Fast!

Scan or Click



To view Pricing and Additional Product Info.

PROJECT NAME :	QTY	W	H	OPTIONS
ARCHITECT :				
DEALER :				
CONTRACTOR :				
LOCATION :	SPECIAL INSTRUCTIONS :			
DATE :	SUBMITTAL APPROVAL : (signature or stamp)			
TAGGING INSTRUCTIONS :				

TELEPHONE:
1-800-483-0823
FAX:
1-888-828-6021



228 PARK AVE. S. #76520
NEW YORK, NY, 10003



WEBSITE:
www.BestAccessDoors.com
E-MAIL:
info@bestaccessdoors.com