



Quality Access Doors- FAST!

SUBMITTAL/TECHNICAL DATA SHEET

STANDARD OPTIONS

- MATERIAL:**
14 gauge galvalume steel
- HINGE:**
Continuous piano hinge
- LOCK / LATCH:**
Key operated cylinder cam latch
- FINISH:**
High quality white powder coat primer
- PACKAGING:**
Individually wrapped, 1 per box



SKU: **BA-MDS**

MEDIUM SECURITY ACCESS DOOR

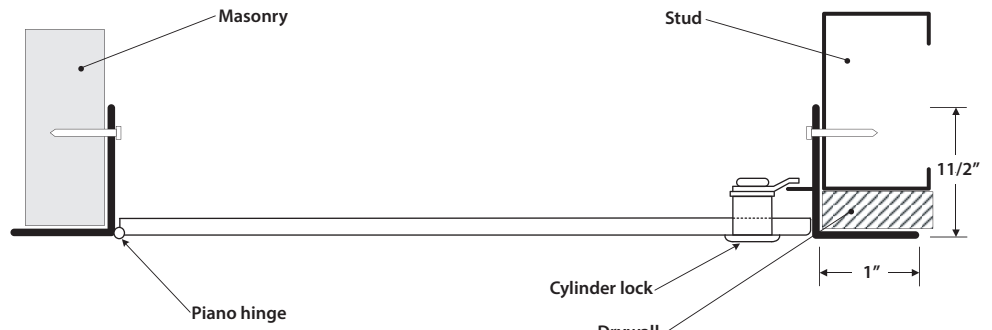
FOR ALL SURFACE TYPES

OPTIONS AVAILABLE

- LOCK / LATCH:**
- 4" Key handle operated cam latch
 - Mortise deadbolt lock
 - Pinned hex head cam latch
 - Mortise preparation for cylinder (Cylinder optional)
- MATERIAL:**
Stainless steel 304 #4 (brushed finish)

INSTALLATION

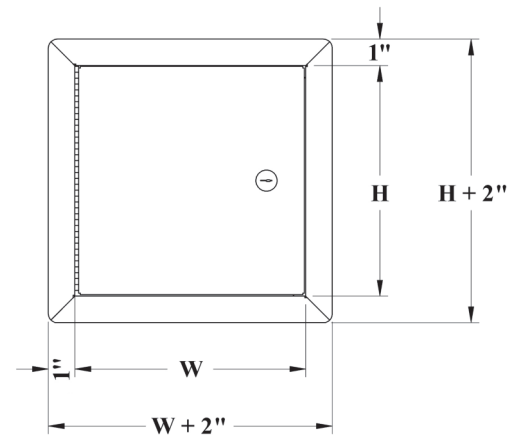
>> CLICK TO VIEW ADDITIONAL DETAILS AND PRICING <<



For a complete list of options visit www.BestAccessDoors.com

DIMENSIONS AND APPEARANCE

DOOR SIZE W x H INCHES (MM)	NUMBER OF LOCKS	WEIGHT LBS	KG
12 x 12 (304 x 304)	1	2.7	6
16 x 16 (406 x 406)	1	3.2	7
18 x 18 (457 x 457)	1	11	5
24 x 24 (609 x 609)	1	8.6	19
24 x 30 (609 x 762)	2	10.9	24
24 x 36 (609 x 914)	2	12.2	27
36 x 36 (914 x 914)	2	18.6	41
Rough wall opening door size + 1/4" or +6mm			



Scan or Click



To view Pricing and Additional Product Info.

PROJECT DATA

Custom Sizes Available - Fast!

PROJECT NAME :	QTY	W	H	OPTIONS
ARCHITECT :				
DEALER :				
CONTRACTOR :				
LOCATION :	SPECIAL INSTRUCTIONS :			
DATE :				
TAGGING INSTRUCTIONS :	SUBMITTAL APPROVAL : (signature or stamp)			

LEED READY: THIS PRODUCT CONTRIBUTES TO LEED® CREDITS



TELEPHONE:
1-800-483-0823

FAX:
1-888-828-6021



228 PARK AVE. S. #76520
NEW YORK, NY, 10003



WEBSITE:
www.BestAccessDoors.com

E-MAIL:
info@bestaccessdoors.com