

BA-ADWT-PC

TECHNICAL DATA SHEET



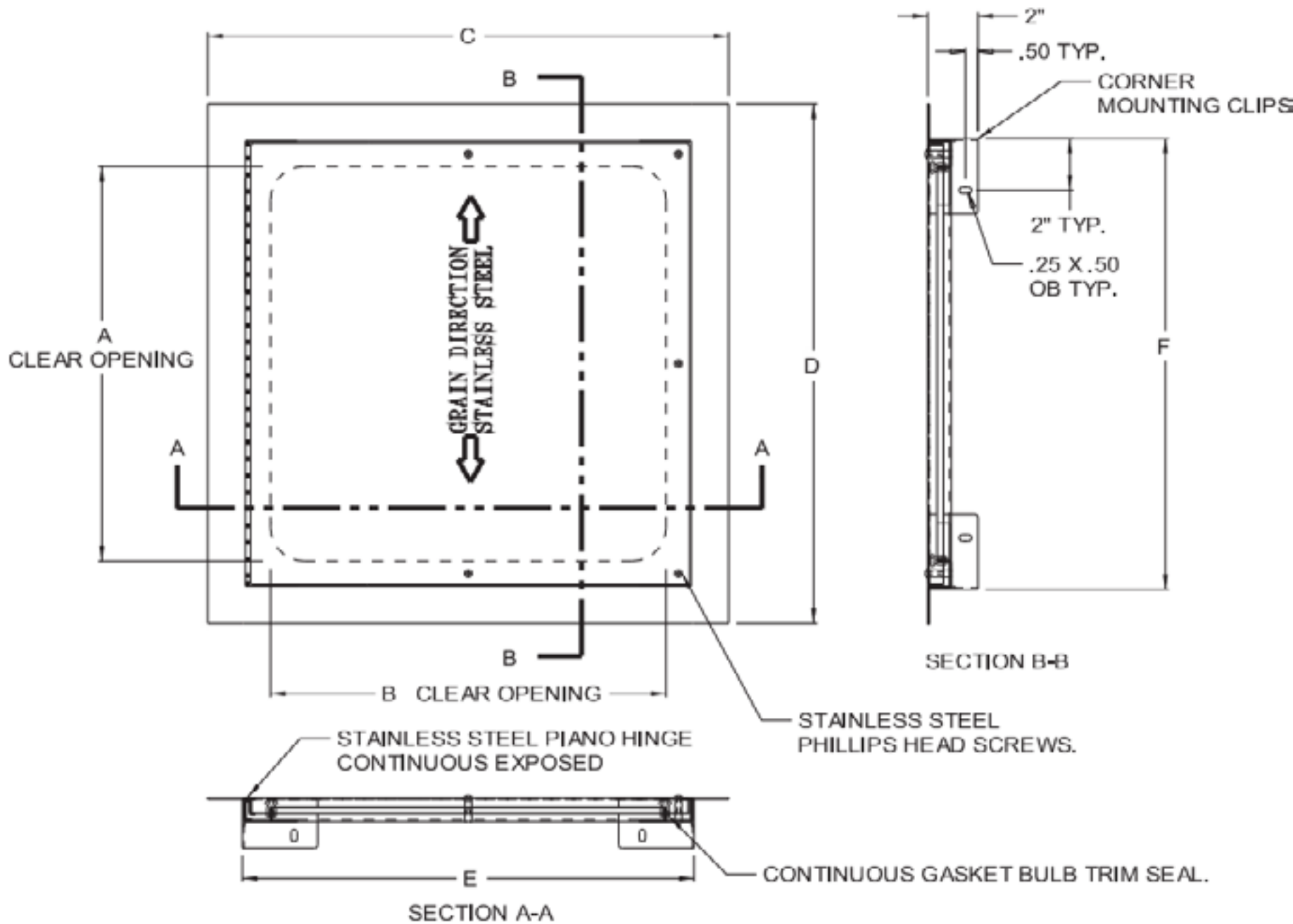
AIRTIGHT /
WATERTIGHT PANEL
- PRIME COATED

SKU: **BA-ADWT-PC**



[CLICK TO VIEW PRICING](#)

NOMINAL SIZE		A	B	
12 x 12	(305 x 305)	9.65 (245)	9.65 (245)	
14 x 14	(355 x 355)	11.65 (296)	11.65 (296)	
18 x 18	(457 x 457)	15.65 (397)	15.65 (397)	
24 x 24	(610 x 610)	21.65 (550)	21.65 (550)	
24 x 36	(610 x 914)	33.65 (855)	21.65 (550)	
30 x 30	(762 x 762)	27.65 (702)	27.65 (702)	
30 x 48	(762 x 1219)	45.65 (1159)	27.65 (702)	
C	D	E	F	SCREWS
14.75 (375)	14.75 (375)	12.00 (305)	12.00 (305)	2
16.75 (425)	16.75 (425)	14.00 (355)	14.00 (355)	2
20.75 (527)	20.75 (527)	18.00 (457)	18.00 (457)	2
26.75 (679)	26.75 (679)	24.00 (610)	24.00 (610)	2
26.75 (679)	38.75 (984)	24.00 (610)	36.00 (914)	3
32.75 (832)	32.75 (832)	30.00 (762)	30.00 (762)	5
32.75 (832)	50.75 (1289)	30.00 (762)	48.00 (1219)	5



THIS DOOR HAS BEEN TESTED AS FOLLOWS:
AIR INFILTRATION : LESS THAN 0.01 CFM/SQ FOOT: ASTM E 283
WATER RESISTANCE: NO LEAKAGE AT 15.05 PSF: ASTM E 331

STANDARD FEATURES:
FRAME FULLY WELDED TO PREVENT LEAKAGE.
CONTINUOUS GASKET BULB TRIM SEAL.
STAINLESS STEEL PHILLIPS HEAD SCREWS

OPTIONS:

- | | | | |
|--|---|--|-------------------------------------|
| <input type="checkbox"/> LOCK | <input type="checkbox"/> SCREW TYPE | <input type="checkbox"/> MATERIAL | <input type="checkbox"/> FINISH |
| <input type="checkbox"/> CYLINDER LOCK AND KEY | <input type="checkbox"/> ALLEN HEAD SCREW | <input type="checkbox"/> STAINLESS STEEL | <input type="checkbox"/> MILD STEEL |
| | <input type="checkbox"/> SPANNER HEAD SCREW | <input type="checkbox"/> OTHER | <input type="checkbox"/> OTHER |
| | <input type="checkbox"/> OTHER | | |

WE ALSO DO
CUSTOM!

Scan to view pricing.



TOLL FREE PHONE:
1-800-483-0823

www.BestAccessDoors.com