



Quality Access Doors- **FAST!**

## APPLICATION

Acudor Ladder Access Roof Hatches are designed to provide convenient, economical access to the roof of a building

## FEATURES

- Weather tight construction
- Convenient one-hand operation
- 12" high insulated curb
- Supports 40lbs./sq. ft. live load

## OPTIONAL FEATURES

- Stainless Steel cover, curb, and/or hardware
- Polycarbonate domes for daylighting
- Louvered Curbs
- Curb Mounted Units
- Curb pitch corrected for sloped roof
- Higher curb heights for "green roof" applications

## SPECIFICATIONS

**COVER:** Double-skin construction ("in box type design") with 1" cellulose insulation and a continuous EPDM foam weather/draft seal gasket that is attached to the inside of cover to provide a flush, tight fit. Designed to support a live load of 40lbs./sq. ft., the cover is 14 gauge galvanized steel with a 22 gauge galvanized steel inside liner.

**CURB:** 14 gauge galvanized steel with 1" thick fiberboard roof insulation at curb exterior. Curb is 12" high, with 3.375" wide bottom flange and pre-drilled mounting holes.

**HINGE:** Heavy duty galvanized steel pintle hinges with 3/8" pin

**OPENING:** Gas spring operators allow cover to open and close with ease. Inside pull handle allows for easy control when closing cover.

**DOOR LATCH:** Self latching, zinc plated outside T handle with stainless steel inside lock and lever assembly. Unit also has inside and outside padlock provisions.

**FINISH:** Material is prepared with an iron phosphate wash, followed by a rust inhibiting primer, and then a baked on polyester enamel grey paint.

For a complete list of options visit  
[www.BestAccessDoors.com](http://www.BestAccessDoors.com)

# SUBMITTAL/TECHNICAL DATA SHEET

SKU: **BA-ALRH-DO**

## DOMED ROOF HATCH - ALUMINUM



## DIMENSIONS AND APPEARANCE

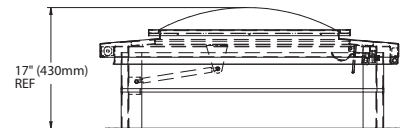
>> CLICK TO VIEW ADDITIONAL DETAILS AND PRICING <<

MODEL	CURB ID L&W INCHES (MM)	WEIGHT LBS KG
G3232	24 x 24 (610 x 610)	125 56.8
G3238	24 x 30 (610 x 762)	130 58.9
G3244	24 x 36 (610 x 914)	135 61.4
G3838	30 x 30 (762 x 762)	140 63.5
G3844	30 x 36 (762 x 914)	155 70.5
G4444	36 x 36 (914 x 914)	170 77.3

### ASSEMBLY NOTE:

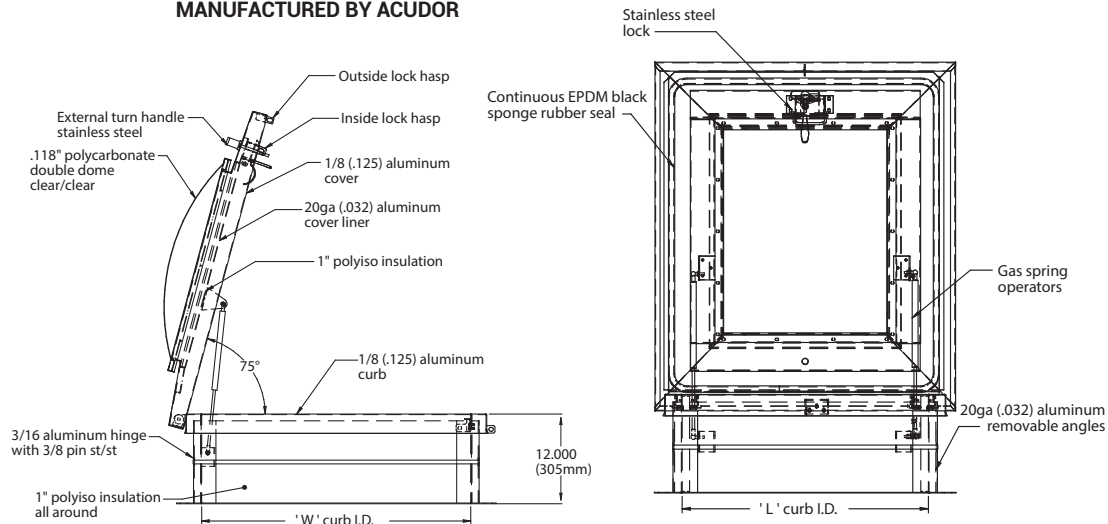
UNIT SHALL BE COMPLETELY ASSEMBLED AS SHOWN AND SUPPLIED TO JOB READY FOR INSTALLATION

FINISH: MILL FINISH



For detailed specifications see submittal sheet

### MANUFACTURED BY ACUDOR



## PROJECT DATA

Custom Sizes Available - Fast!

PROJECT NAME :	QTY	W	H	OPTIONS
ARCHITECT :				
DEALER :				
CONTRACTOR :				
LOCATION :	SPECIAL INSTRUCTIONS :			
DATE :				
TAGGING INSTRUCTIONS :	SUBMITTAL APPROVAL : (signature or stamp)			

Scan or Click



To view Pricing and  
Additional Product Info.

TELEPHONE:  
1-800-483-0823  
FAX:  
1-888-828-6021



228 PARK AVE. S. #76520  
NEW YORK, NY, 10003



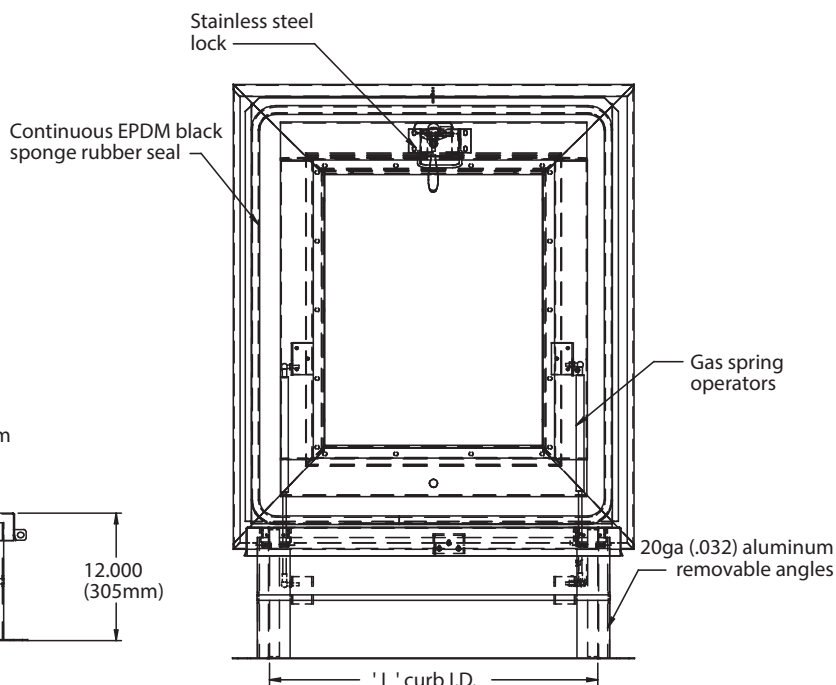
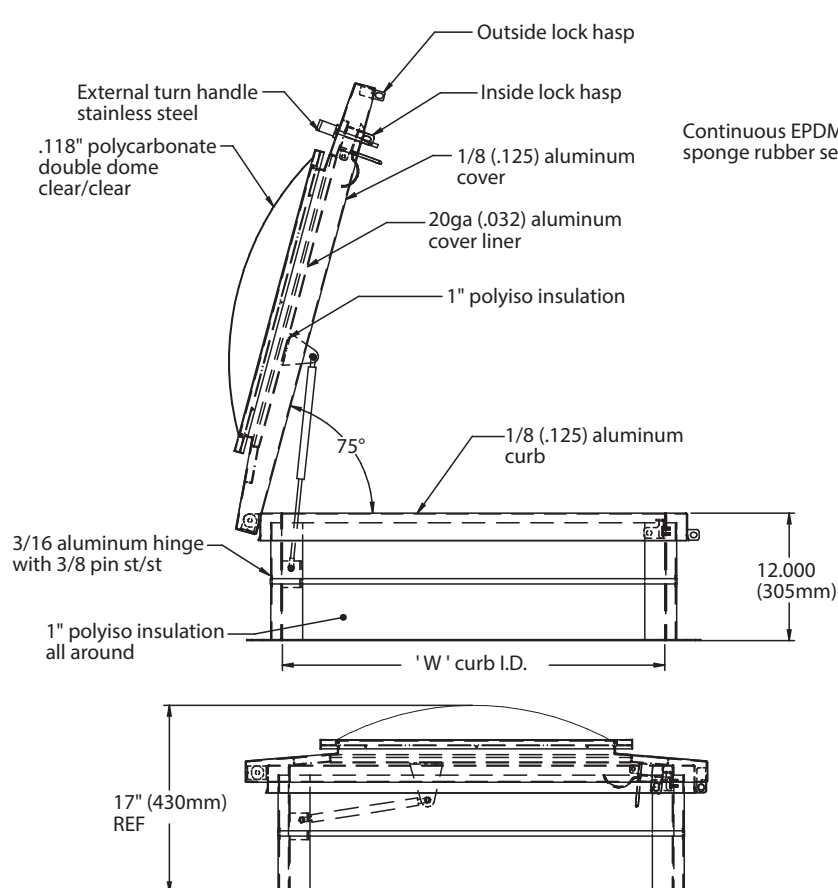
WEBSITE:  
[www.BestAccessDoors.com](http://www.BestAccessDoors.com)  
E-MAIL:  
[info@bestaccessdoors.com](mailto:info@bestaccessdoors.com)



# BA-ALRH-DO

# DOMED ROOF HATCH - ALUMINUM

QTY	OPENING WIDTH 'W'	OPENING LENGTH 'L'	QTY	OPENING WIDTH 'W'	OPENING LENGTH 'L'
	24" (610mm)	24" (610mm)		36" (914mm)	30" (762mm)
	36" (914mm)	24" (610mm)		36" (914mm)	36" (914mm)
	30" (762mm)	30" (762mm)		48" (1219mm)	48" (1219mm)



**ASSEMBLY NOTE:**  
UNIT SHALL BE COMPLETELY ASSEMBLED  
AS SHOWN AND SUPPLIED TO JOB READY  
FOR INSTALLATION

**FINISH:** MILL FINISH

**MANUFACTURED BY ACUDOR**