

Access Panel - Exterior and Interior/Aluminum

System AluLight

Exterior and Interior
Aluminum

Description

The AluLight is an aluminum, non-rated access panel suitable for any openings in interior or exterior walls. The 20 ga /1mm aluminum door provides sufficient strength for any application.

The door is equipped with fixed hinges and suitable for left- or right-hand operation.

It consists of welded aluminum frame and an aluminum door leaf supplied with a screwdriver operated cam latch or round cylinder lock with key.

Insulation: 3/4" polystyrene

Gasketing: Extruded santoprene

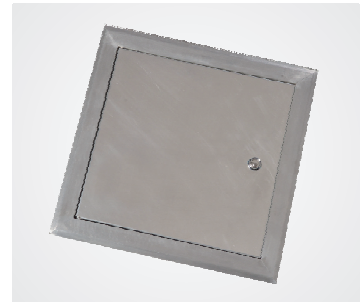
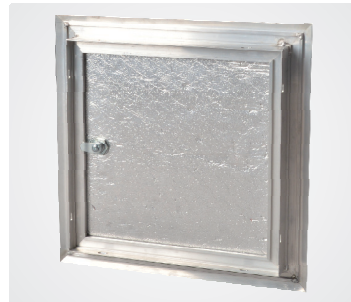
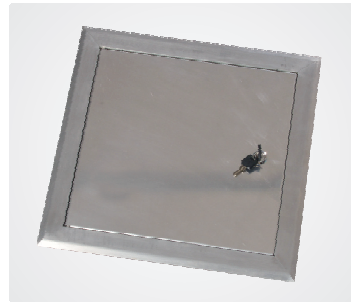
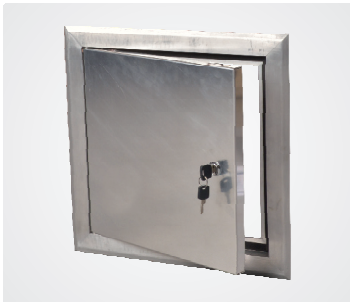
Capabilities

This panel can be mounted into any kind of walls. Simple installation due to its structure and low weight are advantages of this lightweight panel.

NEW



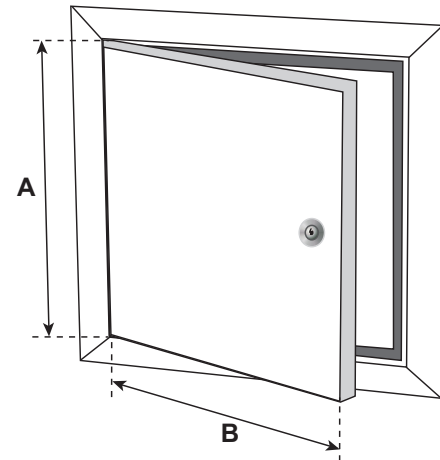
Shown with Round Cylinder Lock with Key



Click here to view the Products

AluLight access panels are available in the following standard sizes:

System AluLight	Dimensions	
Code	A inch mm	B inch mm
L305305AL	12" 305	12" 305
L406406AL	16" 406	16" 406
L508508AL	20" 508	20" 508
L610610AL	24" 610	24" 610



Options

- Z** Round Cylinder Lock with Key
- SD** Screwdriver operated cam latch

Rough opening is door size + 3/8" (9 mm)

Advantages of BestAccessDoors Panels

- Superior engineering & innovative design
- Fast delivery
- Quick and easy installation
- Economical solution
- Universal door



Best Access Doors