



Quality Access Doors- FAST!

SUBMITTAL/TECHNICAL DATA SHEET

DESCRIPTION

The Existing Opening Floor Door is designed for retrofit applications and is constructed with an angle frame. While providing a quality, economical option this is ideal for areas where water or moisture intrusion is not a concern.

FEATURES

- Pedestrian Load.
- Diamond Tread Plate.
- Material Options.
- Angle Frame.
- Drop-In Installation.

SPECIFICATIONS

LOAD: 300PSF

DOOR: Single or Double Leaf

MATERIAL:

Aluminum: 1/4 inch, mill finish, gray primer on exterior frame (for cast-in only).

Steel: 3/16 inch, mill finish.

Stainless Steel: 3/16 inch, Type 304 or Type 316, bead blasted.

COVER: Diamond tread plate.

FRAME: Angle.

INSTALLATION: Bolt-In.

SPRINGS: Enclosed coil, Type 17-7 Stainless Steel.

HINGE: Heavy-duty Type 316 Stainless Steel.

HOLD OPEN ARM: Type 316 Stainless Steel, automatic hold open arm locks cover in open position.

LATCH: Slam latch, Type 316 stainless steel, inside lever handle and key.

OPTIONS: Padlock Hasps, Locks, Finishes, Gasket, Safety Grates, Safety Nets, Safety Rails, Skirting.

WARRANTY: 5 year

For a complete list of options visit www.BestAccessDoors.com

SKU: BA-BFDEPA-SL

300PSF EXISTING OPENING FLOOR DOOR



DIMENSIONS AND APPEARANCE

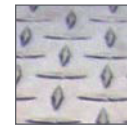
>> CLICK TO VIEW ADDITIONAL DETAILS AND PRICING <<

FIRE RATED DIAMOND TREAD FLOOR DOOR:

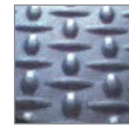
MODEL	WIDTH	X	LENGTH	LOAD	MATERIAL	COVER	DL
BFDEP							
	SINGLE LEAF		DOUBLE LEAF	H - H20 S - HS20	A - 1/4 INCH ALUMINUM P - 3/16 INCH STEEL S - 3/16 INCH TYPE 304 STAINLESS STEEL V - 3/16 INCH TYPE 316 STAINLESS STEEL	S - SINGLE LEAF D - DOUBLE LEAF	
	24" X 24" 30" X 36" 36" X 36" 42" X 42"		48" X 48" 48" X 72" 60" X 60"				

Additional sizes and options available, call for more information.

MATERIALS:



Aluminum

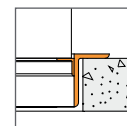


Primed Steel

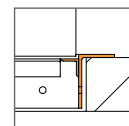


Stainless Steel

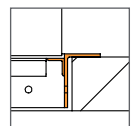
FRAME:



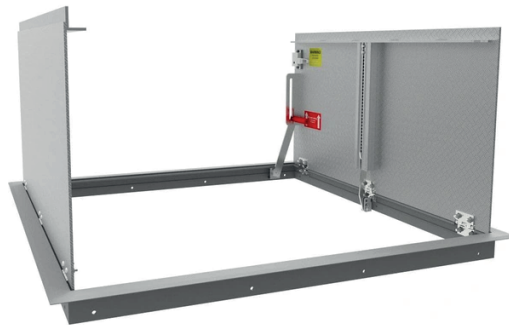
Angle Frame Bolt-in Aluminum



Angle Frame Bolt-in Steel



Angle Frame Bolt-in Stainless Steel



PROJECT DATA

Custom Sizes Available - Fast!

Scan or Click



To view Pricing and Additional Product Info.

PROJECT NAME :	QTY	W	H	OPTIONS
ARCHITECT :				
DEALER :				
CONTRACTOR :				
LOCATION :	SPECIAL INSTRUCTIONS :			
DATE :	SUBMITTAL APPROVAL : (signature or stamp)			
TAGGING INSTRUCTIONS :				

TELEPHONE:
1-800-483-0823
FAX:
1-888-828-6021



228 PARK AVE. S. #76520
NEW YORK, NY, 10003



WEBSITE:
www.BestAccessDoors.com

E-MAIL:
info@bestaccessdoors.com