



Quality Access Doors- FAST!

# SUBMITTAL/TECHNICAL DATA SHEET

## DESCRIPTION

Fire-rated architectural pan door is the industry's leading solution to offer larger sizes and fire-rated safety for new construction or replacement projects.

## FEATURES

- 2- or 3-hour fire ratings tested to NFPA 288.
- Sizes up to 52" x 96".
- Lock options for added security.
- Improved interior release handles.
- Installs in wood or concrete applications.

## SPECIFICATIONS

### LOAD:

- 250 psf live load for sizes up to 48" x 60"
- 150 psf live load for sizes above 48" x 60" up to a maximum of 52" x 96"

DOOR: Single

### MATERIAL:

Aluminum: 1/4 inch, mill finish.

COVER: Diamond tread plate.

FIRE-RATING: 2-hour or 3-hour.

FRAME: Angle Frame, Thermally Broken.

INSTALLATION: Cast-In or Bolt-In.

SPRINGS: Enclosed coil, Type 17-7 Stainless Steel.

HINGE: Heavy-duty Type 316 Stainless Steel butt hinge.

LATCH: Slam latch zinc-plated steel with inside lever handle.

COMPLIANCE: NFPA 288, Warnock Hersey label tested and listed by Intertek

OPTIONS: Self-closing mechanism, recessed padlock hasp, mortise prep.

WARRANTY: 5 year

For a complete list of options visit [www.BestAccessDoors.com](http://www.BestAccessDoors.com)

SKU: BA-BFDF-CI

## FIRE-RATED DIAMOND TREAD FLOOR DOOR



## DIMENSIONS AND APPEARANCE

>> CLICK TO VIEW ADDITIONAL DETAILS AND PRICING <<

### FIRE RATED DIAMOND TREAD FLOOR DOOR:

MODEL	WIDTH	X	LENGTH	LOAD	COVER & INSTALL	OPTIONS
BFDF						
	24" – 48" (250 PSF) <sup>1</sup> >48" – 52" (150 PSF) <sup>2</sup>		24" – 60" (250 PSF) 60" – 96" (150 PSF)	P - 250 PSF L - 150 PSF	S - SINGLE DOOR W - ANCHORS PROVIDED L - HANDLE	MC6 - MORTISE LOCK PR - RECESSED PADLOCK HASP 3HR - 3 HOUR RATING <sup>3</sup> BI - BOLT-IN INSTALLATION <sup>4</sup> SC - SELF CLOSING MECHANISM

<sup>1</sup> The load will default to "P" (250 psf) for doors up to and including 48" x 60" (e.g. FDFPA36x36SWL).

<sup>2</sup> The load will default to "L" (150 psf) for doors greater than 48" x 60" (e.g. FDFLA50x75SWL).

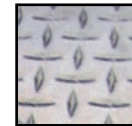
<sup>3</sup> Up to 48" x 60" only and 250 psf only.

<sup>4</sup> 2-hour only.

### MATERIALS:

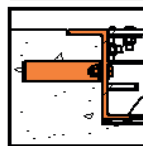


Intertek

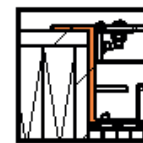


Aluminum

### FRAME:



Angle Frame Cast-In



Angle Frame Both-In

## PROJECT DATA

Custom Sizes Available - Fast!

Scan or Click



To view Pricing and Additional Product Info.

PROJECT NAME :	QTY	W	H	OPTIONS
ARCHITECT :				
DEALER :				
CONTRACTOR :				
LOCATION :	SPECIAL INSTRUCTIONS :			
DATE :	SUBMITTAL APPROVAL : (signature or stamp)			
TAGGING INSTRUCTIONS :				

TELEPHONE:  
1-800-483-0823  
FAX:  
1-888-828-6021



228 PARK AVE. S. #76520  
NEW YORK, NY, 10003



WEBSITE:  
[www.BestAccessDoors.com](http://www.BestAccessDoors.com)

E-MAIL:  
[info@bestaccessdoors.com](mailto:info@bestaccessdoors.com)