



Quality Access Doors- FAST!

SUBMITTAL/TECHNICAL DATA SHEET

SKU: BA-BFDOHA

DRAINABLE LARGE EQUIPMENT HATCH

H20



DESCRIPTION

The H20 load rated large equipment hatch is designed for infrequent, off-street traffic where moisture or liquid flow into the door is a concern. The frame is constructed with a gutter channel for water runoff into a drainage system.

FEATURES

- H20 or HS20 Load
- Diamond Tread Plate
- Exterior Use
- Drainable Frame with Gutter
- Cast-In Installation

SPECIFICATIONS

LOAD: BFDOH - H20, BFDOH - HS20

DOOR: Double Door

MATERIAL: Aluminum: 1/4 inch, mill finish with gray primer on exterior frame.

COVER: Diamond tread plate.

FRAME: Drainable gutter frame with integral 1 inch anchor flange, EPDM gasket and 1-1/2 inch drain coupling.

INSTALLATION: Cast-In.

SPRINGS: Enclosed coil, Type 17-7 Stainless Steel.

HINGE: Heavy-duty Type 316 Stainless Steel.

HOLD OPEN ARM: Type 316 Stainless Steel automatic hold open arm locks cover in open position.

LATCH: Slam latch Type 316 Stainless Steel with inside lever handle, includes removable threaded plug and key

OPTIONS: Padlock Hasps, Finishes, Safety Grates, Safety Nets, Safety Rails, Skirting.

WARRANTY: 5 years

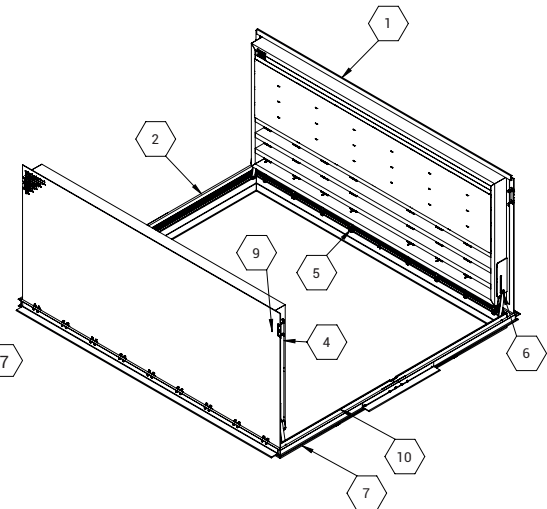
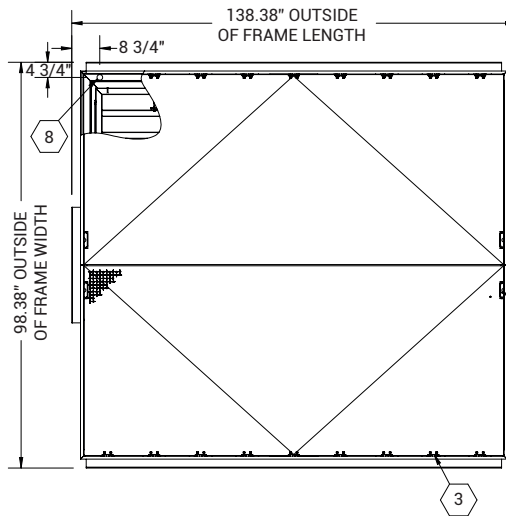
DIMENSIONS AND APPEARANCE

>> CLICK TO VIEW ADDITIONAL DETAILS AND PRICING <<

ORDER GUIDE:

MODEL	WIDTH	X	LENGTH	LOAD	MATERIAL	
BFDO						DFL
	DOUBLE DOOR 48" X 80" TO 48" X 120" 60" X 80" TO 60" X 120" 96" X 80" TO 96" X 120" 108" X 48" TO 108" X 120"			H - H20 S - HS20	A - ALUMINUM	

Additional sizes and options available, call for more information.



For Detailed Specifications See Submittal Sheet

For a complete list of options visit www.BestAccessDoors.com

PROJECT DATA

Custom Sizes Available - Fast!

Scan or Click



To view Pricing and Additional Product Info.

PROJECT NAME :	QTY	W	H	OPTIONS
ARCHITECT :				
DEALER :				
CONTRACTOR :				
LOCATION :	SPECIAL INSTRUCTIONS :			
DATE :	SUBMITTAL APPROVAL : (signature or stamp)			
TAGGING INSTRUCTIONS :				

TELEPHONE:
1-800-483-0823
FAX:
1-888-828-6021



228 PARK AVE. S. #76520
NEW YORK, NY, 10003

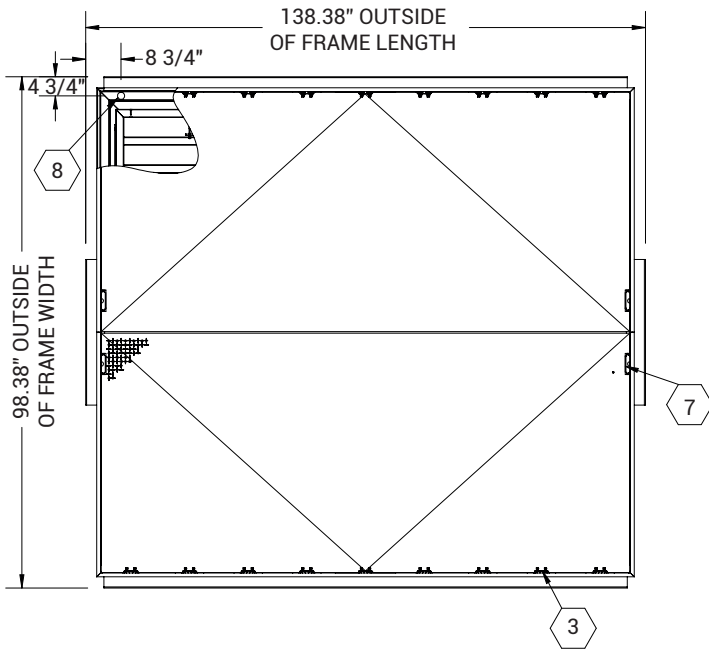


WEBSITE:
www.BestAccessDoors.com

E-MAIL:
info@bestaccessdoors.com

BA-BFDOHA

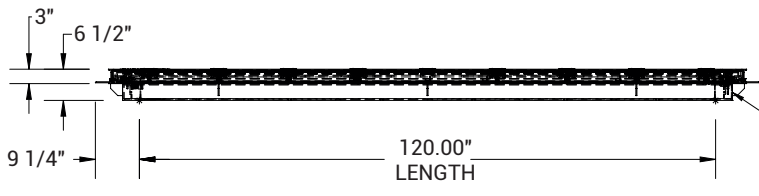
DRAINABLE LARGE EQUIPMENT HATCH - H20



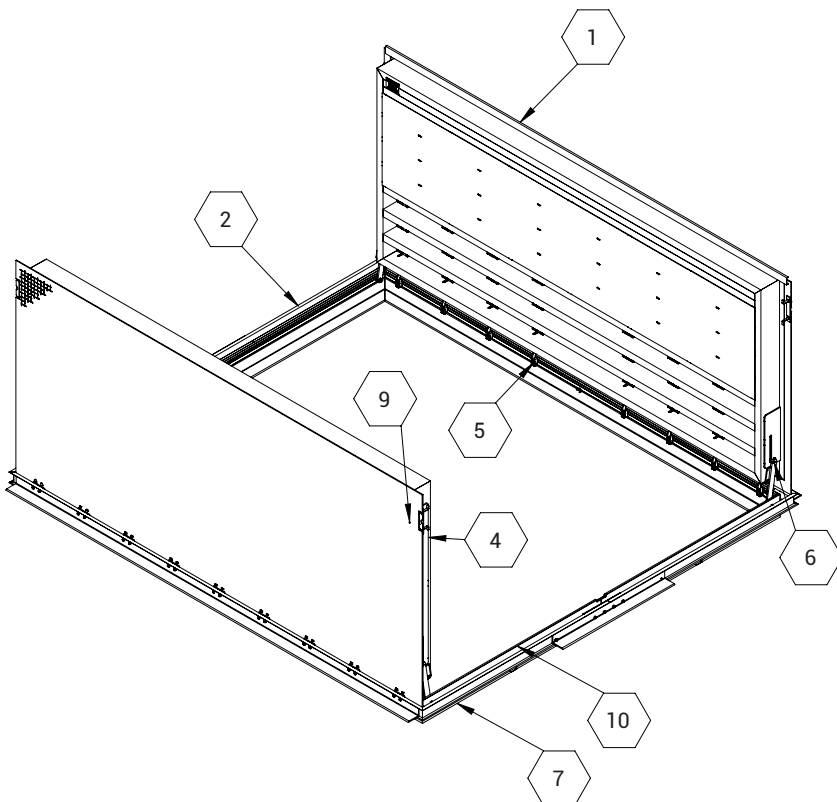
SPECIFICATIONS:

- ① **DOOR:** ALUMINUM, 1/4" DIAMOND PLATE, MILL FINISH WITH A H20 LOAD RATING FOR INFREQUENT LOW SPEED TRAFFIC WITH A MAXIMUM DEFLECTION OF L/150
- ② **FRAME:** ALUMINUM, 1/4" EXTRUSION, GRAY PRIMER FINISH ON EXTERIOR SURFACES THAT COME IN CONTACT WITH CONCRETE
- ③ **HINGES:** TYPE 316 STAINLESS STEEL
- ④ **SLAM LATCH:** TYPE 316 STAINLESS STEEL WITH INSIDE LEVER HANDLE AND OUTSIDE REMOVABLE 5/16" SQUARE L HANDLE
- ⑤ **COUNTER-BALANCE SPRING:** ENCLOSED 17-7 STAINLESS STEEL SPRING
- ⑥ **HOLD-OPEN ARM:** TYPE 316 STAINLESS STEEL
- ⑦ **FLUSH LIFTING HANDLE:** TYPE 316 STAINLESS STEEL
- ⑧ **DRAINAGE COUPLING:** 1-1/2", FOR CONNECTION TO RUN OFF
- ⑨ **FLUSH TYPE PLUG SEAL:** TYPE 316 STAINLESS STEEL
- ⑩ **GASKET:** EPDM

FLOOR DOOR SIZ: 80 (WIDTH) X 120 (LENGTH)

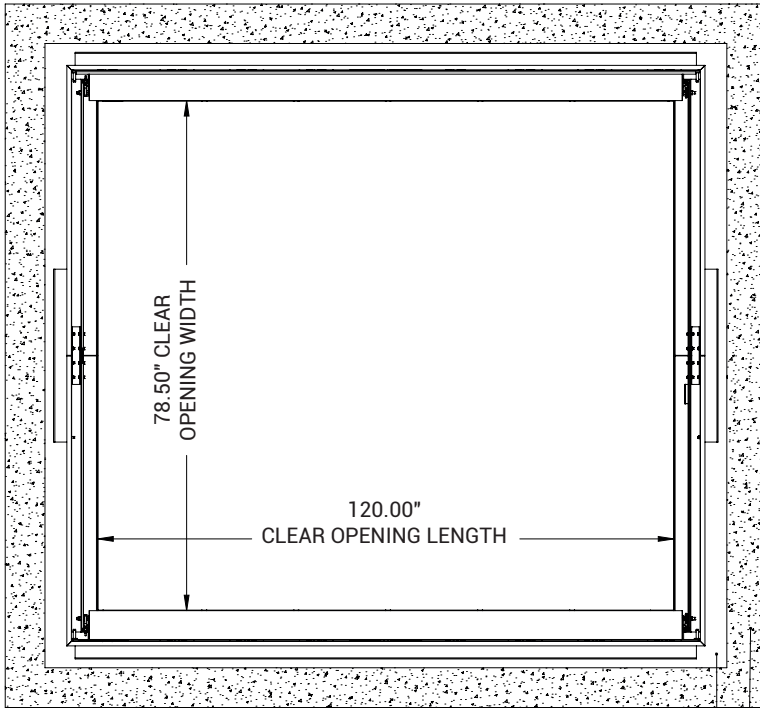


REFERENCE H20 CHANNEL SUPPORT SHELF (SHEET 2)

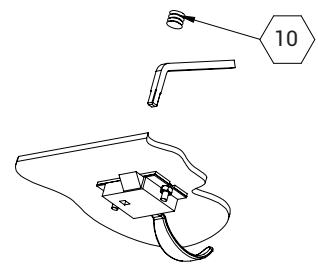
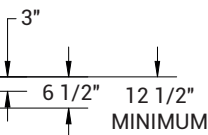
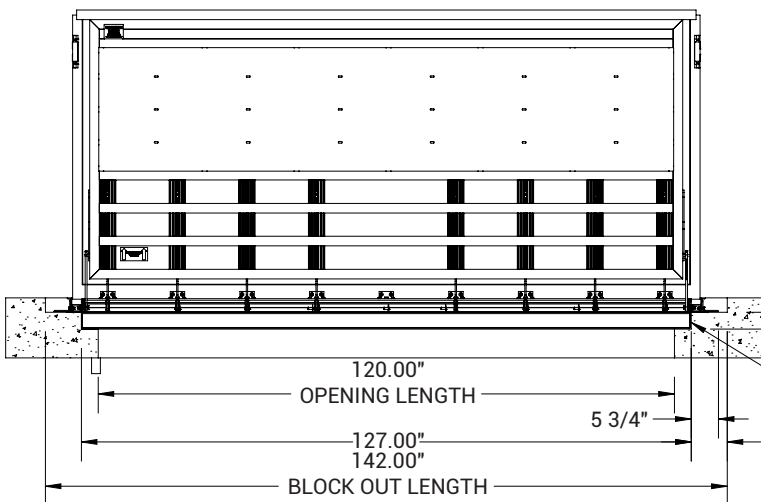
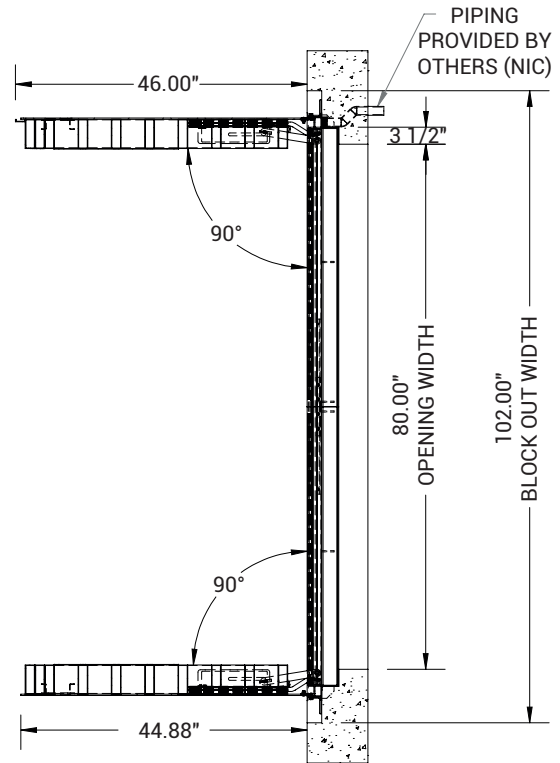


BA-BFDOHA

DRAINABLE LARGE EQUIPMENT HATCH - H20



CONCRETE BACKFILL AREA



SLAM LATCH DETAIL