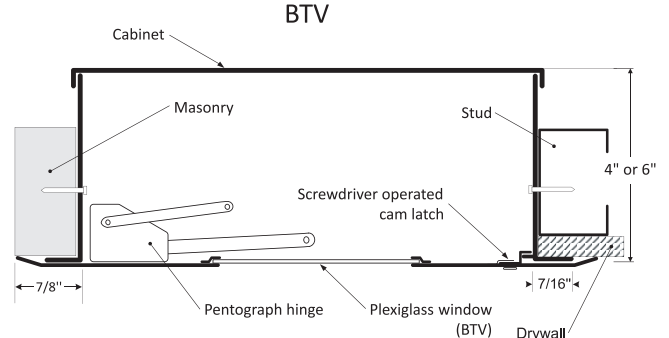
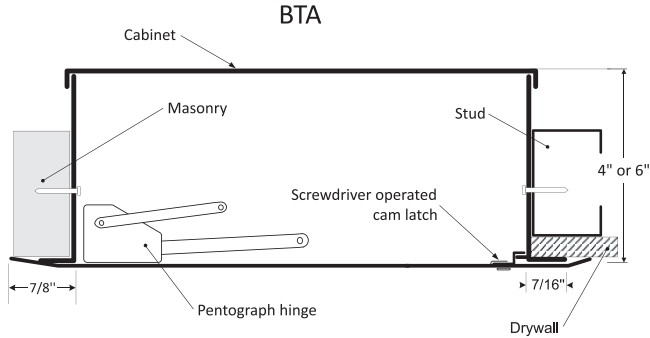
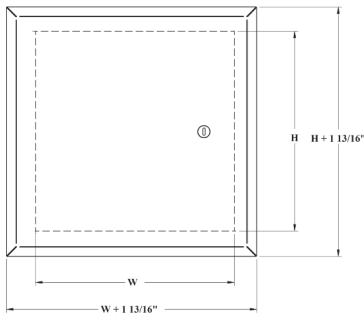


CABINETS / VALVE BOXES
 WITH HIDDEN FLANGE

BTA-BTV
INSTALLATION

DIMENSIONS AND APPEARANCE

LEED ready: This product contributes to LEED® credits.

DOOR SIZE - W x H INCHES (MM)	WINDOW SIZE FOR BTV (approx.)	NUMBER OF LOCKS
8 1/4 x 8 1/4 (209 x 209)	3 x 3 (76 x 76)	1
12 x 12 (304 x 304)	5 x 5 (127 x 127)	1
16 x 16 (406 x 406)	8 x 8 (203 x 203)	1
Rough wall opening = door size + 1/2" or + 12.7mm		


BTA

BTV
DESCRIPTION AND MATERIAL SPECIFICATION

Material: 16 gauge cold rolled steel
Hinge: concealed, exclusive hinge design
Lock / latch: screwdriver operated cam latch
Finish: high quality white powder coat primer
Packaging: individually wrapped, 1 per box
Depth: 4" or 6"

POPULAR OPTIONS For complete list of options go to: www.cendrex.com
Lock / latch: cylinder lock and key, Allen head hex lock
Material: stainless steel 304 #4 (brushed finish)
Window: 1/8" Plexiglass (BTV only)
Style: surface mount cabinet (style AHD)
Depth: various depths available
Unassembled: door frame separate from cabinet

CENDREX PARTNERS

PROJECT DATA

PROJECT NAME:	MODEL	QTY	W	H	OPTIONS
ARCHITECT:					
DEALER:					
CONTRACTOR:					
LOCATION:	SPECIAL INSTRUCTIONS:				
DATE:					
TAGGING INSTRUCTIONS:	SUBMITTAL APPROVAL: (signature or stamp)				

HEAD OFFICE: 11 303, 26th avenue, Montreal, Quebec, Canada H1E 6N6
WAREHOUSES: California, Colorado, Florida, Illinois, Pennsylvania, Texas

Tel.: 514 493-1489 - 1 800 479-1489
Fax: 514 493-1992 - 1 800 297-1489

www.cendrex.com
info@cendrex.com

 Your odd sizes:
 Made in record time