



Quality Access Doors - FAST!

SUBMITTAL/TECHNICAL DATA SHEET

DESCRIPTIONS

The DXW flat roof window ensures you can walk across its surface freely. The frame in flat roof windows is made of multi-chamber PVC profiles partially manufactured from recycled raw material. Inner surface of the frame is white. Material from which the profiles are made features high resistance to acids and very low moisture absorption, therefore the window can be used in any room.

FEATURES

- Providing a surface level with the roof and a special non-slip glass to ensure complete safety when walking across the window
- Enhanced load capacity, operational load of 500kg/m²
- Innovative method of glazing unit installation
- High resistance to break-in attempts thanks to reinforced design
- Reduced heat loss (U_w = 0.70 W/m²K)
- modern design and high quality finish
- quick and easy installation

SPECIFICATIONS

SASH STRUCTURE: Multi-chamber PVC profile

PROFILES FIXING ROOFING: Profiles mechanically fixing roofing to the frame.

OPENING METHOD: Non-opening

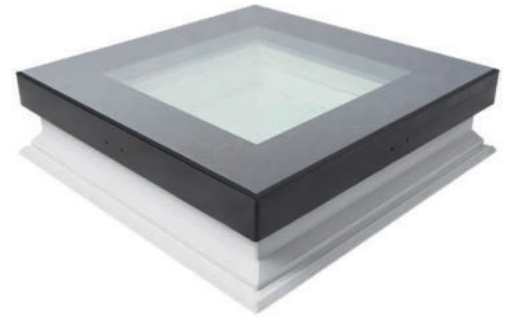
GLAZING UNIT: DW6, highly energy-efficient, toughened outer pane, laminated inner pane (class P2A)

WARRANTY: 10 years for windows

SKU: **BA-DXW**

WALKABLE WINDOW

FOR FLAT ROOF

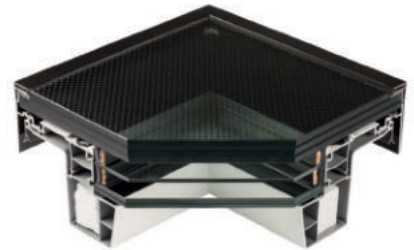


DIMENSIONS AND APPEARANCE

>> [CLICK TO VIEW ADDITIONAL DETAILS AND PRICING <<](#)

TECHNICAL PARAMETERS:

| | | |
|--------------------------------|-----------------------|--------------------------------|
| Wind load resistance | Class C5/B5 | as per EN 14351-1:2006+A1:2010 |
| Snow load resistance | 888.44H-16-4H-18-66.2 | |
| Fire resistance | Class F | |
| External fire resistance | nqd | |
| Impact resistance | Class 5-950mm | |
| Air permeability | Class 4 | |
| Watertightness. Unshielded (A) | E1200 | |
| Glazing units | DW6 | |



OPTIONS:

| | |
|--|---|
| | - Non-standard size and shape of the window [cm] in the range from 60x60cm to 120x120cm |
|--|---|

ADDITIONAL PRODUCTS TO BE USED:

| | |
|----------------------|--|
| Mounting accessories | - The XRD/W installation base allows raising the access roof light above the roof by 15cm. Maximum three bases XRD/W can be joined |
| External accessories | - |
| Internal accessories | - ARF/D, ARF/D Z-Wave blackout blinds, - APF/D pleated blinds |



For more details see the second page

For a complete list of options visit www.BestAccessDoors.com

PROJECT DATA

Custom Sizes Available - Fast!

Scan or Click



To view Pricing and Additional Product Info.

| | | | | |
|------------------------|--|---|---|---------|
| PROJECT NAME : | QTY | W | H | OPTIONS |
| ARCHITECT : | | | | |
| DEALER : | | | | |
| CONTRACTOR : | | | | |
| LOCATION : | SPECIAL INSTRUCTIONS : | | | |
| DATE : | | | | |
| TAGGING INSTRUCTIONS : | SUBMITTAL APPROVAL : (signature or stamp) | | | |

TELEPHONE:
1-800-483-0823
FAX:
1-888-828-6021



228 PARK AVE. S. #76520
NEW YORK, NY, 10003











WEBSITE:
www.BestAccessDoors.com
E-MAIL:
info@bestaccessdoors.com

BA-DXW

WALKABLE WINDOW FOR FLAT ROOF

TECHNICAL PARAMETERS FOR WINDOWS IN PARTICULAR SIZES:

| Size |  |  |  |  |  |  |  |  |
|-----------------------------|---|---|---|---|--|---|---|---|
| Commercial size (cm) | 60 x 60 | 60 x 90 | 70 x 70 | 80 x 80 | 90 x 90 | 90 x 120 | 100 x 100 | 120 x 120 |
| Window size symbol | 01K | 02K | 03K | 04K | 05K | 06K | 07K | 08K |
| Window internal area [m2] | 0.27 | 0.42 | 0.38 | 0.51 | 0.67 | 0.91 | 0.84 | 1.25 |
| Effective glazing area [m2] | 0.23 | 0.37 | 0.33 | 0.46 | 0.60 | 0.83 | 0.77 | 1.16 |
| DXW DW6 window weight [kg] | 72 | 97 | 90 | 110 | 132 | 167 | 157 | 212 |

TECHNICAL PARAMETERS FOR WINDOWS WITH PARTICULAR GLAZING UNIT TYPES:

| Technical parameters | Glazing unit type |
|---|--------------------------|
| | DU6 |
| Glazing structure | 888.44-16-4HT-18-66.2T |
| Glazing U-value as per 673 | 0.5W/m ² K |
| Window U-value as per EN 14351-1:2006+A2:2016 | 0.7W/m ² K |
| Acoustic insulation Rw as per EN 14351-1:2006+A2:2016 | npd |
| Light transmittance factor t _v as per EN 1279-5+A2:2010 | npd |
| Solar factor g as per EN 1279-5+A2:2010 | 0.35 |
| Frame thermal insulation U _f as per EN 14351-1:2006+A2:2016 | 0.67 W/m ² K |
| Thermal insulation of frame and glazing connection Ψ as per EN 14351-1:2006+A2:2016 | 0.055 W/m ² K |

