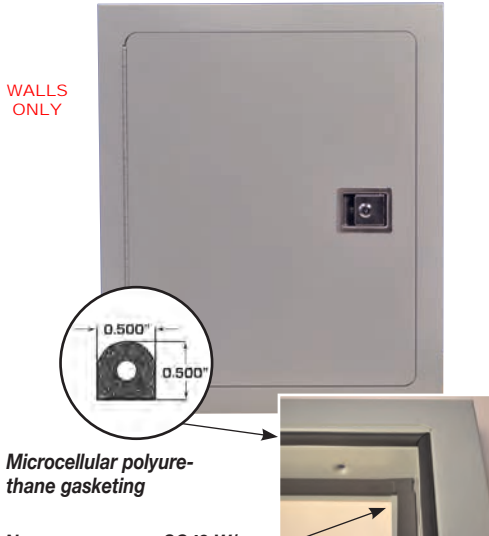


DETAIL & SUBMITTAL SHEET

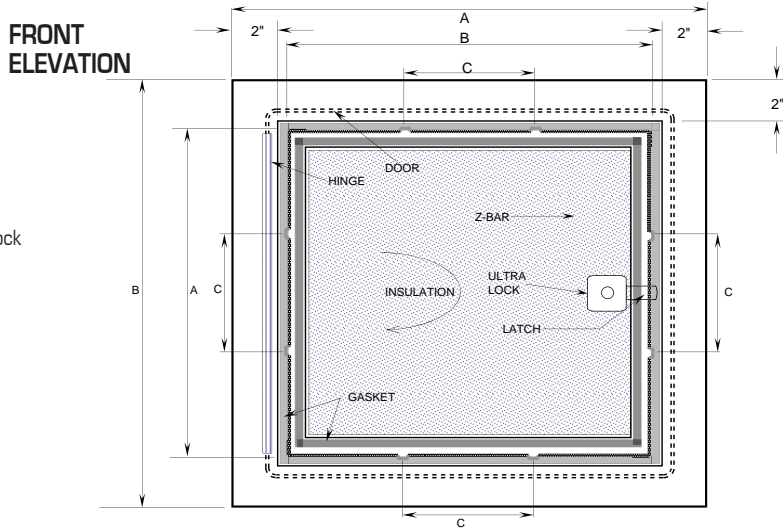


WALLS ONLY

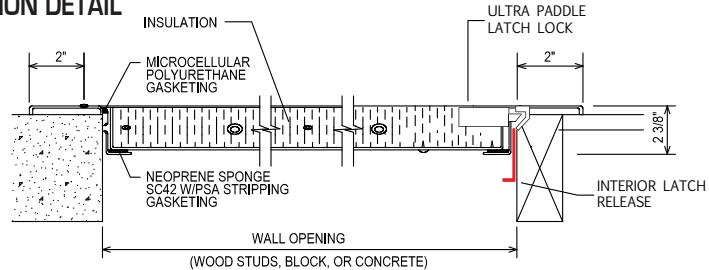
Microcellular polyurethane gasketing

Neoprene sponge SC42 W/ PSA stripping gasketing applied on back inside edge

Ultra lock option



SECTION DETAIL



SPECIFICATIONS:

Door: 16 ga. steel. Trim 1 1/2" wide

Frame: 16 ga. steel, 2 3/8" depth

Gasketing: Open celled microcellular polyurethane on inside of door and closed cell neoprene sponge SC42 W/PSA stripping gasketing on the back of the door

Insulation: Double layer of 1" GreenGuard® Extruded Polystyrene insulation board, with R-Value @ 75°F Mean 5.0 x 2, FM approved*

Hinges: Continuous piano hinge. Allows opening to 180°.

Latches: Ultra paddle latch lock and slam catch with 151 keycode, and interior latch release

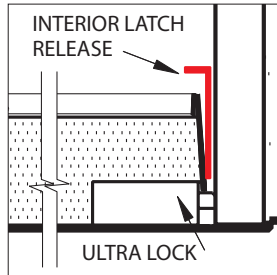
Finish: Zinc dipped baked grey enamel

Application: For exterior purposes, weather resistive

OPTIONS (at additional cost)

Special sizes available

Ultra Paddle Latch lock



Item No.	Door Size W x H	Wall Opening *	Ship Wt. Lbs.
BA-EXT 1350	12 x 12	12 1/4 x 12 1/4	27
BA-EXT 1350	14 x 14	14 1/4 x 14 1/4	30
BA-EXT 1350	16 x 16	16 1/4 x 16 1/4	35
BA-EXT 1350	18 x 18	18 1/4 x 18 1/4	40
BA-EXT 1350	22 x 30	22 1/4 x 30 1/4	45
BA-EXT 1350	22 x 36	22 1/4 x 36 1/4	50
BA-EXT 1350	24 x 24	24 1/4 x 24 1/4	55
BA-EXT 1350	24 x 36	24 1/4 x 36 1/4	67
BA-EXT 1350	30 x 36	30 1/4 x 36 1/4	79
BA-EXT 1350	36 x 36	36 1/4 x 36 1/4	90

* For wall opening sizes see elevation drawing above.

[Click here to view the Products](#)

The one of a kind exterior access door is zinc dipped, insulated with 1" GreenGuard and includes two types of gasketing. Weather resistive open celled microcellular polyurethane gasketing and closed cell neoprene sponge SC42 W/PSA stripping gasketing on inside for outdoor applications (certain saltwater areas might not be compatible).

* GreenGuard® Extruded Polystyrene insulation board, with R-Value @ 75°F Mean 5.0 x 2. R means resistance to heat flow. The higher the R-Value the greater the insulating power and energy saving capability. Compliance: BOCA 90-78, SBCCI 2228A, ICBO 4280, CA BHF TB 1334, MN Dept. of Energy Chapter 7640, CCMC 12722-L, Und. Lab. Inc.® See Classification Certificate A183. FM Approved.

BestAccessDoors

Email: sales@bestaccessdoors.com

Website: www.BestAccessDoors.com

Phone: 1-800-483-0823

427 N Tatnall St, #76520 Wilmington, DE 19801-2230

Fax: 1-888-828-6021

