



Quality Access Doors - FAST !



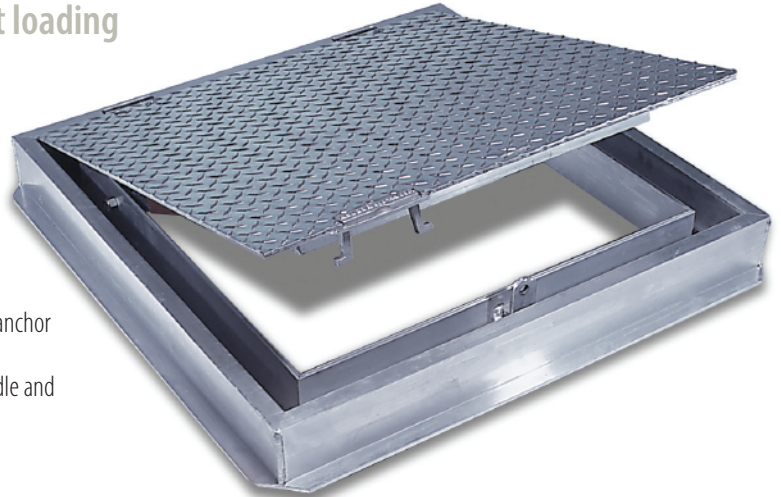
Floor Door channel Frame, 300 lbs./sqft loading BA-FC-300

Application

- Designed for interior and exterior applications where watertightness is required

Product Features

- Channel frame construction with 1 1/2" drainage coupling and integral anchor flange is designed to be cast into concrete
- Diamond plate door panel is equipped with a flush aluminum drop handle and an automatic hold open arm



BA-FC-300 Floor Door Specifications:

Material: Aluminum door and frame; stainless steel hinges and hardware

Door: 1/4" aluminum diamond plate reinforced for live load of 300 pounds/sq. ft.

Frame: Angle frame fabricated from aluminum extrusion with an integral 1" anchor flange

Hinge: Stainless steel butt hinges with tamperproof stainless steel bolts and nuts

Opening Device: Automatic hold open arm with red vinyl grip allows door panel to open to 90 degrees, locking door in open position, and allowing for easy control when closing door panel. When required, stainless steel compression springs can be provided to add lift assistance.

Standard Latch: Flush aluminum drop handle with staple for padlock. Also available: Recessed padlock provision: st/stl Slamlock

Finish: Mill finish, with optional bituminous coating on exterior of frame

[Click here to view the Products](#)

AVAILABLE SIZES (Special sizes available upon request)

NOMINAL DOOR SIZE W X H		WEIGHT PER DOOR	
inches	mm	lbs.	kg.
24 X 24	610 X 610	60	27.2
24 X 30	610 X 762	70	31.8
24 X 36	610 X 914	75	34
30 X 30	762 X 762	80	36.4
30 X 36	762 X 914	90	41
36 X 36	914 X 914	100	45.4
36 X 48	914 X 1220	120	54.5
42 X 42	1067 X 1067	125	56.8
48 X 48*	1220 X 1220	155	70.4
48 X 72*	1220 X 1829	210	95.3
60 X 60*	1524 X 1524	220	98.9

*Double Leaf

For detailed specifications see submittal sheet

