



Quality Access Doors- **FAST!**

# SUBMITTAL/TECHNICAL DATA SHEET

## DESCRIPTION

The Largest Fire-Rated Two Hour Ceiling Door Available With Double Doors and Removable Center Mullion. Double Leaf Allows Greater Accessibility and reduces the swing radius and clears objects which interfere with the opening of the door.

## SPECIFICATION

**MATERIALS:** Satin finish galvanized steel or 304 stainless steel

**FRAME:** 16 ga., up to and including 30" x 48". Larger sizes are 14 ga. Removable center mullion. Frame Depth "D" = 2 1/4" (57 mm).

**FLANGE:** 7/8" (22 mm) up to and including 36" x 36". Larger sizes are 1-1/4" (32mm).

**DOOR PANEL:** 18 ga. panel with 22 ga liner.

**INSULATION:** The door panel contains 1 1/2" of high temperature insulation material.

**FINISHES:** Rust-inhibitive off-white prime coat or # 4 polished stainless steel finish on exterior surface.

**HINGES:** Concealed continuous rod hinge. 48" or longer in wall position will be a continuous piano hinge. Stainless models have a stainless steel continuous piano hinge. Hinge is the (H) dimension.

**PANEL CLOSER:** The automatic panel closer will close & latch the door from an open position of approximately 90° as required by NFPA 80.

**LATCH:** The standard factory installed latch is a flush mount 1/4" allen key. All fire-rated locks are self-latching and include an interior latch release mechanism allowing the doors to be opened from the inside.

### SIZES:

Minimum size 18" x 12"  
Maximum size for walls is 48" x 60"  
Maximum for ceilings is 60" x 48"

### LATCH AND LOCK OPTIONS

Standard (A) 1/4" Allen Key	Optional Knurled Knob (KK)	Optional Mortise Lock (MPI)

SKU: **BA-FD2D**

## FIRE-RATED ACCESS PANEL-DOUBLE DOOR

FOR WALLS AND CEILINGS



## DIMENSIONS AND APPEARANCE

>> CLICK TO VIEW ADDITIONAL DETAILS AND PRICING <<

Rough Opening is Order Size W x H (H=Hinge Side)		No. of Latches/ Locks	Approx Weight Kgs	Approximate Weight Lbs.
Inches	Metric(mm)			
24 x 24	610 x 610	2	25	35
36 x 36	914 x 1219	2	39	85
40 x 40	1016 x 1016	2	38	84
40 x 48	1016 x 1219	4	43	94
48 x 36	1219 x 914	2	36	79
48 x 40	1219 x 1016	4	49	107
48 x 48	1219 x 1219	4	35	78
60 x 24	1524 x 610	2	41	90
60 x 30	1524 x 762	2	48	105
60 x 36	1524 x 914	4	42	93
60 x 40	1524 x 1016	4	52	114
60 x 48	1524 x 1219	4	61	135

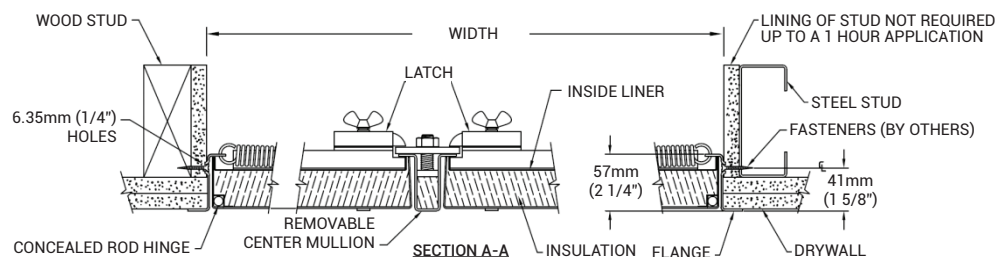
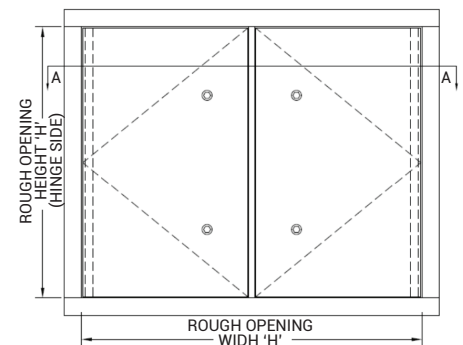
Net Opening = Width minus 6" (153mm)  
Height minus 1-1/2" (39 mm)

Other sizes available upon request for all Models.  
Second dimension given is the hinge side (shown in **Bold**)  
unless otherwise specified

Note:

Some Lock Options are not included in standard pricing.

Additional Sizes				
Rough Opening is Order Size W x H (H=Hinge Side)		No. of Latches/ Locks	Approx Weight Kgs	Approximate Weight Lbs.
Inches	Metric(mm)			
24 x 60	610 x 1524	4	34	74
36 x 60	914 x 1524	4	51	111
40 x 60	1016 x 1524	4	54	120
48 x 60	1219 x 1524	4	64	140



For a complete list of options visit  
[www.BestAccessDoors.com](http://www.BestAccessDoors.com)

## PROJECT DATA

Custom Sizes Available - Fast!

PROJECT NAME :	QTY	W	H	OPTIONS
ARCHITECT :				
DEALER :				
CONTRACTOR :				
LOCATION :	SPECIAL INSTRUCTIONS :			
DATE :				
TAGGING INSTRUCTIONS :	SUBMITTAL APPROVAL : (signature or stamp)			

Scan or



To view Pricing and  
Additional Product Info.

TELEPHONE:  
1-800-483-0823  
FAX:  
1-888-828-6021



228 PARK AVE. S. #76520  
NEW YORK, NY, 10003



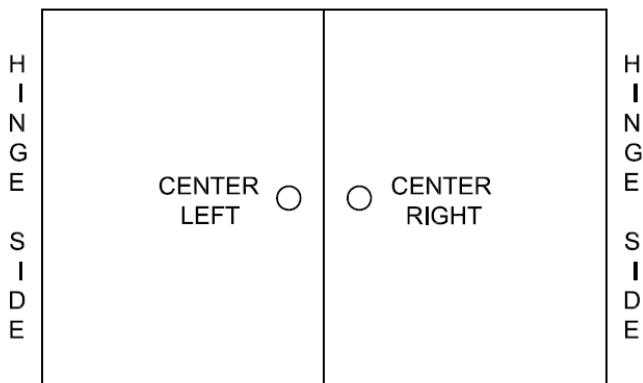
WEBSITE:  
[www.BestAccessDoors.com](http://www.BestAccessDoors.com)  
E-MAIL:  
[info@bestaccessdoors.com](mailto:info@bestaccessdoors.com)

# BA-FD2D

## 2 HOUR FIRE-RATED ACCESS PANEL - DOUBLE DOOR

SELECT LATCH AND LOCKS BELOW OR ON PAGE 3 :

TWO LATCHES

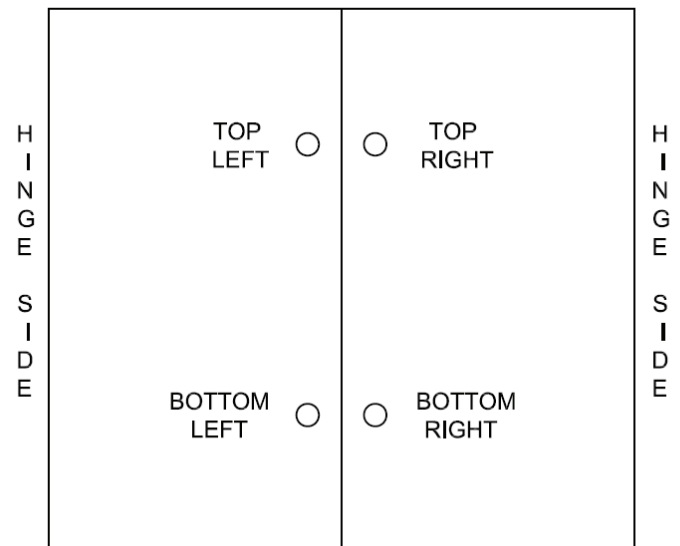


Center Left	Latch and Lock Option For Centered Latches	Center Right
<input type="checkbox"/>	1/4" Allen Key	<input type="checkbox"/>
<input type="checkbox"/>	Raised Knurled Knob	<input type="checkbox"/>
<input type="checkbox"/>	1-1/8" Mortise Prep*	<input type="checkbox"/>
<input type="checkbox"/>	1-1/8" Mortise Prep with Cylinder*	<input type="checkbox"/>

☐ Concealed Operator One Side Only - Select Operator for Other Side from Above Options

\* Lock Option at Additional Cost

FOUR LATCHES



Top Left	Latch and Lock Options For 4 Latches	Top Right
<input type="checkbox"/>	1/4" Allen Key	<input type="checkbox"/>
<input type="checkbox"/>	Raised Knurled Knob	<input type="checkbox"/>
<input type="checkbox"/>	1-1/8" Mortise Prep*	<input type="checkbox"/>
<input type="checkbox"/>	1-1/8" Mortise Prep with Cylinder*	<input type="checkbox"/>
Bottom Left		Bottom Right
<input type="checkbox"/>	1/4" Allen Key	<input type="checkbox"/>
<input type="checkbox"/>	Raised Knurled Knob	<input type="checkbox"/>
<input type="checkbox"/>	1-1/8" Mortise Prep*	<input type="checkbox"/>
<input type="checkbox"/>	1-1/8" Mortise Prep with Cylinder*	<input type="checkbox"/>

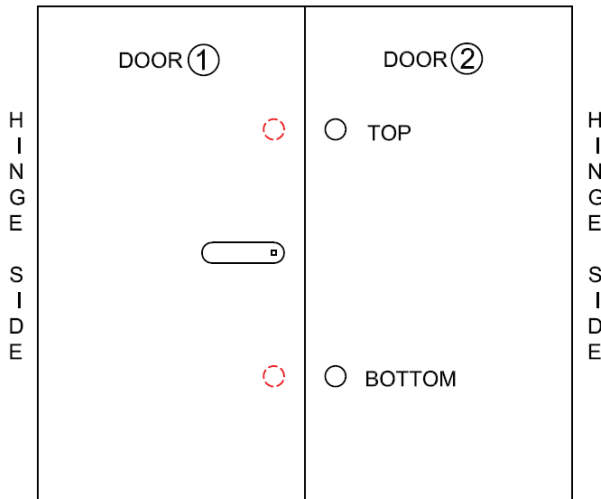
☐ Concealed Operator One Side Only - Select Operator for Other Side from Above Options  
Example: If Concealed Operator is on Left Door, Select Top Right and Bottom Right Latch/Lock Options

# BA-FD2D

## 2 HOUR FIRE-RATED ACCESS PANEL - DOUBLE DOOR

SELECT LATCH AND LOCKS BELOW OR ON PAGE 2 :

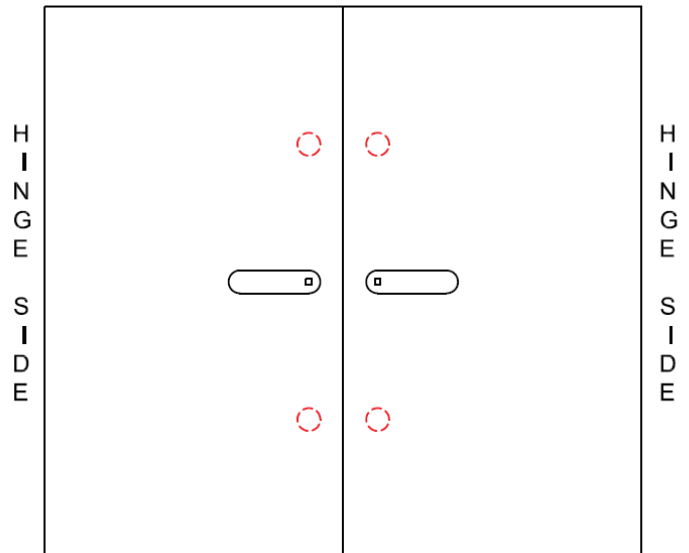
ONE CENTRAL POINT HANDLE - FOUR LATCHES



DOOR 1: Central Point Handle Controls  
Two Concealed Latches on Door (shown in Bold)  
DOOR 2: Latch and Lock Options:

Latch and Lock Option	Top Right
Raised Knurled Knob	<input type="checkbox"/>
1-1/8" Mortise Prep*	<input type="checkbox"/>
1-1/8" Mortise Prep with Cylinder*	<input type="checkbox"/>
Latch and Lock Option	Bottom Right
Raised Knurled Knob	<input type="checkbox"/>
1-1/8" Mortise Prep*	<input type="checkbox"/>
1-1/8" Mortise Prep with Cylinder*	<input type="checkbox"/>

TWO CENTRAL POINT HANDLES - FOUR LATCHES



☐ Central Point Handle Controls on Both Doors  
Two Concealed Latches on Each Door

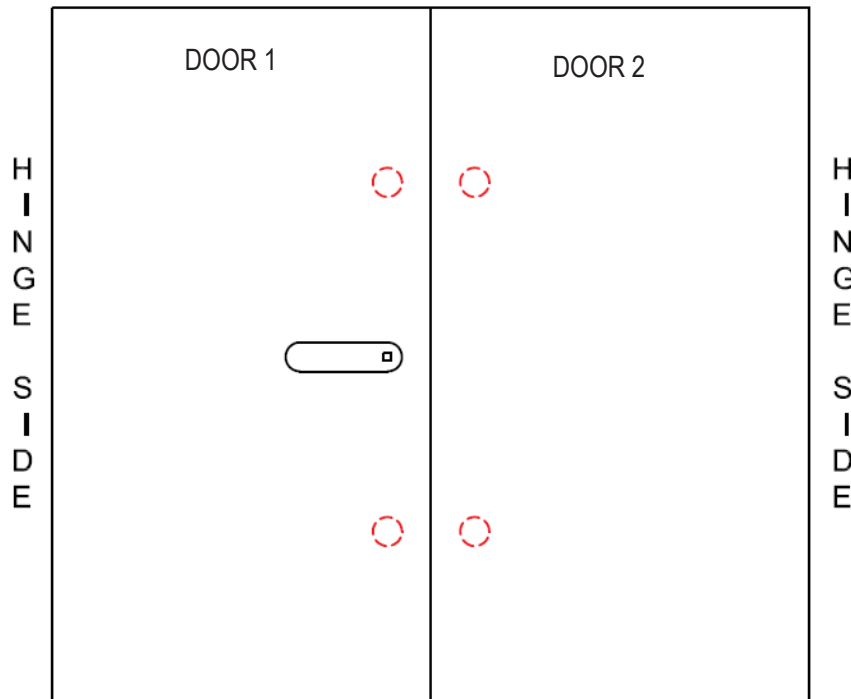
\* Lock Option at Additional Cost



# BA-FD2D

## 2 HOUR FIRE-RATED ACCESS PANEL - DOUBLE DOOR

### ONE CENTRAL POINT HANDLE - FOUR LATCHES



#### DOOR 1

Central Point Handle Controls Two Concealed Latches on Door.

#### DOOR 2

Two Concealed Latches on Door, Operable from the Inside Only.