

# Aluminum panel round

Architectural access door with concealed frame and drywall inlay - System R

Alu round



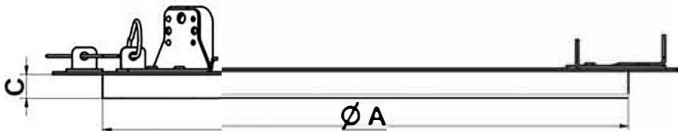
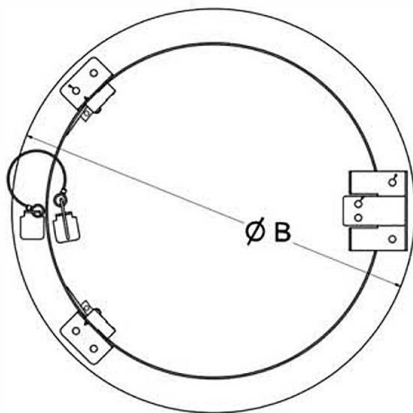
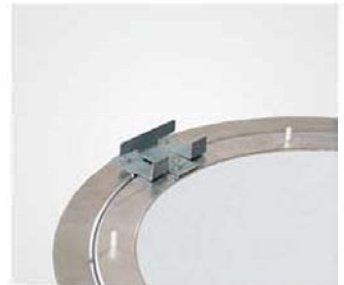
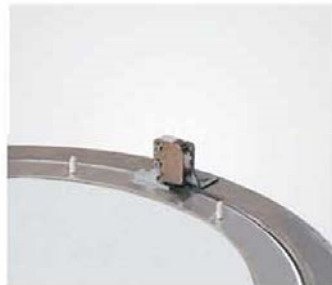
## Description

The Access panel consists of an aluminum frame which virtually disappears once installed in the wall.

Equipped with concealed mechanical touch-latches, the round access door is available with either 1/2" (12.7 mm) or 5/8" (15.9 mm) drywall and blends seamlessly into the surrounding wall or ceiling and just a small reveal of 1/16" (1.59 mm) is visible between the outer frame and door hatch.

The door is fully removable and offers a very functional yet aesthetically pleasing solution.

[Click here to view the Products](#)



System R	Dimensions	
Code	A inch   mm	B inch   mm
R200G127	8"   203	10"   260
R300G127	12"   305	14"   360
R400G127	16"   406	18"   457
R500G127	20"   508	22"   560
R600G127	24"   610	26"   660

All standard sizes are available in 1/2" (12.7 mm) or 5/8" (15.9 mm) drywall.

## Options

- SD** Screwdriver operated cam latch
- FS** Screwdriver operated four-square cam latch
- Z** Round Cylinder Lock with Key
- M** Mortise Cylinder Lock Preparation
- H** Hex Head Cam Latch
- P** Pinned Hex Head Cam Latch

### Advantages of BestAccessDoors Panels

- Superior engineering & innovative design
- Quick and easy installation
- Solid aluminum frame
- For installation in ceilings and walls



**Best Access Doors**