



Quality Access Doors- FAST!

SUBMITTAL/TECHNICAL DATA SHEET

Door and Frame are fabricated from 18 gauge, galvanized steel with a white prime coat finish. Door and frame are designed to form a tight seal reducing air infiltration by placing gaskets on all three sides of the door stop and gasketing the space between the door and frame.

Gasket material consists of 1/8" x 3/8" oil-resistant, fire-retardant blended Buna-N Foam.

Frame is four piece construction, 1" wide and provides perfect concealment of the rough wall opening. Wall frame is provided with 1/4" mounting holes for fastening within the furred spaces allowing faster installation and fixing maximum clearance.

Concealed Pivoting Rod Hinge prevents distortion and closes door squarely.

Latch is screwdriver operated.

Finish is a white prime coat.

GUIDE SPECIFICATION

Gasketed Access Doors. Access door and frame shall be fabricated from 18 gauge, galvanized steel with a white prime coat finish. The door shall have rounded safety corners and a concealed pivoting rod hinge. Frame shall be one piece construction with no mitres or welds on the face. Door and frame shall have a tight seal reducing air infiltration by placing gaskets on all three sides of the door stop and gasketing the space between the door and frame. Latch shall be screwdriver operated.

MODEL NUMBER AND OPTIONS SELECTION

BASE MODEL NUMBER

- GD Gasketed Access Door (18 Gauge Steel)

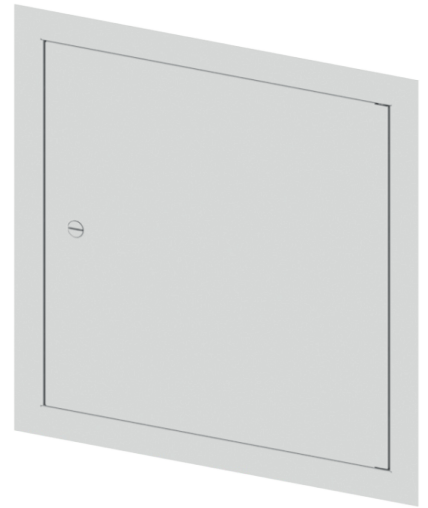
SUFFIX OPTIONS

- AKL Allen Key Latch
- CL Cylinder Lock (one per door)
- CLD Cylinder Lock with Dust Shutter (one per door)
- SS Stainless Steel Construction (Type 304 No. 4 Satin Finish)

For a complete list of options visit www.BestAccessDoors.com

SKU: **BA-GD**

GASKETED ACCESS DOORS

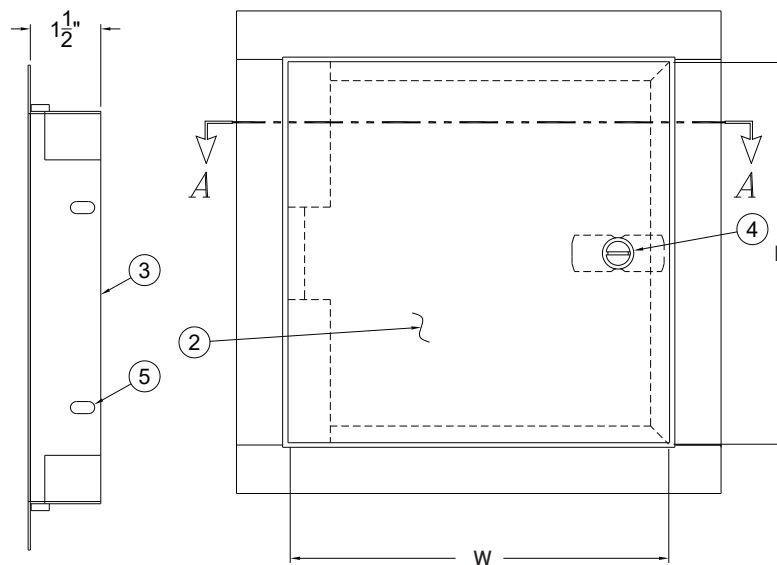
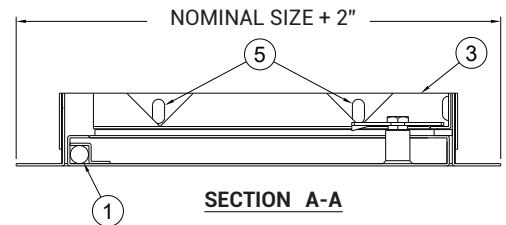


DIMENSIONS AND APPEARANCE

>> [CLICK TO VIEW ADDITIONAL DETAILS AND PRICING <<](#)

STANDARD SIZES:

NOMINAL DOOR SIZE (W x H)	WALL OPENING (minimum required)	LOCK QTY	WEIGHT LBS
GD 8" x 8"	8-1/2" x 8-1/2"	1	3.5 LBS.
GD 12" x 12"	12-1/2" x 12-1/2"	1	6.0 LBS.
GD 16" x 16"	16-1/2" x 16-1/2"	2	9.0 LBS.
GD 18" x 18"	18-1/2" x 18-1/2"	2	10.5 LBS.
GD 24" x 24"	24-1/2" x 24-1/2"	2	16.0 LBS.
GD 24" x 36"	24-1/2" x 36-1/2"	2	22.0 LBS.



NOTES:

1. CONCEALED PIVOTING ROD HINGE
2. DOOR
3. FRAME
4. SCREWDRIVER OPERATED LATCH
5. MOUNTING HOLES

PROJECT DATA

Custom Sizes Available - Fast!

Scan or Click



To view Pricing and Additional Product Info.

PROJECT NAME :	QTY	W	H	OPTIONS
ARCHITECT :				
DEALER :				
CONTRACTOR :				
LOCATION :	SPECIAL INSTRUCTIONS :			
DATE :	SUBMITTAL APPROVAL : (signature or stamp)			
TAGGING INSTRUCTIONS :				

TELEPHONE:
1-800-483-0823
FAX:
1-888-828-6021



228 PARK AVE. S. #76520
NEW YORK, NY, 10003



WEBSITE:
www.BestAccessDoors.com
E-MAIL:
info@bestaccessdoors.com