



Quality Access Doors - FAST!

# SUBMITTAL/TECHNICAL DATA SHEET

## APPLICATION

Glass fiber reinforced cement, ceiling access doors are designed to blend seamlessly into exterior soffits or ceilings. The hinged feature allows this door to be installed in walls

## FEATURES

- Portland Cement, Fiber, Post Consumer Recycled Glass
- European Angle Hinges
- Tapered edge for joint tape
- Easily textured
- Lightweight
- No cracking or shrinkage
- Mold and moisture resistant

## SPECIFICATIONS

- Shell Thickness = .125" - .375"
- Fastener Test Pull Out (wood stud) = 525 lb. avg.
- Fastener Test Pull Out (metal stud) = 525 lb. avg.
- Fastener Push Through Test = 350 lb. avg.
- Fuel Contribution (ASTM-E84-80) = 0
- Flame Spread (ASTM-E84-80) = 0
- Smoke Index (ASTM-E84-80) = 0
- Combustion (ASTM-E84-80) = 0



SKU: **BA-GFRC-RH**

## GLASS FIBER REINFORCED CEMENT RADIUS CORNER

HINGED - FOR EXTERIOR CEILINGS



## DIMENSIONS AND APPEARANCE

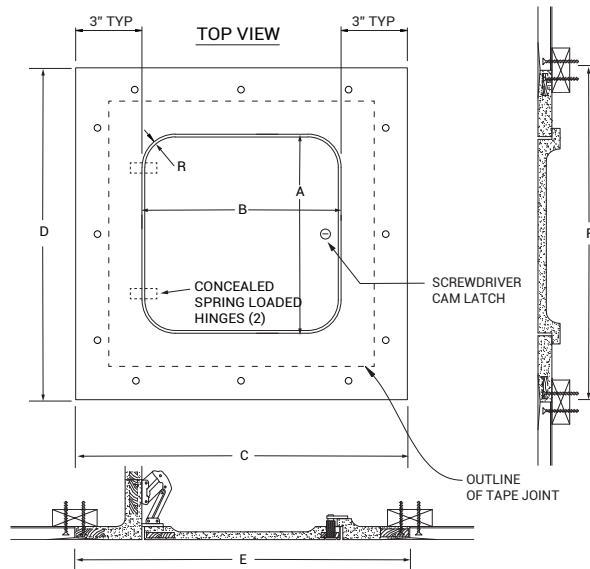
>> CLICK TO VIEW ADDITIONAL DETAILS AND PRICING <<

### STANDARD SIZES:

DOOR SIZE W x H INCHES (MM)	CEILING OPENING INCHES (MM)	WEIGHT	
		LBS	KG
9 x 9 (229 x 229)	15 x 15 (381 x 381)	6.00	2.73
12 x 12 (305 x 305)	18 x 18 (457 x 457)	9.00	4.09
16 x 16 (406 x 406)	22 x 22 (559 x 559)	10.0	4.53
18 x 18 (457 x 457)	24 x 24 (610 x 610)	11.0	5.00
24 x 24 (610 x 610)	30 x 30 (762 x 762)	16.0	7.27

For detailed specifications see submittal sheet

MANUFACTURED BY ACUDOR



For a complete list of options visit [www.BestAccessDoors.com](http://www.BestAccessDoors.com)

## PROJECT DATA

Custom Sizes Available - Fast!

Scan or Click



To view Pricing and Additional Product Info.

PROJECT NAME :	QTY	W	H	OPTIONS
ARCHITECT :				
DEALER :				
CONTRACTOR :				
LOCATION :	SPECIAL INSTRUCTIONS :			
DATE :				
TAGGING INSTRUCTIONS :	SUBMITTAL APPROVAL : (signature or stamp)			

<p>TELEPHONE: 1-800-483-0823</p> <p>FAX: 1-888-828-6021</p>		<p>228 PARK AVE. S. #76520 NEW YORK, NY, 10003</p>	<p>WEBSITE: <a href="http://www.BestAccessDoors.com">www.BestAccessDoors.com</a></p> <p>E-MAIL: <a href="mailto:info@bestaccessdoors.com">info@bestaccessdoors.com</a></p>
---	--	--	--

**BA-GFRC-RH**

**RADIUS CORNER HINGED ACCESS PANEL**

NOMINAL DOOR SIZE	A	B	C	D	E	F	R
Inches (mm)							
9" x 9" (229 x 229)	9.00" (299)	9.00" (299)	15.00" (381)	15.00" (381)	15.00" (381)	15.00" (381)	1.50"
12" x 12" (305 x 305)	12.00" (305)	12.00" (305)	18.00" (457)	18.00" (457)	18.00" (457)	18.00" (457)	1.75"
16" x 16" (406 x 406)	16.00" (406)	16.00" (406)	22.00" (559)	22.00" (559)	22.00" (559)	22.00" (559)	3.00"
18" x 18" (457 x 457)	18.00" (457)	18.00" (457)	24.00" (610)	24.00" (610)	24.00" (610)	24.00" (610)	3.00"
24" x 24" (610 x 610)	24.00" (610)	24.00" (610)	30.00" (762)	30.00" (762)	30.00" (762)	30.00" (762)	3.00"
30" x 22" (762 x 559)	30.00" (762)	22.00" (559)	28.00" (711)	36.00" (914)	28.00" (711)	36.00" (914)	3.00"
30" x 30" (762 x 762)	30.00" (762)	30.00" (762)	36.00" (914)	36.00" (914)	36.00" (914)	36.00" (914)	3.00"

