



Quality Access Doors - FAST!

# SUBMITTAL/TECHNICAL DATA SHEET

## SPECIFICATIONS

01. Thermally broken curb with integral capflashing 11 ga. Aluminum (Corners fully welded)
02. Extruded aluminum cover frame
03. Double dome with sealant all around (Clear Polycarbonate over clear polycarbonate) 4.3" [75mm] polyisocyanurate curb insulation
05. Condensate channel with drainage to exterior
06. EPDM gasket (All around cover)
07. Pintle hinge - Stainless steel type 316
08. Bilclip® flashing system
09. Slam latch with inside and Outside handles with padlock hasps
10. Lock strike and padlock hasp
11. Lifting mechanism with reinforced composite tubes and compression springs
12. Automatic hold open arm with red vinyl grip and cover release
13. Arm guide bracket

### SHOP FINISH

ALUMINIUM: Mill finish  
HARDWARE: Corrosion resistant  
(Unless otherwise specified)

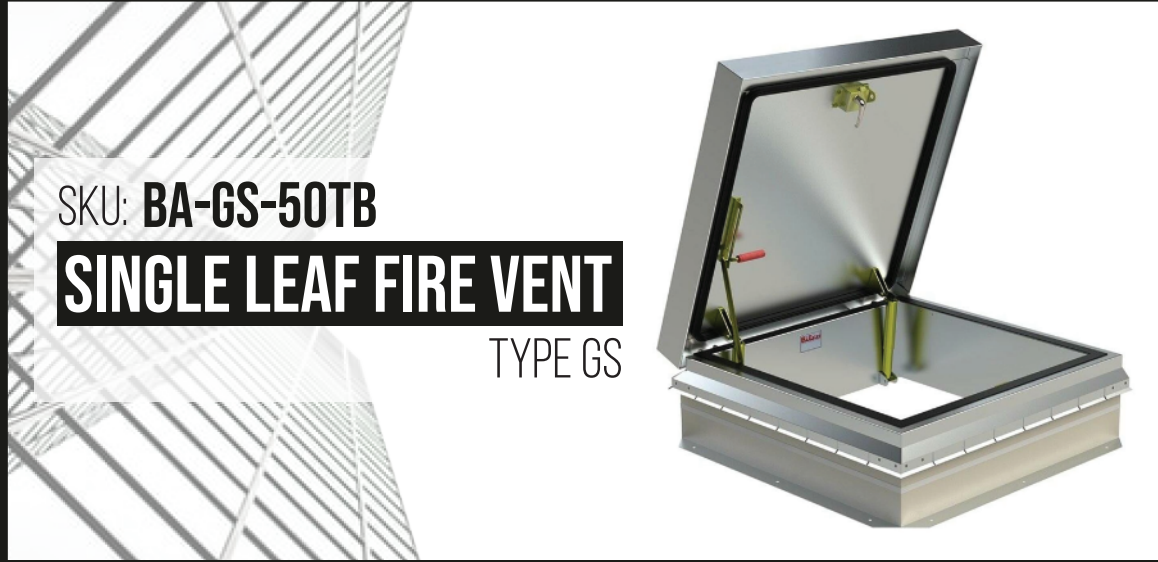
### NOTES:

This product may be installed on either a flat or sloping roof. When installed on a slope, the hinge side must run parallel with the slope. If slope exceeds 30°, advise factory for modification.

For a complete list of options visit [www.BestAccessDoors.com](http://www.BestAccessDoors.com)

QTY TYPE SIZE WIDTH X LENGTH

GS-50TB 3'-0" X 2'6" 915mm X 760mm HINGE SIDE



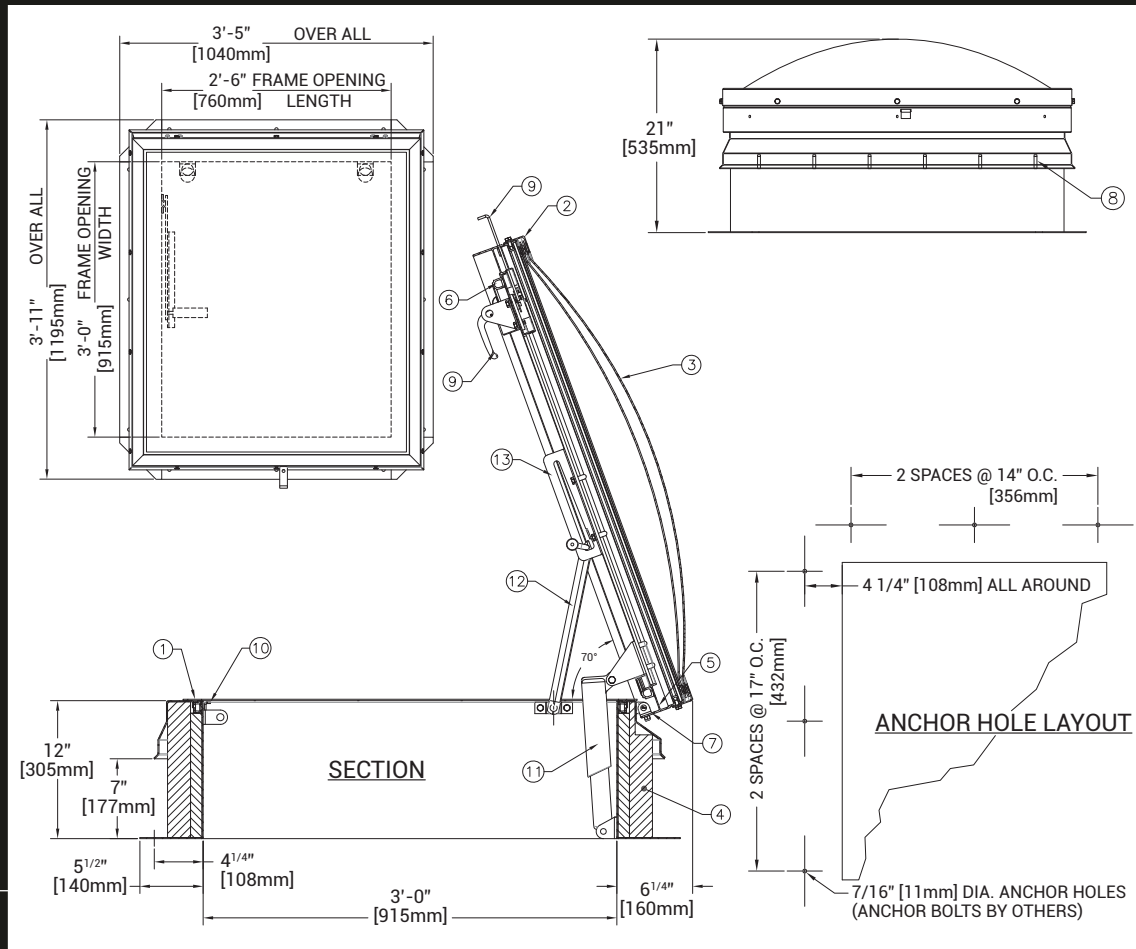
SKU: BA-GS-50TB

## SINGLE LEAF FIRE VENT

TYPE GS

### DIMENSIONS AND APPEARANCE

>> CLICK TO VIEW ADDITIONAL DETAILS AND PRICING <<



### PROJECT DATA

Custom Sizes Available - Fast!

|                        |   |   |   |         |
|------------------------|---|---|---|---------|
| PROJECT NAME :         | QTY                                       | W | H | OPTIONS |
| ARCHITECT :            |   |   |   |         |
| DEALER :               |   |   |   |         |
| CONTRACTOR :           |   |   |   |         |
| LOCATION :             | SPECIAL INSTRUCTIONS :                    |   |   |         |
| DATE :                 |   |   |   |         |
| TAGGING INSTRUCTIONS : | SUBMITTAL APPROVAL : (signature or stamp) |   |   |         |

TELEPHONE:  
1-800-483-0823  
FAX:  
1-888-828-6021



228 PARK AVE. S. #76520  
NEW YORK, NY, 10003



WEBSITE:  
[www.BestAccessDoors.com](http://www.BestAccessDoors.com)

E-MAIL:  
[info@bestaccessdoors.com](mailto:info@bestaccessdoors.com)

Scan or Click



To view Pricing and Additional Product Info.