



Quality Access Doors- **FAST!**

DESCRIPTION

The premium flush mounted vent and grille cover is an innovative flush access door for walls and ceilings. It is designed for installation in drywall, plaster, masonry, tile or any flush surface.

The door panel has a machined outer edge to allow for screws, tape, and drywall compound. It can be easily installed, and comes in prime coated white.

Not only that this panel is fire rated thus making it non-flammable, but it is also impact, moisture, water, and mold resistant!

This product is not only eco-friendly manufactured, but it also non-hazardous with triple fiber reinforced cement board.

APPLICATION

- Designed for ½" thick drywall for a permanent installation.
- Low and high wall installations.

FEATURES

- Triple Fibre Reinforced Cement Board.
- Easy Installation, primed and ready for paint.
- Machined outer edge to allow for screws, tape and drywall compound.
- 20 degree angled vent slots for directional venting.
- Fire Rated, Non-Flammable.
- Impact Resistant.
- Moisture and Water Resistant, Mold Resistant.
- Eco- Friendly Manufacturing and Non-Hazardous.

SPECIFICATIONS

- Over 68 square inches (439 Square CM) of open area.
- Slot Size - .32" x 5.915" (8mm x 150mm)
- 36 Slots Total
- Slot Angle - 20 degrees
- Overall dimensions ½" x 32" x 10" (12mm x 813mm x 254mm)

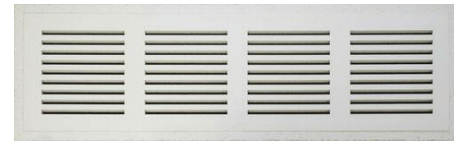
For a complete list of options visit
www.BestAccessDoors.com

SUBMITTAL/TECHNICAL DATA SHEET

SKU: **BA-IG-C30**

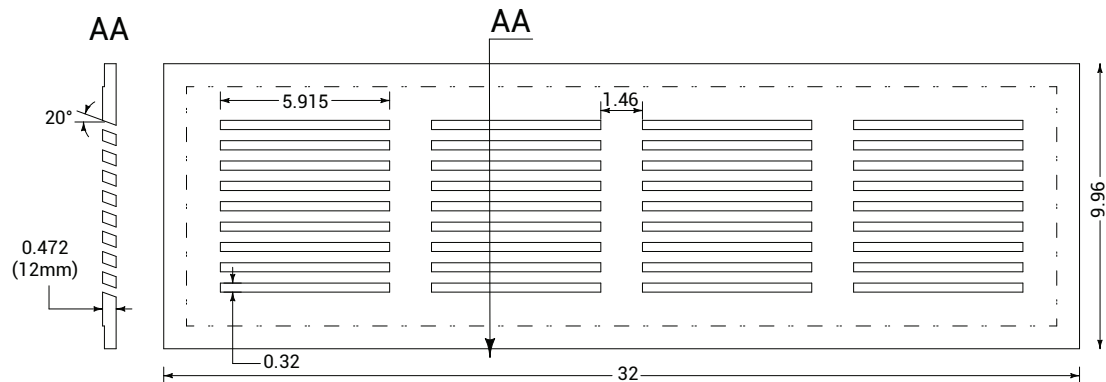
PREMIUM FLUSH MOUNTED VENT & GRILLE COVERS

PERMANENT COLD AIR RETURN



DIMENSIONS AND APPEARANCE

>> [CLICK TO VIEW ADDITIONAL DETAILS AND PRICING <<](#)



Material Information:

Raw Material - Magnesium sulphate cement, plant fibre, glass fibre cloth, perlite
Density - 0.95 g/cm³
Water Content - 12%
Chloride Ion Content - 0%
Formaldehyde Release - 0%
Asbestos Content - 0%
Fire resistance - Incombustibility A1 Class (GB 8624-2006/EN 13501-1)
Water Absorption - 27%
Resistant Bending Strength - 8 MPa
Impact Resistance - 1.5 J/m
Nail-Withdrawal strength - 16 N/mm
Water Permeability - No water vapour after 24 hour's test
Refractoriness (Pyrometric cone Test) - 4H
pH Value - 6.7(8.0)
Thermal conductivity - 0.2 W/(mK)
Moisture Movement - 0.25 %
Heat Shrinkage Rate - 0.05
Freeze Thaw - No distortion after 25 repeated cycles of freezing and thawing.

PROJECT DATA

Custom Sizes Available - Fast!

Scan  or  Click



To view Pricing and
Additional Product Info.

PROJECT NAME :	QTY	W	H	OPTIONS
ARCHITECT :				
DEALER :				
CONTRACTOR :				
LOCATION :	SPECIAL INSTRUCTIONS :			
DATE :				
TAGGING INSTRUCTIONS :	SUBMITTAL APPROVAL : (signature or stamp)			

TELEPHONE:
1-800-483-0823
FAX:
1-888-828-6021



228 PARK AVE. S. #76520
NEW YORK, NY, 10003



WEBSITE:
www.BestAccessDoors.com
E-MAIL:
info@bestaccessdoors.com