



Quality Access Doors- **FAST!**

APPLICATION

The KATR is designed to provide access in a suspended drywall ceiling that is part of a fire rated floor-ceiling assembly. The combination of steel and double thickness of drywall maintains the fire resistive qualities of the floor-ceiling assembly.

FEATURES

1. Frame shall be 16 gage steel and doors all be 18 gage steel.
2. Door shall be recessed 1 1/2" to accommodate double thickness of wall board.
3. Hinge shall be exposed, continuous piano hinge.
4. Locks shall be flush and screwdriver operated with 1 1/2" cam and lock studs, or shall be key operated cylinder lock with automatic dust shutter. Furnished with plastic grommet for studs only to protect hole made in wall board.
5. Finish shall be prime coat of rust inhibitive electrostatic powder, baked white enamel.
6. Sheet metal meets National Council of Radiation Protection #49.
7. Varying thicknesses of lead available. Custom door sizes also available.

OPTIONS

MATERIAL: Type 304 stainless steel is well-suited for exterior weathering locations or interior hygienic locations such as hospitals and health care, pharmaceutical plants, research laboratories and food processing facilities. Stainless steel is corrosion resistant, durable and requires very little maintenance. Karp's stainless steel access doors have a No. 4 satin finish, which is a general purpose bright finish with a visible "grain" which prevents mirror reflection.

ADDITIONAL: Removable doors allow for unobstructed access to wall or ceiling contents.

A 1/16" x 3/8" neoprene gasket can be added to the door providing a tighter seal between the door and door frame, adding protection from exposure to outside elements.

For a complete list of options visit
www.BestAccessDoors.com

SUBMITTAL/TECHNICAL DATA SHEET

SKU: **BA-KATR-LL**

LEAD LINED ACCESS DOOR

FOR DRYWALL CEILINGS

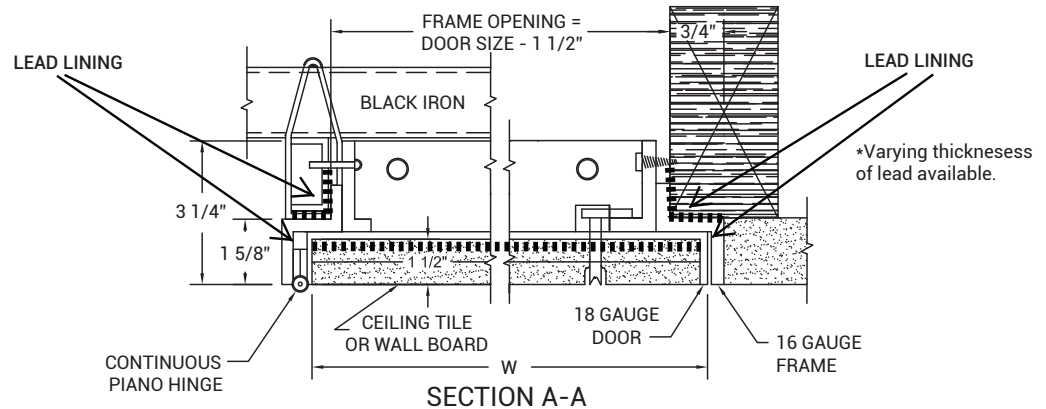
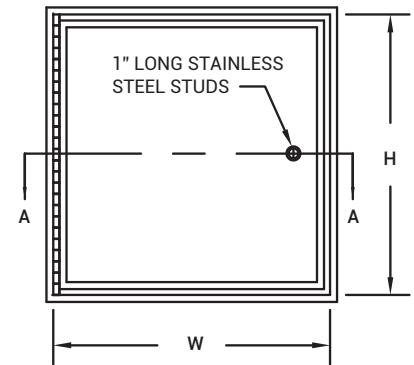


DIMENSIONS AND APPEARANCE

>> [CLICK TO VIEW ADDITIONAL DETAILS AND PRICING <<](#)

STANDARD SIZES:

DOOR SIZE W x H INC.	WALL/CEILING OPENING (IN.)	LATCHES	SHIP WT. LBS
12 x 12	10 1/2 x 10 7/2	1	6.7
18 x 18	16 1/2 x 16 7/2	2	11.6
24 x 24	22 1/2 x 22 7/2	2	18.1
24 x 36	28 1/2 x 28 7/2	2	19.5



PROJECT DATA

Custom Sizes Available - Fast!

Scan or Click



To view Pricing and
Additional Product Info.

PROJECT NAME :	QTY	W	H	OPTIONS
ARCHITECT :				
DEALER :				
CONTRACTOR :				
LOCATION :	SPECIAL INSTRUCTIONS :			
DATE :	SUBMITTAL APPROVAL : (signature or stamp)			
TAGGING INSTRUCTIONS :				

TELEPHONE:
1-800-483-0823
FAX:
1-888-828-6021



228 PARK AVE. S. #76520
NEW YORK, NY, 10003



WEBSITE:
www.BestAccessDoors.com
E-MAIL:
info@bestaccessdoors.com