



Toll Free Phone: 1-800-483-0823
 International: +1-(718) 841-7448
 Toll Free Fax: 1-888-828-6021
 Email: info@bestaccessdoors.com
 www.bestaccessdoors.com

CEILING ACCESS HATCHES

Model KSTE/CAD (Exposed Grid)

For Use in Square or Beveled Edge Ceiling Tile

DATE

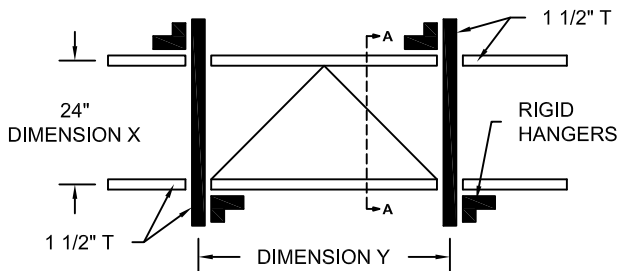


CONSTRUCTION:

1. Frame shall be 20 gage hot dipped galvanized steel.
2. Door shall be 20 gage electro-galvanized steel with 7/32" flange stove enameled white.
3. Escutcheon caps shall be plastic molded with hinged flaps.
4. Locks shall be budget locks operated with square shanked key.

STANDARD SIZES (Special Sizes On Request)

DOOR SIZE (IN.)		SHIP WT. (LBS.)
X	Y	
24 x 24		19.0
24 x 48		35.0

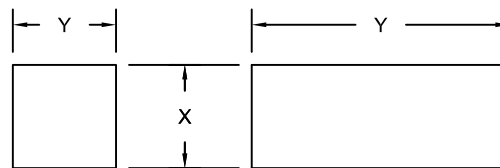


PANEL SUPPORT ILLUSTRATION

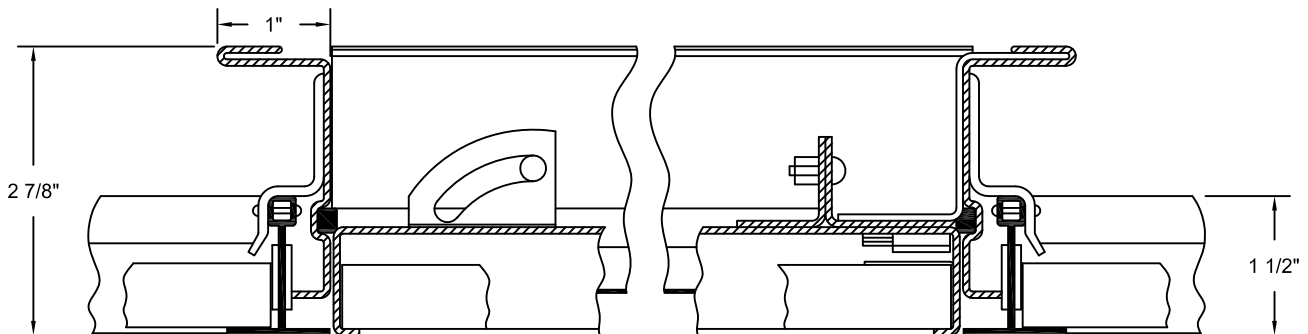
PROJECT DATA					
Project Name:					
Architect:					
Contractor:					
Agent/Customer Name:					
Tagging Instructions:					
Special Instructions:					

PROJECT SCHEDULE

Qty.	H	W	No. of Latches	Finish	Remarks



OPENING SYSTEMS



SECTION A-A
SCALE 1:2



Made with Union Labor