



Quality Access Doors- **FAST!**

# SUBMITTAL/TECHNICAL DATA SHEET

## SPECIFICATIONS

01. Frame w/ flashing (corners full welded)
  - L-20 - 14 gauge P.B. Galv. Steel
  - L-40 - 14 gauge P.B. Galv. Steel
  - L-50 - 11 gauge aluminum
02. Pintle hinge
03. Gasket (all around cover)
04. Cover gauge
  - L-20 - 14 gauge P.B. Galv. Steel
  - L-40 - 11 gauge aluminum
  - L-50 - 11 gauge aluminum
05. Cover liner
  - L-20 - 22 gauge P.B. Galv. Steel
  - L-40 - 18 gauge aluminum
  - L-50 - 18 gauge aluminum
06. Spring lifting mechanism
07. 1" rigid fiberboard insulation
08. Slam latch (2 Point)
09. Inside and outside handles w/ padlock hasps
10. Arm guide bracket
11. 1" thick fiberglass cover insulation
12. Hold open arm w/ red vinyl grip
13. Neoprene gasket
14. Lock strike
15. Bilclip® flashing system
16. Guide arm (If req'd)

### SHOP FINISH:

STEEL: Red oxide primer

ALUMINUM: Mill finish

HARDWARE: Non-corrosive materials  
(Unless otherwise specified)

This product may be installed on either a flat or sloping roof. When installed on a slope, the hinge side must run parallel with the slope. If slope exceeds 30°, advise factory for modification

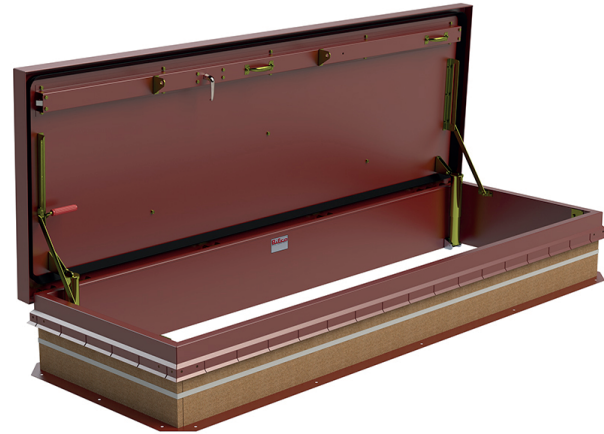
For a complete list of options visit  
[www.BestAccessDoors.com](http://www.BestAccessDoors.com)

QTY	TYPE	SIZE (INCHES) WIDTH X LENGTH	METAL
<input type="checkbox"/>	L-20	2'-6" X 8'-0"	STEEL COVER OR STEEL FRAME
<input type="checkbox"/>	L-40	2'-6" X 8'-0"	ALUM. COVER OR STEEL FRAME
<input type="checkbox"/>	L-50	2'-6" X 8'-0"	ALUM. COVER OR ALUM. FRAME

SKU: **BA-L-40**

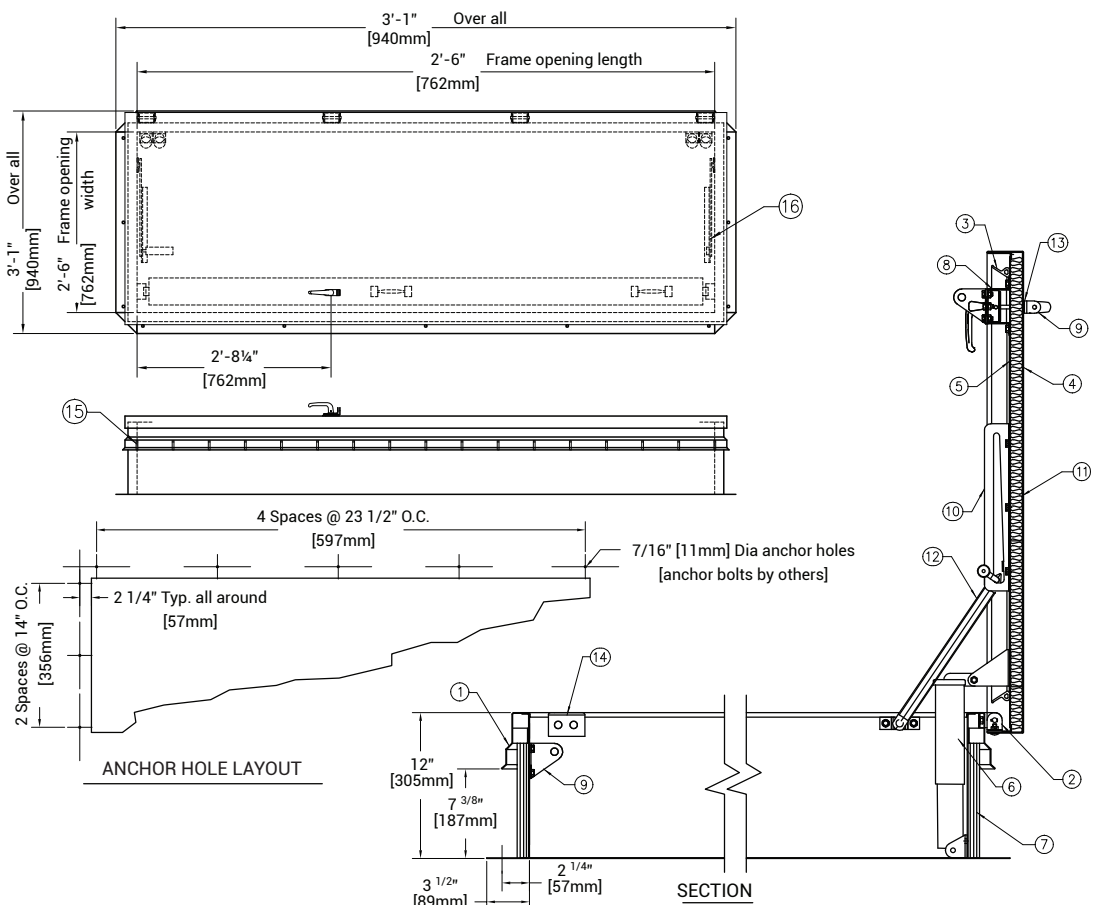
## SINGLE LEAF ROOF SCUTTLE

TYPE L





## DIMENSIONS AND APPEARANCE

>> CLICK TO VIEW ADDITIONAL DETAILS AND PRICING <<



## PROJECT DATA

Custom Sizes Available - Fast!

Scan  or  Click



To view Pricing and  
Additional Product Info.

PROJECT NAME :	QTY	W	H	OPTIONS
ARCHITECT :				
DEALER :				
CONTRACTOR :				
LOCATION :	SPECIAL INSTRUCTIONS :			
DATE :				
TAGGING INSTRUCTIONS :	SUBMITTAL APPROVAL : (signature or stamp)			

TELEPHONE:  
1-800-483-0823  
FAX:  
1-888-828-6021



228 PARK AVE. S. #76520  
NEW YORK, NY, 10003



WEBSITE:  
[www.BestAccessDoors.com](http://www.BestAccessDoors.com)  
E-MAIL:  
[info@bestaccessdoors.com](mailto:info@bestaccessdoors.com)