



Quality Access Doors - FAST!

SUBMITTAL/TECHNICAL DATA SHEET

APPLICATION

Aluminum wall mounted ladders are ideal to be used with any roof hatch. Ladder conforms to OSHA Standards 29CFR-1910.27. For additional support this ladder can also be mounted to the floor using the optional floor bracket.

FEATURES

- 15/16" square extruded aluminum climbing rungs spaced on 12" centers
- Loading: 300 LBS at midspan
- 3/8" x 2 1/2" Aluminum Side Members
- 7" Stand-off brackets
- Mill Finish

SPECIFICATIONS

- Aluminum Wall Mounted Ladder
- 15/16" square extruded aluminum climbing rungs spaced on 12" centers
- Loading: 300 LBS at midspan
- 3/8" x 2 1/2" Aluminum Side Members
- 7" Stand-off brackets
- Mill Finish



SKU: **BA-LDR**

ALUMINUM WALL MOUNTED LADDER

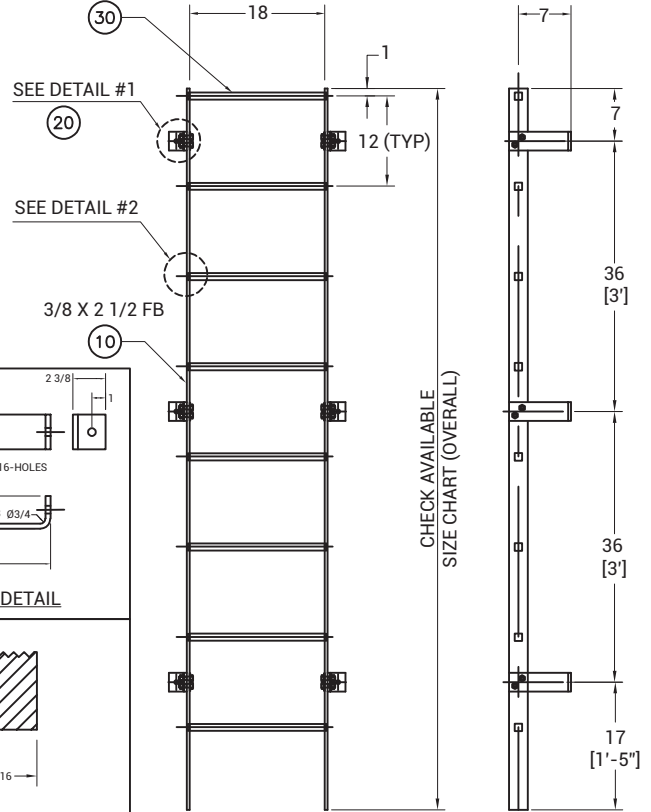
DIMENSIONS AND APPEARANCE

>> [CLICK TO VIEW ADDITIONAL DETAILS AND PRICING <<](#)

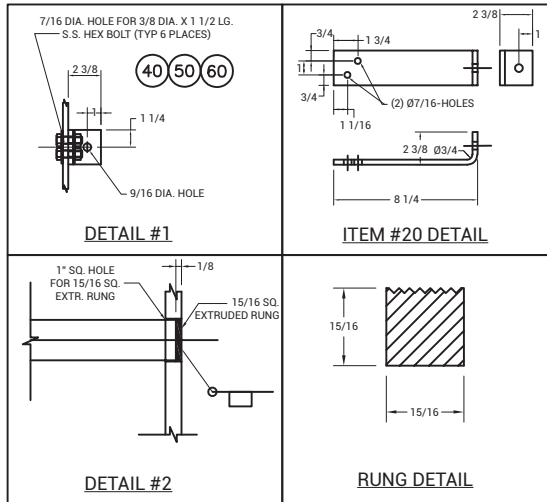
AVAILABLE SIZE CHART

FEET	INCHES
6ft	96"
8ft	114"
10ft	132"
12ft	150"
14ft	168"

15/16 SQ. EXTR. RUNG.



MANUFACTURED BY ACUDOR



For a complete list of options visit www.BestAccessDoors.com

PROJECT DATA

Custom Sizes Available - Fast!

PROJECT NAME :	QTY	W	H	OPTIONS
ARCHITECT :				
DEALER :				
CONTRACTOR :				
LOCATION :	SPECIAL INSTRUCTIONS :			
DATE :				
TAGGING INSTRUCTIONS :	SUBMITTAL APPROVAL : (signature or stamp)			

Scan or Click



To view Pricing and Additional Product Info.

TELEPHONE:
1-800-483-0823
FAX:
1-888-828-6021



228 PARK AVE. S. #76520
NEW YORK, NY, 10003



WEBSITE:
www.BestAccessDoors.com
E-MAIL:
info@bestaccessdoors.com