



Quality Access Doors- FAST!

# SUBMITTAL/TECHNICAL DATA SHEET

## SPECIFICATIONS

### MATERIAL:

- M: 14 gauge galvanized steel cover and curb
- RB: 14 gauge galvanized steel cover and curb
- RC: .090 Aluminum cover and 14 gauge galvanized steel curb
- RD: .090 Aluminum cover and curb

### FINISH:

- Galvanized Steel: White Powder Coat
- Aluminum: Mill Finish

### COVER:

- M & RB: 14 gauge galvanized steel exterior with 22 gauge galvanized steel liner bonded to core of 1" rigid styrofoam insulation (M Style) or 1" fiberglass insulation (RB Style).
- RC & RD: Mill finish .090 aluminum exterior with .063 aluminum liner with 1" fiberglass insulation. (RD-1 uses 1" Styrofoam insulation).

### CURB:

- M, RB & RC: 14 gauge galvanized steel with a 12" high curb, integral counterflashing, 3-1/2" wide mounting flanges with pre-drilled holes and 1" exterior fiberboard insulation
- RD: Mill finish .090 aluminum with a 12" high curb, integral counterflashing, 3-1/2" wide mounting flanges with pre-drilled holes and 1" exterior fiberboard insulation

**GASKET:** Extruded EPDM rubber gasket adhered to cover

**HINGES:** Steel Pintle Hinge

**LIFT ASSIST:** Cover operation is assisted by enclosed heavy-duty Torsion Coil Spring

**LATCHES:** Slam latch with exterior handles and padlock hasps.

**HARDWARE:** All hardware is zinc plated (stainless steel hardware optional)

### LOAD CAPACITY:

- M & RD-1: 70 psf
- RB, RC & RD-3x3: 40 psf

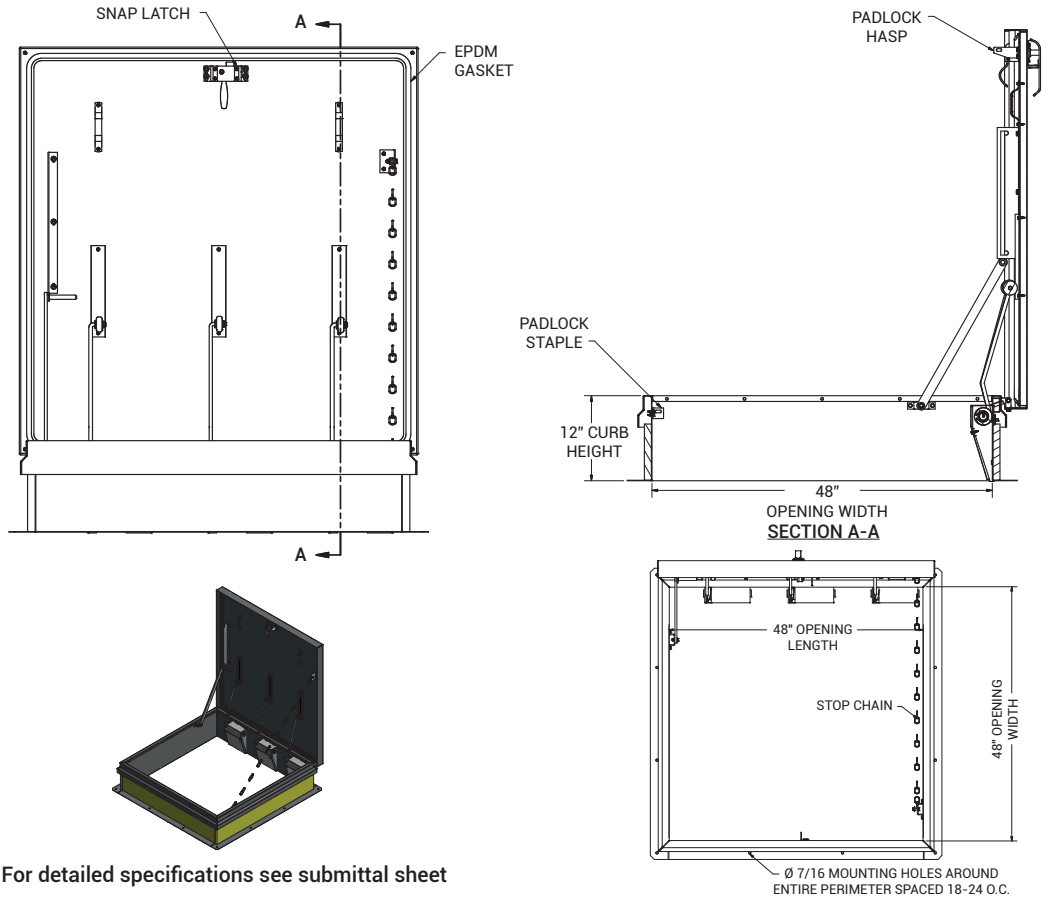
SKU: **BA-M-7**

## SINGLE LEAF ROOF HATCH



## DIMENSIONS AND APPEARANCE

>> [CLICK TO VIEW ADDITIONAL DETAILS AND PRICING <<](#)



For detailed specifications see submittal sheet

For a complete list of options visit [www.BestAccessDoors.com](http://www.BestAccessDoors.com)

## PROJECT DATA

Custom Sizes Available - Fast!

Scan or Click



PROJECT NAME :	QTY	W	H	OPTIONS
ARCHITECT :				
DEALER :				
CONTRACTOR :				
LOCATION :	SPECIAL INSTRUCTIONS :			
DATE :	SUBMITTAL APPROVAL : (signature or stamp)			
TAGGING INSTRUCTIONS :				

TELEPHONE:  
1-800-483-0823  
FAX:  
1-888-828-6021



228 PARK AVE. S. #76520  
NEW YORK, NY, 10003

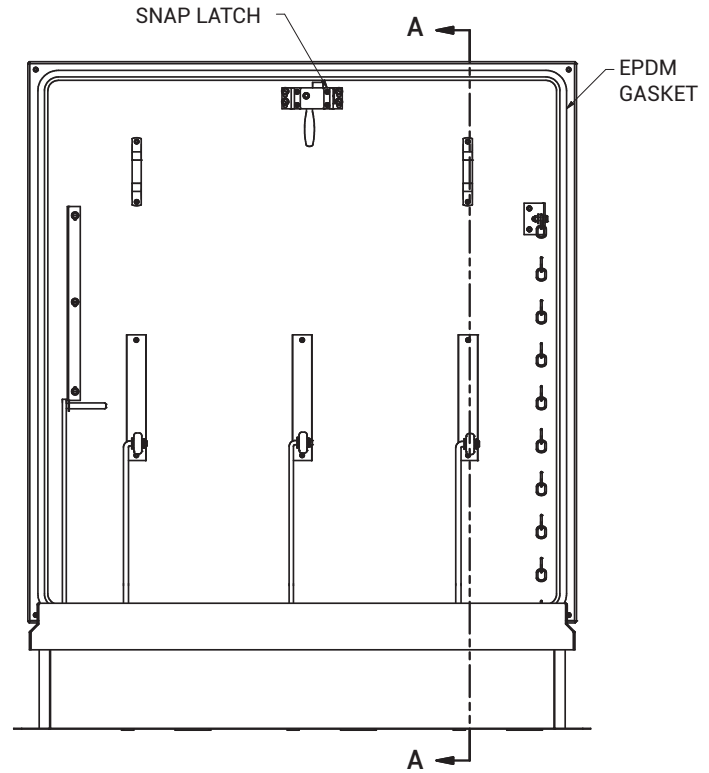
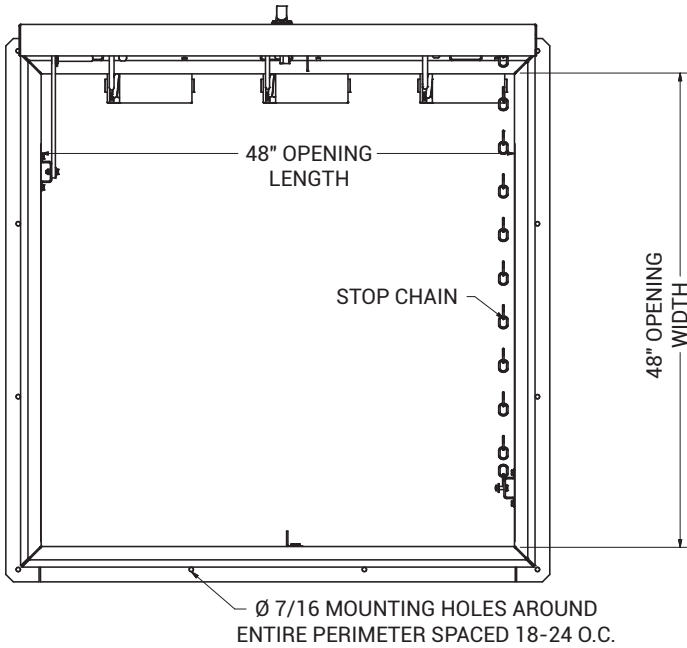


WEBSITE:  
[www.BestAccessDoors.com](http://www.BestAccessDoors.com)  
E-MAIL:  
[info@bestaccessdoors.com](mailto:info@bestaccessdoors.com)

To view Pricing and Additional Product Info.

# BA-M-7

# LADDER ACCESS ROOF HATCHES



**NOTES:**

SIZE: 4'-0" X 4'-0"

1. CURB MATERIALS
  - a. 14 GA GALVANIZED CURB
2. CURB CAP MATERIALS
  - b. 14 GA GALVANIZED CURB CAP
3. CURB INSULATION THICKNESS AND MATERIALS
  - c. 1" RIGID FIBERBOARD CURB INSULATION
4. COVER MATERIALS
  - d. 14 GA GALVANIZED COVER
5. COVER LINER MATERIALS
  - e. 22 GA GALVANIZED COVER LINER
6. COVER INSULATION THICKNESS AND MATERIALS
  - f. 1" POLYSTYRENE COVER INSULATION
7. COVER RATED FOR 70PSF LIVE LOAD
8. COVER AND CURB ARE PAINTED WHITE
9. ZINC PLATED HARDWARE

