



Quality Access Doors - FAST!

SUBMITTAL/TECHNICAL DATA SHEET

SPECIFICATIONS

01. Frame with flashing (corners full welded)
 - NB-20HZ - 14 gauge P.B. Galv. Steel
 - NB-50HZ - 11 gauge aluminum
02. Pintle hinge
03. Gasket (All around cover)
04. Cover gauge
 - NB-20HZ - 14 gauge P.B. Galv. Steel
 - NB-50HZ - 11 gauge aluminum
05. Cover liner
 - NB-20HZ - 22 gauge P.B. Galv. Steel
 - NB-50HZ - 18 gauge aluminum
06. Spring lifting mechanism
07. 1" rigid fiberboard insulation
08. Slam latch (2 point)
09. Inside and outside handles with padlock hasps
10. Arm guide bracket
11. 1" thick fiberglass cover insulation
12. Hold open arm with Red vinyl grip
13. Neoprene gasket
14. Lock strike & padlock hasp
15. Bilclip® flashing system
16. Guide arm

SHOP FINISH:

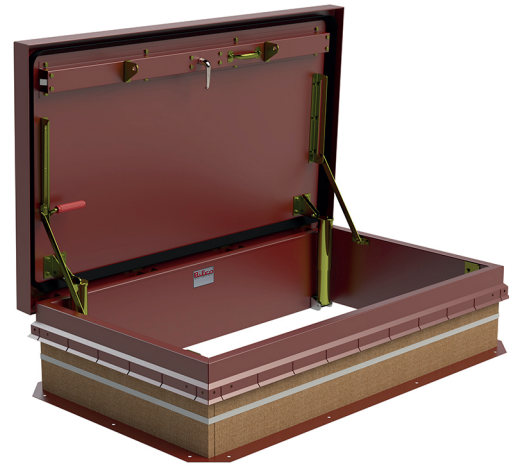
- STEEL: Red oxide primer
- ALUMINUM: Mill finish
- HARDWARE: Non-corrosive materials
(Unless otherwise specified)

This product may be installed on either a flat or sloping roof. When installed on a slope, the hinge side must run parallel with the slope. If slope exceeds 30°, advise factory for modification

SKU: **BA-NB-20HZ**

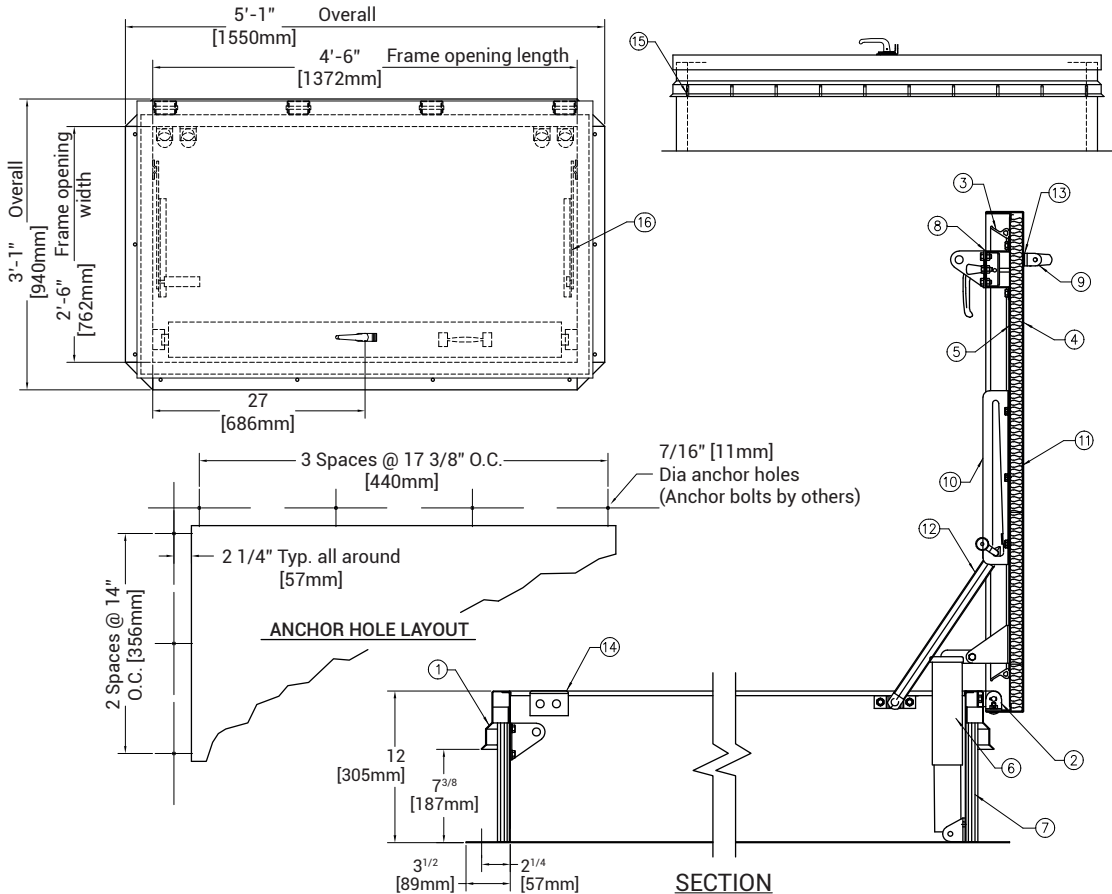
SINGLE LEAF ROOF SCUTTLE

TYPE NB-HZ



■ DIMENSIONS AND APPEARANCE

>> CLICK TO VIEW ADDITIONAL DETAILS AND PRICING <<



For a complete list of options visit www.BestAccessDoors.com

QTY	TYPE	SIZE (INCHES) WIDTH X LENGTH	METAL
1	NB-20HZ	2'-6" X 4'-6"	STEEL COVER/ STEEL FRAME
1	NB-50HZ	2'-6" X 4'-6"	ALUM. COVER/ ALUM. FRAME

■ PROJECT DATA

Custom Sizes Available - Fast!

Scan or Click



BEST ACCESS DOORS

To view Pricing and Additional Product Info.

PROJECT NAME :	QTY	W	H	OPTIONS
ARCHITECT :				
DEALER :				
CONTRACTOR :				
LOCATION :	SPECIAL INSTRUCTIONS :			
DATE :				
TAGGING INSTRUCTIONS :	SUBMITTAL APPROVAL : (signature or stamp)			

TELEPHONE:
1-800-483-0823
FAX:
1-888-828-6021



228 PARK AVE. S. #76520
NEW YORK, NY, 10003



WEBSITE:
www.BestAccessDoors.com
E-MAIL:
info@bestaccessdoors.com