

PW Series



Plastered Wall Access Doors

Doors are designed specifically to meet the needs of plaster construction. Door has 3/4" plaster ground for plaster finish.

Door and Frame are fabricated from 16 gage, galvanized steel with a white prime coat finish.

Frame has 1/4" mounting holes to facilitate installation.

Concealed Pivoting Rod Hinge prevents distortion and closes door squarely.

Latch is screwdriver operated.

Finish is a white prime coat suitable for painting.

Guide Specification

Provide Elmdor® PW Series, Plastered Wall Access Doors (specify model number and options). Access door and frame shall be fabricated from 16 gage, galvanized steel with a white prime coat finish. The door shall have a concealed pivoting rod hinge and a screwdriver operated latch. Finish shall be a white prime coat suitable for painting.



Member of U.S. Green
Building Council

PW

Revised: 08/29/17



Toll Free Phone: 1-800-483-0823
International: +1-(718) 841-7448

Toll Free Fax: 1-888-828-6021
Email: info@bestaccessdoors.com

Website: www.bestaccessdoors.com

MODEL NUMBER AND OPTIONS SELECTION

BASE MODEL NUMBER

PW Plastered Wall Access Door

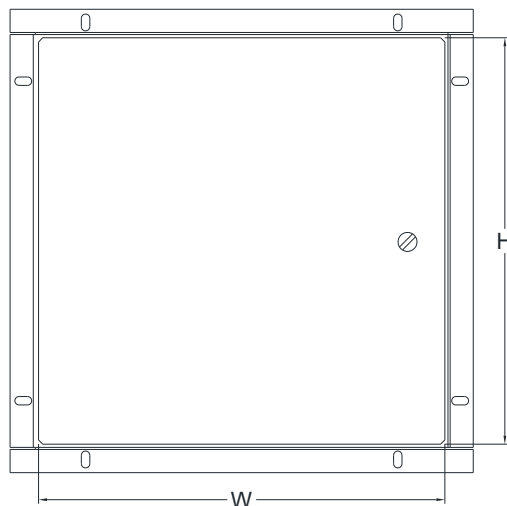
Suffix Options

- AKL Allen Key Latch
- CL Cylinder Lock (one per door)
- CLD Cylinder Lock with Dust Shutter (one per door)
- SS Stainless Steel Construction (Type 304 No. 4 Satin Finish)

STANDARD AVAILABLE SIZES

Special sizes available upon request.

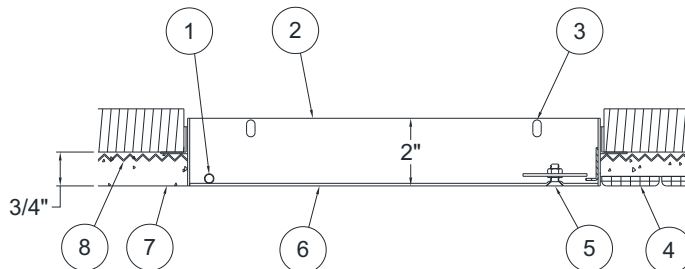
NOMINAL DOOR SIZE (W X H)	WALL OPENING (minimum required)	LATCHES	WEIGHT
PW 8" x 8"	8-1/4" x 8-1/4"	1	3.5 lbs.
PW 8" x 12"	8-1/4" x 12-1/4"	1	5 lbs.
PW 10" x 10"	10-1/4" x 10-1/4"	1	5.5 lbs.
PW 12" x 12"	12-1/4" x 12-1/4"	1	6 lbs.
PW 12" x 16"	12-1/4" x 16-1/4"	1	7.5 lbs.
PW 12" x 18"	12-1/4" x 18-1/4"	2	8.5 lbs.
PW 12" x 24"	12-1/4" x 24-1/4"	3	12 lbs.
PW 14" x 14"	14-1/4" x 14-1/4"	1	7.5 lbs.
PW 16" x 16"	16-1/4" x 16-1/4"	1	9.5 lbs.
PW 16" x 20"	16-1/4" x 20-1/4"	3	12 lbs.
PW 18" x 18"	18-1/4" x 18-1/4"	3	11 lbs.
PW 18" x 24"	18-1/4" x 24-1/4"	5	17.5 lbs.
PW 20" x 24"	20-1/4" x 24-1/4"	5	21 lbs.
PW 20" x 30"	20-1/4" x 30-1/4"	5	22 lbs.
PW 24" x 24"	24-1/4" x 24-1/4"	3	20 lbs.
PW 24" x 30"	24-1/4" x 30-1/4"	5	23.5 lbs.
PW 24" x 36"	24-1/4" x 36-1/4"	6	27 lbs.
PW 30" x 30"	30-1/4" x 30-1/4"	7	30 lbs.
PW 36" x 36"	36-1/4" x 36-1/4"	8	38 lbs.



FRONT VIEW

NOTES:

1. CONCEALED PIVOTING ROD HINGE
2. FRAME
3. MOUNTING HOLES
4. CERAMIC TILE OVER PLASTER
5. SCREWDRIVER OPERATED LATCH
6. DOOR
7. FINISH LINE, PLASTER OVER MASONRY
8. METAL LATH



SIDE VIEW

SELECTION SUMMARY & APPROVAL FOR MANUFACTURING	
Model Number & Options _____	Quantity _____
Company _____	Date _____
Contact _____	Title _____
Approval for Manufacturing/Signature _____	

PW

Revised: 08/29/17