

**BEST**  
**A C C E S S**  
**D O O R S**

*Quality Access Doors*  
**FAST!**

**2021**  
**PRODUCT**  
**CATALOG**



## ABOUT US

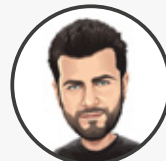
Best Access Doors takes pride in offering the best access doors, roof hatches, floor hatches, and more at prices you can afford!

Do you need a custom size access panel? Look no further! We are leaders in producing high quality doors of any size and style.

With our wide selection of access doors, we can help achieve LEED certification for your project.

Our team is always happy to assist you every step of the way. Customer satisfaction is our topmost priority.

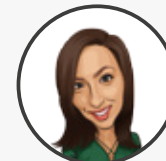
Thank you for shopping with us.



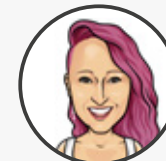
**CARLO**  
CEO



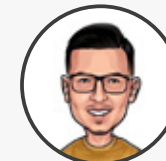
**FERN**  
Sales



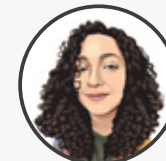
**ANDRIA**  
Sales



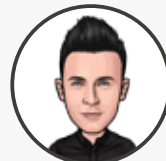
**RHEANNE**  
Sales



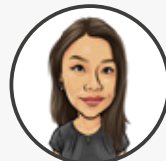
**MARKO**  
Sales



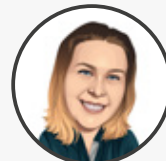
**DEBORAH**  
Sales



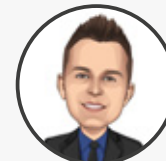
**KRISTOPHER**  
Sales



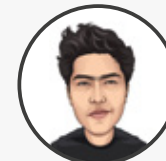
**ZYARINA**  
Order Management



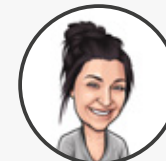
**SABRINA**  
Order Management



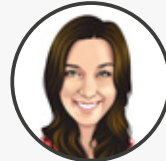
**TOM**  
Order Management



**MANISHA**  
Order Management



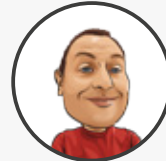
**EMMA**  
Customer Service



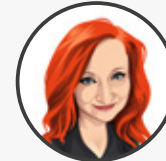
**SARA**  
Customer Service



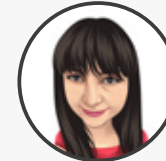
**LAUREN**  
Executive Assistant



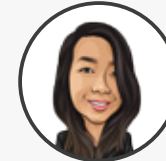
**ANTHONY**  
Project Manager



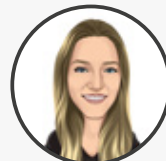
**JULIA**  
Technical



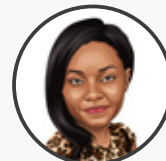
**MEGAN**  
Technical



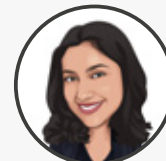
**CHESIA**  
Accounting



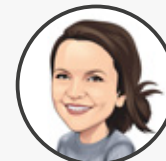
**NICOLE**  
Finance



**STACY**  
Finance



**ASHMEETA**  
Finance



**SHANNON**  
Finance





<b>FIRE RATED</b> ACCESS DOORS	4
<b>UNIVERSAL</b> ACCESS DOORS	11
<b>DRYWALL</b> ACCESS DOORS	20
<b>SPECIALTY</b> ACCESS DOORS	26
<b>HVAC</b> ACCESS DOORS	32
<b>EXTERIOR</b> ACCESS DOORS	39
<b>ROOF</b> HATCHES	44
<b>FLOOR</b> HATCHES	50
<b>OPTIONAL</b> FEATURES	57

Best Access Doors' fire rated panels are made of high quality materials and can help with your LEED certification.

We have fire rated access panels recessed for tiles; equipped with metal expansion lath for plaster and/or stucco application; upwards opening; and plenty other types of application.

The BA-PFI Access door is the perfect choice for your fire rated walls. The frame and door are made with steel and have two inches of mineral wool as its insulation. This model can be installed on any flush surface, which makes it an ideal access panel for your commercial or residential projects as required by code.

## APPLICATION

- Achieved rating of up to 3 hours, neutral/negative pressure for vertical wall installations.
- Achieved rating of up to 3 hours in non-combustible construction for horizontal ceiling installations.
- This model can contribute directly to a project's ability to achieve LEED certification for both USA and Canada.

## PRODUCT FEATURES

- 1" flange for an easy flush installation on any type of surface.
- Insulated with 2" thick mineral wool and can be used on fire rated walls and ceilings.
- Certified to standards of both UL and ULC.



AS FEATURED  
ON PAGE 4

Model	BA-PFI	BA-PFI-GYP	BA-PFI-SS	BA-PFU	BA-FWC-5015	BA-PFN	BA-PFN-GYP
Application	Ceiling & Wall	Ceiling & Wall	Ceiling & Wall	Ceiling	Ceiling	Wall	Wall
Fire rating label	✓	✓	✓	✓	✓	✓	✓
Insulation	✓	✓	✓	✓	✓	N/A	N/A
Standard lock/latch mechanism	Ring/tool key slam latch	Ring/tool key slam latch	Ring/tool key slam latch	Hex head slam latch	Key tool	Ring/tool key slam latch	Ring/tool key slam latch
Flange type	1" exposed flange	Drywall bead flange	1" exposed flange	1" exposed flange	Drywall bead flange	1" exposed flange	Drywall bead flange
Hinge type	Piano hinge	Piano hinge	Piano hinge	Piano hinge	Concealed	Piano hinge	Piano hinge
Inside latch release	✓	✓	✓	✓	✓	✓	✓

Model	BA-FW-5015	BA-PFI-HS	BA-FB-5060-TD	BA-FD2D	BA-FDU2RFS	BA-PFI-PLY	BA-PFN-PLY
Application	Wall	Ceiling & Wall	Walls	Ceiling	Wall	Ceiling & Wall	Wall
Fire rating label	✓	✓	✓	✓	✓	✓	✓
Insulation	N/A	✓	N/A	✓	N/A	✓	N/A
Standard lock/latch mechanism	Key tool	Mortise slam latch	Self-latching bolt	Hex head slam latch	Hex head slam latch	Ring/tool key slam latch	Ring/tool key slam latch
Flange type	Drywall bead flange	1" exposed flange	1" exposed flange	Exposed flange	Mounting holes	Metal lath	Metal lath
Hinge type	Concealed	Piano hinge	Piano hinge	Continuous rods	Piano hinge	Piano hinge	Piano hinge
Inside latch release	✓	✓	✓	✓	✓	✓	✓



## BA-PFI

### Insulated Access Door with 1" Flange

#### APPLICATION

For a flush fire rated surface, ideal access panel for your commercial or residential projects.

#### PRODUCT FEATURES

2" mineral wool insulation. Once installation is completed with the provided springs, door will be self closing & locking. Max 24x36 for ceiling.

#### STANDARD OPTION

Ring/tool key slam latch

AVAILABLE SIZES		(In inches)	
8 x 8	10 x 10	12 x 12	14 x 14
14 x 24	16 x 16	18 x 18	22 x 30
22 x 36	24 x 24	24 x 36	24 x 48
30 x 30	32 x 32	36 x 36	48 x 48



## BA-PFI-PLY

### Plaster Flange Ceiling Insulated Access Door

#### APPLICATION

Insulated and intended for fire rated walls, specifically those made of plaster.

#### PRODUCT FEATURES

This model is used only on fire rated plaster ceiling assembly. Once the lath flange is plastered, the panel is left visible. Max 24x36 for ceiling.

#### STANDARD OPTION

Ring/tool key slam latch

AVAILABLE SIZES		(In inches)	
8 x 8	12 x 12	16 x 16	18 x 18
22 x 22	22 x 30	22 x 36	24 x 24
24 x 36	32 x 32	36 x 36	



## BA-PFI-GYP

### Insulated Access Door with Mud in Flange

#### APPLICATION

Insulated and intended for fire rated ceilings, specifically those made of drywall.

#### PRODUCT FEATURES

Made with steel and has two inches of mineral wool insulation. The drywall bead flange is not exposed once the drywall compound is applied.

#### STANDARD OPTION

Ring/tool key slam latch

AVAILABLE SIZES		(In inches)	
8 x 8	12 x 12	16 x 16	18 x 18
22 x 22	22 x 30	22 x 36	24 x 24
24 x 36			



## BA-PFI-SS

### Stainless Steel Insulated Access Door with 1" Flange

#### APPLICATION

The BA-PFI also comes in stainless steel. Material is stainless steel #4 (brushed finish).

#### PRODUCT FEATURES

Insulated with 2" mineral wool. Applicable for installation on any surface, ideal for projects that need to pass code. Max 24x36 for ceiling.

#### STANDARD OPTION

Ring/tool key slam latch

#### AVAILABLE SIZES (In inches)

10 x 10	12 x 12	14 x 14	16 x 16
18 x 18	22 x 22	22 x 30	22 x 36
24 x 24	24 x 36	24 x 48	30 x 30
32 x 32	36 x 36	48 x 48	



## BA-PFU

### Ceiling Insulated Upward Opening Access Door with 1" Flange

#### APPLICATION

Does not exceed 89 degrees of upward opening and falls back into its locked position

#### PRODUCT FEATURES

Made with 16 gauge cold rolled steel frame and 20 gauge galvalume steel door. Equipped with hex head slam latch outside. Max 24x36 for ceiling.

#### STANDARD OPTION

Self latching ring operated & hex head slam latch

#### AVAILABLE SIZES (In inches)

22 x 30	22 x 36	24 x 24
---------	---------	---------



## BA-FWC-5015

### Recessed for Drywall Ceiling Insulated Access Door

#### APPLICATION

Recessed reinforced insulated panel with 5/8" fire rated drywall and 90 minutes fire resistance.

#### PRODUCT FEATURES

Concealed hinge ensures seamless appearance in ceiling. Perforated frame ensures trouble-free installation of the door. Max 24x36 for ceiling.

#### STANDARD OPTION

Key tool

#### AVAILABLE SIZES (In inches)

12 x 12	16 x 16	18 x 18	24 x 24
24 x 36			



## BA-PFN

### Uninsulated Access Door with Flange

#### APPLICATION

This uninsulated panel is perfect for installation in vertical wall assemblies and can only be used on fire rated walls.

#### PRODUCT FEATURES

2 hour fire barrier. Once the installation is completed with the provided springs, the door will be self closing and self locking.

#### STANDARD OPTION

Ring/tool key slam latch

#### AVAILABLE SIZES (In inches)

8 x 8	10 x 10	12 x 12	14 x 14
16 x 16	18 x 18	22 x 22	22 x 30
22 x 36	24 x 24	24 x 36	30 x 30
30 x 30	32 x 32	36 x 36	



## BA-PFN-PLY

### Plaster Wall Uninsulated Access Door

#### APPLICATION

This uninsulated model is used only on fire rated wall, specifically those made of plaster.

#### PRODUCT FEATURES

Made with steel and has two inches of mineral wool insulation. Applicable on any plaster walls, allowing the flange to disappear.

#### STANDARD OPTION

Ring/tool key slam latch

#### AVAILABLE SIZES (In inches)

8 x 8	12 x 12	16 x 16	18 x 18
22 x 22	22 x 30	22 x 36	24 x 24
24 x 36	32 x 32	36 x 36	



## BA-PFN-GYP

### Uninsulated Access Door with Mud in Flange

#### APPLICATION

Uninsulated and intended for fire rated walls, specifically those made of drywall.

#### PRODUCT FEATURES

Finished with DuPont high quality white powder coat. The drywall bead flange is not exposed once the drywall compound is applied.

#### STANDARD OPTION

Ring/tool key slam latch

#### AVAILABLE SIZES (In inches)

8 x 8	12 x 12	16 x 16	18 x 18
22 x 22	22 x 30	22 x 36	24 x 24
24 x 36	32 x 32	36 x 36	





## BA-FW-5015

### Recessed for Drywall Uninsulated Access Door

#### APPLICATION

Maintains 2-hour fire barrier continuity in a wall with a requirement of concealed door panel.

#### PRODUCT FEATURES

Recessed reinforced door fitted with 5/8" drywall. Frame flange with pre-punched holes for convenient mounting and accepting skim coat finish.

#### STANDARD OPTION

Key tool

#### AVAILABLE SIZES (In inches)

12 x 12	16 x 16	18 x 18	24 x 24
24 x 36			



## BA-PFI-HS

### High Security Insulated Security Access Door

#### APPLICATION

Insulated with 2" thick mineral wool and equipped with a mortise slam latch for security purposes.

#### PRODUCT FEATURES

Manufactured with 14 gauge cold rolled steel frame and 16 gauge galvanized steel door. This door includes an inside panel release.

#### STANDARD OPTION

Mortise slam latch

#### AVAILABLE SIZES (In inches)

8 x 8	10 x 10	12 x 12	14 x 14
16 x 16	18 x 18	22 x 22	22 x 30
22 x 36	24 x 24	24 x 36	24 x 48
30 x 30	32 x 32	36 x 36	48 x 48



## BA-FB-5060-TD

### Fire Rated Un-Insulated Recessed Door for Tile Walls

#### APPLICATION

The BA-FB-5060-TD recessed for tile, fire rated access door and is designed for use in tiled walls.

#### PRODUCT FEATURES

The door is recessed 1/2" and is lined with self-furring lath. Designed to maintain continuity in a 2-hour fire barrier wall.

#### STANDARD OPTION

Self-latching bolt

#### AVAILABLE SIZES (In inches)

12 x 12	18 x 18	24 x 24
---------	---------	---------



## BA-FD2D

### Oversized Insulated Double Door for Walls & Ceilings

#### APPLICATION

The largest fire-rated two hour door available with double doors and removeable center mullion.

#### PRODUCT FEATURES

Manufactured under the factory inspection service of Intertek. Listed access frame and insulated fire door assembly with 2 hour fire rating.

#### STANDARD OPTION

Hex head slam latch

#### AVAILABLE SIZES (In inches)

24 x 60	36 x 48	36 x 60	40 x 40
40 x 48	40 x 60	48 x 36	48 x 40
48 x 48	48 x 60	60 x 24	60 x 30
60 x 36	60 x 40	60 x 48	



## BA-FDU2RFS

### Surface Mounted Uninsulated Access Door for Walls

#### APPLICATION

Maintain the continuity of a fire barrier of a 2 hour fire rating in a vertical separation.

#### PRODUCT FEATURES

Manufactured under the factory inspection service of Intertek. Listed access frame and fire door assembly with 2-hour fire rating.

#### STANDARD OPTION

Hex head slam latch

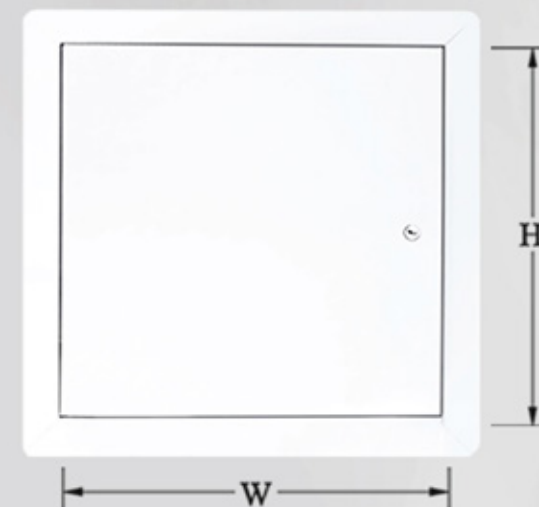
#### AVAILABLE SIZES (In inches)

10 x 10	12 x 12	14 x 14
---------	---------	---------

## MATCH THE OPENING...



## ...WITH THE PANEL



Best Access Doors' line of drywall access doors includes flush doors, hidden flange doors, recessed doors, fire rated doors and more.

Designed for a flawless finish and long-lasting use, our products provide an aesthetically pleasing way to hide your cables, unsightly wires, and even water valves.

Whether it be a renovation or new construction job, we have general purpose access doors like the BA-AHD that can be installed on any wall surface. Never have a hard time accessing important electrical / plumbing utilities again.

## APPLICATION

- Designed for a quick and easy installation on non-rated vertical and horizontal surfaces made of drywall or any other type of material.
- This access door can contribute directly to a project's ability to achieve LEED certification for both USA and Canada.
- Prevents sagging as compared to flat door panels and requires fewer locks.

## PRODUCT FEATURES

- Manufactured with rounded mitered corners.
- Equipped with concealed pin hinge and 3/8" return all around the door making it the sturdiest door on the market.



AS FEATURED  
ON PAGE 11

Model	BA-AHD	BA-UF-5000	BA-UF-5000-SS	BA-CTR	BA-CTR-MAG	BA-DRD	BA-FLE	BA-PA-3000	BA-PHS	BA-MS-7000
Application/Installation	Ceiling & Wall	Ceiling & Wall	Ceiling & Wall	Ceiling & Wall	Ceiling & Wall	Ceiling & Wall	Ceiling & Wall	Ceiling & Wall	Ceiling & Wall	Ceiling & Wall
Material	16 gauge cold rolled steel	14 gauge steel	Stainless Steel Type 304	16 gauge cold rolled steel	16 gauge cold rolled steel	16 gauge cold rolled steel	20 gauge cold rolled steel	Styrene plastic	10 gauge cold rolled steel plate	12 gauge steel
Standard lock/latch mechanism	Screwdriver operated	Screwdriver operated	Screwdriver operated	Screwdriver operated	Magnet	Ring/tool key	Magnet	Snap latches	Mortise dead bolt	Hex head
Flange type	1" exposed flange	1" exposed flange	1" exposed flange	Hidden flange	Hidden flange	1" exposed flange	Adjustable	1" solid	1" exposed flange	1" solid piece
Hinge type	Concealed pin hinge	Concealed pin hinge	Concealed hinge	Pantograph	Pantograph	Piano hinge	N/A	Concealed pin rods	Heavy duty butt hinges	Continuous rod hinge
Finish	White powder coat primed	White alykd baking enamel	#4 Satin Polish	White powder coat primed	White powder coat primed	White powder coat primed	N/A	White textured surface	White powder coat primed	White alykd baking enamel

Model	BA-HSP	BA-SP	BA-SF-2000	BA-UCSS	BA-BTV	BA-ARVB	BA-ASVB	BA-AT	BA-AT-5020	BA-TD-5025
Application/Installation	Ceiling & Wall	Ceiling & Wall	Ceiling & Wall	Ceiling & Wall	Wall	Wall	Wall	Ceiling & Wall	Ceiling & Wall	Ceiling & Wall
Material	7 gauge steel plate	10 gauge steel plate	16 gauge steel	22 gauge stainless steel	16 gauge cold rolled steel	16 gauge steel	16 gauge steel	16 gauge galvalanated steel	14 gauge steel	16 gauge satin coat steel
Standard lock/latch mechanism	Detention Deadlock	Detention Deadlock	Screwdriver operated	N/A	Screwdriver operated	Keyed cylinder	Keyed cylinder	Screwdriver operated	Screwdriver operated	Screwdriver operated
Flange type	2" solid piece	2" solid piece	1" solid piece	N/A	N/A	1" solid piece	N/A	N/A	N/A	N/A
Hinge type	Heavy duty butt hinges	Heavy duty butt hinges	Piano hinge	N/A	Pantograph	Concealed rod hinge	Piano hinge	Concealed	Concealed pivoting rods	Piano hinge
Finish	White powder coat paint	White powder coat paint	White alykd baking enamel	#4 Satin Brush	Grey powder coat paint	White alykd baking enamel	White alykd baking enamel	White prime coated	White alykd baking enamel	White powder coated



## BA-AHD

### General Purpose Access Door with Flange

#### APPLICATION

Quick and easy installation on non-rated vertical and horizontal surfaces.

#### PRODUCT FEATURES

The rounded mitered corners and concealed pin hinge make it the sturdiest door on the market. Features full length piano hinge for sizes above 24x24.

#### STANDARD OPTION

Screwdriver operated

#### AVAILABLE SIZES (In inches)

6 x 6	8 x 8	8 x 12	10 x 10
12 x 12	12 x 16	12 x 18	12 x 22
12 x 24	14 x 14	14 x 24	16 x 16
18 x 18	18 x 24	20 x 20	22 x 22
22 x 30	22 x 36	24 x 24	24 x 30
24 x 36	24 x 48	30 x 30	36 x 36



## BA-UF-5000

### Universal Flush Premium Access Door

#### APPLICATION

The door panel features rounded safety corners, which provide an architecturally pleasing appearance.

#### PRODUCT FEATURES

One piece trim flange will not rack, sag or distort. Equipped with a unique continuous concealed hinge that will not bind.

#### STANDARD OPTION

Screwdriver operated

#### AVAILABLE SIZES (In inches)

6 x 6	8 x 8	8 x 12	10 x 10
12 x 12	12 x 16	12 x 18	12 x 24
14 x 14	16 x 16	18 x 18	18 x 24
20 x 20	22 x 22	22 x 30	22 x 36
24 x 24	24 x 30	24 x 36	24 x 48
30 x 30	36 x 36		



## BA-UF-5000-SS

### Universal Flush Premium Access Door in Stainless Steel

#### APPLICATION

The door comes in a stainless Steel: type 304; #4 satin polish.

#### PRODUCT FEATURES

One piece trim flange will not rack, sag or distort. Equipped with a unique continuous concealed hinge that will not bind.

#### STANDARD OPTION

Screwdriver operated

#### AVAILABLE SIZES (In inches)

8 x 8	10 x 10	12 x 12	14 x 14
16 x 16	18 x 18	24 x 24	24 x 36





## BA-CTR

### Aesthetic Access Door with Hidden Flange

#### APPLICATION

A truly cohesive appearance due to its well-integrated design of concealing the space between the panel and the flange.

#### PRODUCT FEATURES

Equipped with a pantograph hinge that allows the door to close over the flange, thus avoiding additional labor to mud or plaster the flange.

#### STANDARD OPTION

Screwdriver operated

AVAILABLE SIZES		(In inches)	
8 1/4 x 8 1/4	8 1/4 x 12	10 x 10	12 x 12
12 x 18	14 x 14	16 x 16	18 x 18
18 x 24	20 x 20	22 x 22	22 x 30
22 x 36	24 x 24	24 x 30	24 x 36

## BA-CTR-MAG

### Aesthetic Access Door with Hidden Flange & Magnetic Latches

#### APPLICATION

The BA-CTR-MAG is equipped with hidden magnetic closing mechanism, thus an elegant and subtle finish.

#### PRODUCT FEATURES

A hidden magnetic closing mechanism gives the BA-CTR-MAG an elegant and subtle finish. Equipped with a concealed double arm pantograph system.

#### STANDARD OPTION

Magnet

AVAILABLE SIZES		(In inches)	
8 1/4 x 8 1/4	8 1/4 x 12	10 x 10	12 x 12
12 x 18	14 x 14	16 x 16	18 x 18
18 x 24	20 x 20	22 x 22	22 x 30
22 x 36	24 x 24	24 x 30	24 x 36

## BA-DRD

### Draft Stop Access Door

#### APPLICATION

The draft stop door features an automatic panel closer.

#### PRODUCT FEATURES

16 gauge cold rolled steel frame and 20 gauge galvalume steel door. Once installation is completed, door will be self closing and self locking.

#### STANDARD OPTION

Ring/tool key

AVAILABLE SIZES		(In inches)	
8 x 8	10 x 10	12 x 12	14 x 14
16 x 16	18 x 18	22 x 22	22 x 30
22 x 36	24 x 24	24 x 36	24 x 48
24 x 60	30 x 30	32 x 32	36 x 36
36 x 48			



## BA-FLE

### Adjustable Magnetic Flexisnap Access Door

#### APPLICATION

Adjustable to the size of the opening; offering a durable and versatile flush-mounted, metal panel.

#### PRODUCT FEATURES

Adjustable frame, powerful magnets, door glides, and a pair of security cables to ensure the access panel is secured.

#### STANDARD OPTION

Magnet

AVAILABLE SIZES		(In inches)
6.5 to 8	10.5 to 12	14 to 15.5



## BA-PA-3000

### Flush Plastic Access Door

#### APPLICATION

Designed to provide not only attractive, but also economical easy access to walls and ceilings.

#### PRODUCT FEATURES

Completely removable from the frame and fits tightly with snap latches. The white finish can be left as is or painted to match surrounding areas.

#### STANDARD OPTION

Snap latches

AVAILABLE SIZES				(In inches)
4 x 6	6 x 9	8 x 8	12 x 12	
14 x 14	14 x 29	18 x 18	22 x 22	
24 x 24				



## BA-PHS

### High Security Access Door

#### APPLICATION

The BA-PHS is designed to be used in situations where security is of the utmost importance.

#### PRODUCT FEATURES

Made of 10 gauge cold rolled steel plate and 2" x 2" x 3/16" angle frame. Can be prepped for all types of deadlocks to meet requirements.

#### STANDARD OPTION

Mortise dead bolt

AVAILABLE SIZES				(In inches)
12 x 12	16 x 16	18 x 18	24 x 24	
24 x 36	36 x 36			



## BA-MS-7000

### Medium Security Access Panel

#### APPLICATION

The MS-7000 is ideal for use in medium security jails, prisons, psychiatric institutions.

#### PRODUCT FEATURES

12 gauge door and frame construction and tamperproof security cam latches. Comes with one piece trim flange and continuous concealed hinge.

#### STANDARD OPTION

Hex head

#### AVAILABLE SIZES (In inches)

12 x 12	16 x 16	18 x 18	24 x 24
24 x 36	36 x 36		



## BA-HSP

### 7 Gauge Steel High Security Access Panel

#### APPLICATION

Heavy-duty security access panel, the 7 gauge BA-HSP provides a solid and secured construction.

#### PRODUCT FEATURES

7 gauge box-formed steel door mounted on 2 heavy-duty 4" butt hinges welded to the frame.

#### STANDARD OPTION

Detention deadlock

#### AVAILABLE SIZES (In inches)

8 x 8	10 x 10	12 x 12	14 x 14
16 x 16	18 x 18	24 x 24	24 x 36
24 x 48			



## BA-SP

### Flat Frame 10 Gauge Steel Security Access Panel

#### APPLICATION

This 10 gauge security access panels provide you with the solid construction and lock options.

#### PRODUCT FEATURES

Frame is 2" x 2" x 3/16" angle frame, welded at corners with 1" door stop and a 10 gauge plate steel door mounted on heavy-duty detention hinges.

#### STANDARD OPTION

Detention deadlock

#### AVAILABLE SIZES (In inches)

8 x 8	10 x 10	12 x 12	14 x 14
16 x 16	18 x 18	24 x 24	24 x 36
24 x 48			



## BA-SF-2000

### Surface Mounted Access Panel

#### APPLICATION

Easy installation with mounting holes in each corner. Perfect for access to odd size opening.

#### PRODUCT FEATURES

An exposed continuous piano hinge allows 175 degrees opening. Features rounded safety corners providing an architecturally pleasing finish..

#### STANDARD OPTION

Screwdriver operated

#### AVAILABLE SIZES (In inches)

8 x 8	12 x 12	16 x 16	24 x 24
-------	---------	---------	---------



## BA-UCSS

### Universal Access Cover

#### APPLICATION

Provides quick, convenient and aesthetically pleasing cover with its Stainless Steel #304 material.

#### PRODUCT FEATURES

Square shaped, bevelled edges and rounded corners with countersunk holes for installation screws .Oval Head Square Tapping screws included.

#### STANDARD OPTION

N/A

#### AVAILABLE SIZES (In inches)

6 x 6	8 x 8	10 x 10	12 x 12
14 x 14	16 x 16	18 x 18	20 x 20
20 x 20			



## BA-BTV

### Valve Box with Window and Hidden Flange

#### APPLICATION

Practical, the cabinet can be pre-drilled to accept water pipes, gas pipes and conduits.

#### PRODUCT FEATURES

The beveled panel is aesthetically pleasing and functional. Equipped with Plexiglass window to allow viewing. Comes in various depths.

#### STANDARD OPTION

Screwdriver operated

#### AVAILABLE SIZES (In inches)

8 1/4 x 8 1/4	12 x 12	16 x 16	24 x 24
---------------	---------	---------	---------



## BA-ARVB

### Recessed Valve Box

#### APPLICATION

Provides easy access to valves/controls requiring concealment yet protected by a fully enclosed box.

#### PRODUCT FEATURES

16 gauge, fully enclosed, completely attached to frame. The depth of the valve box can be modified to meet all the valve/control requirements.

#### STANDARD OPTION

Keyed cylinder

#### AVAILABLE SIZES (In inches)

8 x 8	8 x 8	8 x 8	12 x 12
12 x 12	12 x 12		



## BA-ASVB

### Surface Mounted Valve Box

#### APPLICATION

Allows access to valves extended outside the finished wall, needing protection by an enclosed box.

#### PRODUCT FEATURES

When required, vision panels, louvers, engraved plates can be supplied, along with special holes for pipes or conduits.

#### STANDARD OPTION

Keyed cylinder

#### AVAILABLE SIZES (In inches)

8 x 8



## BA-AT

### Recessed Access Door for Acoustical Tile

#### APPLICATION

For use with acoustical tile or gypsum board, engineered to install flush, virtually concealed.

#### PRODUCT FEATURES

Door is recessed 5/8" to accept acoustical tile or gypsum board. The door is engineered to install flush, virtually concealed.

#### STANDARD OPTION

Screwdriver operated

#### AVAILABLE SIZES (In inches)

8 x 8	8 x 8	8 x 8	12 x 12
12 x 12	12 x 12		





## BA-AT-5020

**Recessed Access Door with Pin Hinge and No Flange**

### APPLICATION

Installed door remains invisible ensuring architecturally pleasing appearance. Recessed to 1".

### PRODUCT FEATURES

Manufactured with 16 gauge 5-stage iron phosphate preparation with prime coat of White alkyd baked-on enamel.

### STANDARD OPTION

Screwdriver operated

### AVAILABLE SIZES (In inches)

12 x 12	18 x 18	24 x 24	24 x 36
---------	---------	---------	---------



## BA-TD-5025

**Recessed Access Door for Tile and Marble**

### APPLICATION

This recessed access door is ideal for use on tiled and marbled walls of various thickness.

### PRODUCT FEATURES

3/4" recessed tray to accept 5/8" MDF and glue by others. Constructed with 16 gauge to ensure strength and rigidity.

### STANDARD OPTION

Screwdriver operated

### AVAILABLE SIZES (In inches)

12 x 12	14 x 14	16 x 16	18 x 18
24 x 24	24 x 36		

**CUSTOM SIZES  
AVAILABLE IN  
5 DAYS**

***FAST DELIVERY***

**CALL 1-800-483-0823**



Best Access Doors' line of drywall access doors includes flush doors, hidden flange doors, recessed doors, fire rated doors and more. They are useful in various commercial and residential applications, providing an aesthetically pleasing way to conceal cables, unsightly wires, and even water valves.

The BA-FI drywall inlay access panel with fixed hinges has an aluminum frame, with drywall insert for wall, ceilings, and various applications. It is available in moisture resistant, mildew resistant, and cement board.

## APPLICATION

- Consists of a welded aluminum frame and is available with 1/2" (12.7 mm) or 5/8" (15.9 mm) inlayed drywall and two latches.
- Both an outer and an inner frame assembly consists of high grade aluminum which is bonded with a special welding process.
- The reveal of 1/16 of an inch (1.59 mm) is visible between the outer frame and door hatch.

## PRODUCT FEATURES

- Equipped with a safety cables prevent accidental opening. This safety system must be reattached if the hatch is removed.
- Available with moisture resistant green board drywall insert
- Standard concealed snap locks open the access panel when pressure is applied to the spring-loaded latch side.



AS FEATURED  
ON PAGE 20

Model	BA-F1	BA-F2A	BA-F2DF	BA-F3	BA-FSR	BA-MW	BA-AHD-GYP	BA-EDG-GYP	BA-GFRG-RH	BA-GFRG-R
Application/ Installation	Ceiling & Wall	Ceiling & Wall	Walls	Walls	Ceiling & Wall	Walls	Ceiling & Wall	Ceiling & Wall	Ceiling	Ceiling
Material	Drywall inlay with aluminum frame	Drywall inlay with aluminum frame	Drywall inlay with aluminum frame	Drywall inlay with aluminum frame	Drywall inlay with aluminum frame	Drywall inlay with aluminum frame	16 gauge colled rolled steel	16 gauge colled rolled steel	Glass fiber reinforced gypsum	Glass fiber reinforced cement
Standard lock/latch mechanism	Touch latches	Touch latches	Touch latches	Touch latches	Touch latches	Touch latches	Screwdriver operated	Touch latches	Screwdriver operated cam latch	N/A
Flange Type	Behind drywall	Behind drywall	Behind drywall	Behind drywall	Behind drywall	Behind drywall	Drywall bead flange	Drywall bead flange	N/A	N/A
Hinge type	Fixed hinge	U-hinge	Pin hinge	Pin Hinge	T-Hinge	Pin Hinge	Pin Hinge	Spring Hinge	N/A	N/A
Recessed	5/8" or 1/2"	5/8" or 1/2"	5/8" or 1/2"	5/8" or 1/2"	5/8" or 1/2"	5/8" or 1/2"	N/A	N/A	N/A	N/A
Finish	Drywall	Drywall	Drywall	Drywall	Drywall	Drywall	White powder coat primed	White powder coat primed	Gypsum	Gypsum



## BA-F1

### Drywall Inlay Access Panel with Fixed Hinges

#### APPLICATION

Aluminum frame, with drywall insert, for ceilings, drywall, and various applications.

#### PRODUCT FEATURES

Consists of welded aluminum frame and is available with or without 1/2" or 5/8" inlayed drywall and touch latches.

#### STANDARD OPTION

Touch Latch

#### AVAILABLE SIZES (In inches)

8 x 8	12 x 12	16 x 16	18 x 18
20 x 20	24 x 24	24 x 36	



## BA-F2A

### Drywall Inlay Access Panel with Fully Detachable Hatch

#### APPLICATION

Aluminum frame, with drywall insert, for ceilings, drywall, and various applications.

#### PRODUCT FEATURES

Equipped with a perimeter seal. The concealed snap locks open the access panel when pressure is applied to the spring loaded latches.

#### STANDARD OPTION

Touch Latch

#### AVAILABLE SIZES (In inches)

8 x 8	12 x 12	16 x 16	18 x 18
20 x 20	22 x 30	22 x 36	24 x 24
24 x 36	30 x 30		



## BA-F2DF

### Drywall Inlay Access Panel with Mud in Flange with Detachable Hatch

#### APPLICATION

Aluminum frame, with drywall insert, to be used in wall / vertical drywall installation.

#### PRODUCT FEATURES

Drywall beaded flange; drywall compound to be applied to leave just the panel visible. Equipped with a touch latch.

#### STANDARD OPTION

Touch Latch

#### AVAILABLE SIZES (In inches)

8 x 8	12 x 12	16 x 16	18 x 18
20 x 20	24 x 24	24 x 36	



## BA-F3

### Drywall Inlay Access Panel for Tiling

#### APPLICATION

Aluminum frame with drywall insert to accept tiles on top of the panel.

#### PRODUCT FEATURES

Aligned to the grid dimension of the tiles. The aluminum profile is flush with the board. The tiles are placed upon the profile.

#### STANDARD OPTION

Touch Latch

#### AVAILABLE SIZES (In inches)

8 x 8	12 x 12	16 x 16	18 x 18
20 x 20	24 x 24		

## BA-FSR

### Drywall Inlay Access Panel Round Panel

#### APPLICATION

The round access door is available with drywall and blends seamlessly into the surrounding area.

#### PRODUCT FEATURES

Fully removable, a functional yet aesthetically pleasing solution. A small reveal of 1/16" is visible between the outer frame and door hatch.

#### STANDARD OPTION

Touch Latch

#### AVAILABLE SIZES (In inches)

8 x 8	12 x 12	16 x 16	20 x 20
24 x 24			

## BA-MW

### Drywall Inlay Access Panel for Masonry applications

#### APPLICATION

Designed to be recessed into concrete walls. Comes with predrilled holes for easy installation.

#### PRODUCT FEATURES

Both an outer and an inner frame assembly consists of high grade aluminum which is bonded with a special welding process.

#### STANDARD OPTION

Touch Latch

#### AVAILABLE SIZES (In inches)

8 x 8	12 x 12	16 x 16	18 x 18
20 x 20	24 x 24	24 x 36	





## BA-AHD-GYP

### General Purpose Access Door with Mud in Flange

#### APPLICATION

The BA-AHD-GYP access door is engineered for a clean final finish.

#### PRODUCT FEATURES

Once a sufficient layer of drywall compound is applied, it will only leave the door panel visible. Comes with a concealed pin hinge and 1/4" return.

#### STANDARD OPTION

Screwdriver operated

#### AVAILABLE SIZES (In inches)

8 x 8	10 x 10	12 x 12	14 x 14
16 x 16	18 x 18	22 x 22	24 x 24
24 x 36			



## BA-EDG-GYP

### Flush Access Door with Concealed Latch and Drywall Flange

#### APPLICATION

Practical with removable, concealed spring and pin type hinges and push-to-close latches.

#### PRODUCT FEATURES

Once the corner bead plastered, the door becomes almost invisible. It is perfect for application on walls or ceilings composed of any material.

#### STANDARD OPTION

Touch Latch

#### AVAILABLE SIZES (In inches)

6 x 6	8 x 8	8 x 12	10 x 10
12 x 12	12 x 16	12 x 18	12 x 24
14 x 14	16 x 16	18 x 18	18 x 24
20 x 20	22 x 22		



## BA-GRGH-RH

### Hinged Glass Fiber Reinforced Gypsum Radius Corner

#### APPLICATION

Glass fiber reinforced gypsum access panels designed to blend seamlessly into your ceiling or walls.

#### PRODUCT FEATURES

Consists of a frame and door with concealed hinges and a concealed key lock. Available in round or square corner.

#### STANDARD OPTION

Screwdriver operated cam latch

#### AVAILABLE SIZES (In inches)

9 x 9	12 x 12	16 x 16	18 x 18
24 x 24			



## BA-GFRG-R

### Pop Out Glass Fiber Reinforced Gypsum Radius Corner Panel

#### APPLICATION

Designed to blend seamlessly into drywall ceiling or into exterior soffits/ceilings.

#### PRODUCT FEATURES

Tapered edge for joint tape. Easily textured, lightweight, and mold and moisture resistant. Available in round or square corner.

#### STANDARD OPTION

N/A

#### AVAILABLE SIZES

(In inches)

6 x 6	8 x 8	9 x 20	12 x 12
12 x 16	12 x 24	14 x 14	16 x 16
16 x 28	18 x 18	22 x 34	24 x 24
36 x 36	38 x 40	42 x 42	42 x 50
48 x 48	48 x 50		

# WHEN YOU NEED ACCESS DOORS!

## 1-800-483-0823

## BESTACCESSDOORS.COM



Best Access Door's specialty doors are ideal for use in laboratories, clean rooms, operating rooms, etc. where an airtight/watertight seal is required. Our specialty doors come in a wide-array of sizes with special or customize sizes available upon request. Comes in prime coated and stainless steel.

The BA-ADWT is a flush access door that has been tested for air infiltration and water penetration. This door as well as its frame are fully welded and gasketed to ensure watertightness and airtightness. This access door model is ideal for use in laboratories, clean rooms, operating rooms, etc. where an airtight/watertight seal is required. Comes in both prime coated and stainless steel.

## APPLICATION

- Achieved rating for air infiltration : less than 0.01 cfm/sq foot ASTM E 283
- Achieved rating for water penetration: no leakage at 15.05 psf ASTM E 331
- Gasketed with a continuous Bulb Trim Seal

## PRODUCT FEATURES

- Door is flush to frame with reinforced edges to maintain water and air tightness.
- Steel: 5-stage iron phosphate preparation with prime coat of White alkyd baking enamel or Stainless steel: Type 304 #4 satin polish



AS FEATURED  
ON PAGE 26

Model	BA-ADWT	BA-ADWT-SS	BA-ACF-2064	BA-ACD-2064	BA-TBC	BA-LHD-180	BA-STC	BA-KSTC	BA-BXTA-H
Application/Installation	Ceiling & Wall	Ceiling & Wall	Walls	Walls	Ceilings	Walls	Walls	Ceilings	Walls & Ceilings
Material	16 gauge steel	16 gauge stainless steel	18 gauge satin coat steel	18 gauge satin coat steel	Aluminum	16 gauge colled rolled steel	16 gauge steel	20 gauge galvanized steel	24 gauge galvalneal steel
Standard lock/latch mechanism	Stainless Steel Phillips Screws	Stainless Steel Phillips Screws	Screwdriver operated compression latch	Hex head operated compression latch	Key operated	Screwdriver operated	Lift & Turn Compression Latch	Square shanked key operated budget locks	Non locking handle
Flange type	1.375" solid piece	1.375" solid piece	1" solid	Drywall bead flange	N/A	1" exposed flange	1" solid piece	N/A	1" exposed flange
Hinge type	Piano hinge	Piano hinge	Piano hinge	Piano hinge	Piano hinge	Piano hinge	Piano hinge	Pivoting rod hinge	Piano hinge
Airtight	✓	✓	N/A	N/A	N/A	N/A	N/A	N/A	N/A
Watertight	✓	✓	N/A	N/A	N/A	N/A	N/A	N/A	N/A
Sound Rating	N/A	N/A	STC 64 and OITC 54	ASTM: E1332, ASTM: E90, ASTM: E413, and STC 64	N/A	N/A	ASTM: E1332, ASTM: E90, ASTM: E413, and STC 64	N/A	N/A
Gasket	✓	✓	✓	✓	N/A	N/A	✓	✓	✓
Finish	Prime coated	Mill finish	White alykd baking enamel	Satin Coat Steel	N/A	White powder coat primed	✓	✓	✓



## BA-ADWT

### Airtight / Watertight Access Panel

#### APPLICATION

Ideal for laboratories, clean rooms, operating rooms where an airtight/watertight seal is required.

#### PRODUCT FEATURES

A flush access door that has been tested for air infiltration and water penetration. The door and frame are fully welded.

#### STANDARD OPTION

Stainless Steel Phillips Screws

#### AVAILABLE SIZES

(In inches)

12 x 12	14 x 14	18 x 18	24 x 24
24 x 36	30 x 30	30 x 48	

## BA-ADWT-SS

### Airtight / Watertight Access Panel in Stainless Steel

#### APPLICATION

Similar to the BA-ADWT, however in Stainless Steel for application that requires where an airtight/watertight seal.

#### PRODUCT FEATURES

Manufactured with stainless steel #4 satin polish.

#### STANDARD OPTION

Stainless Steel Phillips Screws

#### AVAILABLE SIZES

(In inches)

12 x 12	14 x 14	18 x 18	24 x 24
24 x 36	30 x 30	30 x 48	

## BA-ACF-2064

### Steel Flush Acoustical Access Door

#### APPLICATION

This flush access door is ideal for use where maintaining STC Rating and OITC Rating is required.

#### PRODUCT FEATURES

Zinc coated steel provides corrosion resistance. Tested and evaluated to ASTM requirements, and certified to STC Rating 64 and OITC Rating 54.

#### STANDARD OPTION

Screwdriver operated compression latch

#### AVAILABLE SIZES

(In inches)

12 x 12	18 x 18	24 x 24	24 x 36
---------	---------	---------	---------



## BA-ACD-2064

### Recessed Acoustical Access Door for Drywall

#### APPLICATION

This recessed access door is ideal for use on acoustical drywall walls requiring a concealed finish.

#### PRODUCT FEATURES

Fitted with 5/8" thick drywall, ensures finish similar to surrounding. Insulated with 1 1/2" thick acoustic mineral liner.

#### STANDARD OPTION

Hex head operated compression latch

#### AVAILABLE SIZES

(In inches)

12 x 12      18 x 18      24 x 24      24 x 36



**NEW PRODUCT**

## BA-TBC

### T Bar Drop in Ceiling

#### APPLICATION

Drops into the 1" steel stud grid and allows an opening of up to 180 degrees.

#### PRODUCT FEATURES

Manufactured with aluminum and is equipped with flush stainless steel cam. Powder coated white finish.

#### STANDARD OPTION

Key operated

#### AVAILABLE SIZES

(In inches)

24 x 24      24 x 48



**NEW PRODUCT**

## BA-LHD-180

### Heavy Duty Double Leaf Access Door

#### APPLICATION

For large openings, features 16-gauge cold rolled steel, double doors, and inside panel release.

#### PRODUCT FEATURES

Mechanisms to allow panels to open from inside and manufactured with 16 gauge cold rolled steel with a continuous piano hinge.

#### STANDARD OPTION

Screwdriver operated

#### AVAILABLE SIZES

(In inches)

48 x 48





## BA-STC

### Sound Rated Access Panel with Keyed Paddle Latch

#### APPLICATION

Independently tested in accordance with ASTM and is rated STC 64 when installed accordingly.

#### PRODUCT FEATURES

Acoustical insulation shall be 2 3/8" thick with a gasketing between door and frame 3/8" wide by 1/8" thick closed cell neoprene gasketing.

#### STANDARD OPTION

Lift & Turn Compression Latch

#### AVAILABLE SIZES (In inches)

12 x 12	16 x 16	18 x 18	24 x 24
---------	---------	---------	---------



## BA-KSTC

### Sesame Concealed Grid Ceiling Hatch

#### APPLICATION

Designed for use with concealed and exposed grid systems. Panel opens up to receive tile.

#### PRODUCT FEATURES

Door panel on the sesame doors will open to a check position for safety and then release for a 90° opening and is removable.

#### STANDARD OPTION

Square shanked key operated budget locks

#### AVAILABLE SIZES (In inches)

24 x 24	24 x 48
---------	---------



## BA-BXTA-H

### Coastal Zone Exterior Access Door with Non-locking Handle

#### APPLICATION

The only high velocity & impact tested door. Designed to withstand mother nature's toughest storms.

#### PRODUCT FEATURES

Impact, Air + Wind Pressure Tested. Insulated for Temperature Control. Can withstand up to 80psf.

#### STANDARD OPTION

Non locking handle

#### AVAILABLE SIZES (In inches)

18 x 18	20 x 30	24 x 24	24 x 30
24 x 36	36 x 36		



## HOSPITALS | HEALTH SERVICE | MEDICAL

TORONTO WESTERN HOSPITAL



BCEHS TELECOMMUNICATIONS



AQUALITAS INC



## HOTELS

ANDAZ - HYATT HOTEL



FAIRMONT - ROYAL YORK HOTEL



DRAYTON VALLEY HOTEL



KILLARNEY MOUNTAIN LODGE



## BUILDING PROJECTS

ZIP SIGNS LTD



HOME BUILDING CENTER



BLUEROCK THERAPEUTICS



SIR CORP



INSIGHT ENGINEERING &amp; CONSTRUCTION



YORK UNIVERSITY



NOMODIC



RHINO FINISHING MATERIALS INC



CAMP MUSKOKA



EVERGREEN LAUNDRY CENTRE



THE HAMLETS AT DEER PARK



REGION OF WATERLOO



LA VIE EN ROSE



MAPLEHURST CORRECTIONAL COMPLEX



ALLFINE SECURITY



## LARGE BUILDER

PSL MECHANICAL



XANA INTERNATIONAL INC



COVENANT CONSTRUCTION



CARTER &amp; CARTER



CENTRAL WEST PROJECT MANAGEMENT INC



4SITE RETAIL INC



SAYWELL DEVELOPMENTS LTD



ASBEX ENVIRONMENTAL CONTRACTORS


POMERLEAU (TORONTO) BUILDING CONST.  
POMERLEAU


SANAQATIT CONSTRUCTION



BROWN DANIELS ASSOCIATES INC.



AJS CONTRACTING



LES BERTRAM &amp; SONS (1985) LIMITED



JOINER CONSTRUCTION



CREATE CONSTRUCTION MANAGEMENT GROUP



ELLISDON



CAPITAL DRYWALL SYSTEMS LTD



RBD CONSTRUCTION LTD



FIELDGATE CONSTRUCTION MANAGEMENT LTD



GILLAM GROUP INC.



CAPITAL PLUMBING AND HEATING



PCL CONSTRUCTORS CANADA INC.



CLAYBAR CONTRACTING



TAXIS CONTRACTING LTD



# QUALITY ACCESS DOORS

# FAST DELIVERY

CONTACT US AT

[info@bestaccessdoors.com](mailto:info@bestaccessdoors.com)

Best Access Doors offers all types of duct access doors for kitchen exhaust systems. Our HVAC access doors meet and exceed requirements on all mechanical codes. Louvered and grille covers are also one of our specialties. We have removeable panels for cold air returns, as well as vent fan coil doors.

For ducts, we have an array of selection such as our round ducts, grease ducts, as well as fiberglass ducts. Our HVAC doors meet and exceed requirements on all mechanical codes.

## APPLICATION

To allow easy periodic system cleaning and maintenance, access panels are installed at the main sheet-metal duct. Louvered and grille covers are also one of our specialties. We have removeable panels for cold air returns, as well as vent fan coil doors.

## PRODUCT FEATURES

Special product features include bolt in unit easily installed into existing ductwork, duct cutout template, two handles for easy removal and installation, and 16 gauge galvanized steel, among others. Our HVAC doors meet and exceed requirements on all mechanical codes. They are easy to install and remove.



AS FEATURED  
ON PAGE 32

Model	BA- HVAC-HDI	BA- HVAC-MAH	BA-VFCD	BA- IG-C	BA-IG	BA- IG-MAG	BA-UFLV
Application/ Installation	Wall	Wall	Wall	Wall	Wall	Wall	Wall
Material	Drywall	Galvanneal steel	Steel	24 gauge galvanized steel	24 gauge galvanized steel	24 gauge galvanized steel	14 gauge galvanized steel
Standard lock/ latch mechanism	Touch latches	Magnet	Concealed & stainless steel screw driver operated	N/A	Magnet	Magnet	Screwdriver operated
Flange type	N/A	1" exposed flange	Brake formed with reinforced mitered corner	Mud in flange	Drywall bead flange	Drywall bead flange	1" solid piece
Hinge type	Pin	Concealed, when applicable	Concealed	N/A	N/A	N/A	Concealed
Finish	N/A	White baked enamel	White prime coated	White prime coated	White prime coated	White prime coated	White alykd baking enamel

Model	BA- CDSS-6030	BA- CD-5080-HP	BA- CD-5080-F	BA-GDD	BA- RD-5090	BA- WD-8000	
Application/ Installation	Ducts	High Pressure Duct	Fiberglass Duct	Grease Duct	Round duct	Wall & Ducts	
Material	Galvanized steel	24 gauge galvanized steel	24 gauge galvanized steel	16 gauge galvanized steel	16 gauge galvanized steel	22 gauge galvanized steel	
Standard lock/ latch mechanism	Self tightening, hand operated cam latch	Self tightening, hand operated cam latch	Self tightening, hand operated cam latch	Bolt in	Plated steel pull & catch	Dual acting compression handles	
Flange type	1" exposed flange	1" exposed flange with knock over tabs	N/A	N/A	N/A	N/A	
Hinge type	N/A	N/A	N/A	N/A	N/A	Continuous steel piano hinge	
Finish	N/A	N/A	N/A	N/A	N/A	Mill Finish	



## BA-HVAC-HDI

### Hidden Air Handler Access Door

#### APPLICATION

Access door for air handler units and other HVAC applications.

#### PRODUCT FEATURES

Comes with drywall inlay and have a slot to slide in grilles.

#### STANDARD OPTION

Touch Latch

#### AVAILABLE SIZES

(In inches)

Custom sizing available



## BA-HVAC-MAH

### Metal Air Handler Access Door

#### APPLICATION

Provides access to HVAC air handling units. Facilitates periodic HVAC inspection and maintenance.

#### PRODUCT FEATURES

Made with galvalume steel and have return air feature. Equipped with a continuous piano hinge and magnets to secure the door into place.

#### STANDARD OPTION

Magnet

#### AVAILABLE SIZES

(In inches)

Custom sizing available



## BA-VFCD

### Vent Fan Coil Door

#### APPLICATION

Provides unobstructed access and easy serviceability to vertical fan coil units in luxury hotels, condominiums, apartments.

#### PRODUCT FEATURES

Flush louvers and flush mount return air panel with convenient air filter replaceability. Integrated louvers assure quiet operation.

#### STANDARD OPTION

Concealed & stainless steel screw driver operated

#### AVAILABLE SIZES

(In inches)

Custom sizing available



## BA-IG-C

### Premium Flush Mounted Vent & Grille Cover - Permanent Cold Air Return

#### APPLICATION

The premium flush mounted vent and grille cover is an innovative flush mud in grille for walls and ceilings.

#### PRODUCT FEATURES

The grille has a machined outer edge to allow for screws, tape, and drywall compound. Easy installation, and comes in prime coated white.

#### STANDARD OPTION

N/A

#### AVAILABLE SIZES

(In inches)

14 x 8      30 x 6



## BA-IG

### Premium Flush Mounted Vent & Grille Cover

#### APPLICATION

Designed for installation in drywall, plaster, masonry, tile or any flush surface.

#### PRODUCT FEATURES

Can be easily installed and comes in prime coated white. Fire rated as well as impact, moisture, water, and mold resistant.

#### STANDARD OPTION

Magnet

#### AVAILABLE SIZES

(In inches)

8 x 8      12 x 12



## BA-IG-MAG

### Premium Flush Mounted Vent & Grille Cover - Removable Cold Air Return

#### APPLICATION

The premium flush mounted vent and grille cover is an innovative removeable grille for drywall walls and ceilings.

#### PRODUCT FEATURES

Features a magnetic removable grille which provides easy access. Eco-friendly manufactured with triple fiber reinforced cement board.

#### STANDARD OPTION

Magnet

#### AVAILABLE SIZES

(In inches)

4 x 10      14 x 8      30 x 8



## BA-UFLV

### Louvered Access Door with Flange

#### APPLICATION

An innovative universal flush access door for drywall, plaster, masonry, tile or any flush surface.

#### PRODUCT FEATURES

Features louvered panels and equipped with screwdriver cam latch. Mounting frame is a one piece outer flange welded to mounting frame.

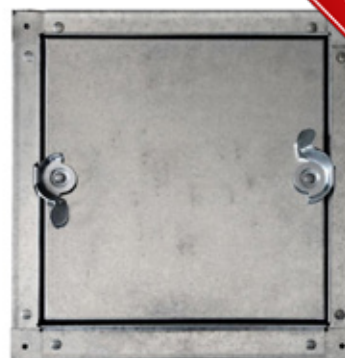
#### STANDARD OPTION

Screwdriver operated

#### AVAILABLE SIZES

(In inches)

12 x 12      18 x 18      24 x 24



**NEW PRODUCT**

## BA-CDSS-6030

### Self Stick Duct Door

#### APPLICATION

An innovative self stick frame for easy installation that provides easy access to sheet metal ducts.

#### PRODUCT FEATURES

Insulated door panel, double cam, no hinge with adhesive bonded gasket between frame and duct. It has been tested to 10" SP with minimal leakage.

#### STANDARD OPTION

Self tightening, hand operated cam latch

#### AVAILABLE SIZES

(In inches)

6 x 6      8 x 8      10 x 10      12 x 12  
14 x 14      16 x 16      18 x 18      20 x 20  
24 x 24



**NEW PRODUCT**

## BA-CD-5080-HP

### High Pressure Duct Door

#### APPLICATION

Used in high pressure ducts up to 8" static pressure. An economical access to high pressure duct.

#### PRODUCT FEATURES

24 gauge, double panel with high temperature glue. Pressure rated to 8" W.G. with leakage up to 2 CFM per sq. ft. or less.

#### STANDARD OPTION

Self tightening, hand operated cam latch

#### AVAILABLE SIZES

(In inches)

6 x 6      8 x 8      10 x 10      12 x 12  
14 x 14      16 x 16      18 x 18      20 x 20  
24 x 24



## BA-CD-5080-F

### Removeable Duct Door for Fiberglass Ducts

#### APPLICATION

These removeable duct doors are for use in low to medium pressure fiberglass ducts

#### PRODUCT FEATURES

1/8" thick by 1/2" wide closed cell neoprene gasketing between door and frame with an insulation of 1" Micro-Airc M/F type 475, R Value 7.7.

#### STANDARD OPTION

Self tightening, hand operated cam latch

#### AVAILABLE SIZES (In inches)

6 x 6	8 x 8	10 x 10	12 x 12
14 x 14	16 x 16	18 x 18	20 x 20
24 x 24			



## BA-GDD

### Grease Duct Door

#### APPLICATION

Access door for installation into grease ducts. Duct cutout template included for installation.

#### PRODUCT FEATURES

No bolts penetrate to the duct interior. Bolts in unit installed into existing ductwork with two handles for easy removal and installation.

#### STANDARD OPTION

Bolt in

#### AVAILABLE SIZES (In inches)

7 x 7	7 x 12	7 x 20	12 x 12
12 x 20	16 x 20	20 x 20	



## BA-RD-5090

### Duct Door for Round Ducts

#### APPLICATION

BA-RD-5090 is designed to provide convenient, economical access to round ducts.

#### PRODUCT FEATURES

Pull and catch lock system with gasketing on the door assures a tight seal without obstruction in the air system

#### STANDARD OPTION

Plated steel pull & catch

#### AVAILABLE SIZES (In inches)

6 x 4	7 x 5	8 x 6	9 x 8
10 x 8	11 x 9	13 x 10	15 x 13
17 x 13	19 x 15	19 x 17	20 x 17





## BA-WD-8000

### Large Walk Through Duct Door

#### APPLICATION

Designed to provide convenient walk through access to duct work interiors and air handling units.

#### PRODUCT FEATURES

Heavy duty construction with 22 gauge galvanized steel, continuous hinge and compression handles. Insulated with 1" fibreglass at 4 R value.

#### STANDARD OPTION

Dual acting compression handles

#### AVAILABLE SIZES

(In inches)

24 x 36	24 x 48	24 x 60	24 x 72
30 x 36	30 x 48	30 x 60	30 x 72



Applicable in exterior facades, Best Access Doors offers exterior panels with weather resistance construction. A neoprene gasket and fiberglass insulation encompass our aluminum insulated door while our steel insulated door includes styrofoam insulation, providing resistance to water and water vapor.

The BA-MX insulated exterior access door is engineered to withstand years of exposure to severe outdoor elements. This high-quality, galvanized steel door comes with a galvanized hinge. To further weatherproof the door, this model is arc-welded and the corners of the trim and pan are grounded smooth, ensuring a watertight seal between the door and frame.

## APPLICATION

This high-quality, galvanized steel door comes with a galvanized hinge. The combination of these components with its' electrostatic rust-inhibitive powder finish provides two durable protective layers.

To further weatherproof the door, the corners of the trim and pan arc-welds and grounded smooth, which with the addition of closed-cell neoprene gasket and a Lift & Turn Compression Latch, ensuring a seal between the door and frame.

## PRODUCT FEATURES

- Latch shall be Lift & Turn Compression Latch including cup sealing gasket finished in textured chrome. Keyed.
- Finish shall be prime coat of rust inhibitive electrostatic powder, baked white enamel.



AS FEATURED  
ON PAGE 39

Model	BA-MX	BA-MX-PL	BA-ED	BA-LT-4000	BA-PAL	BA-WSR	BA-XTA
Application/ Installation	Walls & Ceilings	Stucco Walls & ceilings	Walls & Ceilings	Walls & Ceilings	Walls & Ceilings	Walls & Ceilings	Wall
Material	18 gauge galvanized steel	18 gauge galvanized steel	16 gauge galvanized steel	Aluminum	Aluminum	16 gauge galvanized steel	Aluminum
Standard lock/ latch mechanism	Compression latch	Compression latch	Knurled knob and key cylinder	Screwdriver operated	Key operated	Screwdriver operated	Lockable compression paddle latch
Flange type	1" solid piece	Metal lath	1" solid piece	1" exposed flange	1" exposed flange	Exposed flange	1" solid piece
Hinge type	Piano hinge	Piano hinge	Concealed	Concealed	Piano hinge	N/A	Piano hinge
Insulated	with 5.0 RValue	with 5.0 RValue	with 5.9 R Value	with 3.18 R Value	with 3.85 R Value	N/A	with 13 R Value
Gasket	✓	✓	✓	✓	✓	✓	✓
Finish	White baked enamel	White baked enamel	White prime coated	Mill finish	White prime coated	White prime coated	White powder coat primed



## BA-MX

### Exterior Door with Keyed paddle Latch

#### APPLICATION

High-quality, galvanized steel door with electrostatic rust-inhibitive powder finish.

#### PRODUCT FEATURES

Grounded smooth corners of the trim and pan with the addition of closed-cell neoprene gasket and the compression latch ensures a tight seal.

#### STANDARD OPTION

Compression latch

#### AVAILABLE SIZES (In inches)

12 x 12      18 x 18      24 x 24



## BA-MX-PL

### Exterior Door with Keyed Paddle Latch for Stucco

#### APPLICATION

The BA-MX-PL is specifically designed for exterior stucco application.

#### PRODUCT FEATURES

Frame surrounded by 22 gauge expansion casing bead with metal lath. Equipped with a compression latch.

#### STANDARD OPTION

Compression latch

#### AVAILABLE SIZES (In inches)

12 x 12      18 x 18      24 x 24      30 x 22  
30 x 30      36 x 24      36 x 36



## BA-ED

### Exterior Door for Walls and Ceilings

#### APPLICATION

Provides access to exterior applications and manifest resistance to water and vapor.

#### PRODUCT FEATURES

A cylinder lock that features a knurled knob or key operation. Insulated with 1" thick rigid foam insulation with an exterior latch.

#### STANDARD OPTION

Knurled knob and key cylinder

#### AVAILABLE SIZES (In inches)

12 x 12      14 x 14      18 x 18      22 x 30  
24 x 24      24 x 36      30 x 30      36 x 36  
36 x 48



## BA-LT-4000

### Lightweight Aluminum Access Door

#### APPLICATION

Lightweight aluminum access door for walls and ceilings, durable design and lightweight components.

#### PRODUCT FEATURES

Lined with 3/4" polystyrene insulation. Gasketing between the door and the frame is 1/8" x 3/8" closed cell neoprene gasketing.

#### STANDARD OPTION

Screwdriver operated

AVAILABLE SIZES		(In inches)	
8 x 8	10 x 10	12 x 12	14 x 14
16 x 16	18 x 18	24 x 24	24 x 36
24 x 48	30 x 30	36 x 36	36 x 48
48 x 48	60 x 48	72 x 48	



## BA-PAL

### Gasketed Insulated Aluminum Access Door

#### APPLICATION

The robust all aluminum construction allows its use in large wall or ceiling openings.

#### PRODUCT FEATURES

Access door with 1" fiberglass insulation and neoprene gasket is ideal to reduce sound and air transfers between partitions.

#### STANDARD OPTION

Key operated

AVAILABLE SIZES		(In inches)	
8 x 8	12 x 12	16 x 16	18 x 18
24 x 24	24 x 36	36 x 36	



## BA-WSR

### Weather Strip Removeable Access Door

#### APPLICATION

Flush gaskets between the panel and frame ensure flush air seal in all types of application.

#### PRODUCT FEATURES

Fully removable and held in place by multiple latches. The one piece construction frame provides concealment of the rough wall openings.

#### STANDARD OPTION

Screwdriver operated

AVAILABLE SIZES		(In inches)	
8 x 8	10 x 10	12 x 12	14 x 14
16 x 16	18 x 18	24 x 24	





## BA-XTA

### Super Insulated Exterior Access Panel

#### APPLICATION

The BA-XTA provides an R-value of 13 with its 2" Thick Polyisocyanurate Insulation.

#### PRODUCT FEATURES

Designed for energy efficiency. Dual layered gasketing with adhesive backed EPDM foam and silicone rubber seals in frame and door.

#### STANDARD OPTION

Lockable compression paddle latch

#### AVAILABLE SIZES

(In inches)

12 x 12	14 x 14	18 x 18	20 x 24
20 x 30	22 x 30	22 x 36	24 x 24
24 x 30	24 x 36	24 x 48	30 x 30
30 x 36	36 x 36	36 x 48	48 x 48

# NEED ACCESS DOORS?



# CALL 1-800-483-0823

Best Access Doors offers cost-efficient and durable roof hatches equipped with gas spring operators allowing the cover to open and close with ease and inside pull handle for easy control when closing cover. Optional features include safety rails, safety ladder extension, and telescoping safety post.

Best Access Doors is very proud to announce the launch of our new product, BA-RHADD - the domed roof hatch. These hatches are designed with safety, durability and ease of operation in mind.

## APPLICATION

The BA-RHADD is designed to provide convenient, economical access to the roof of a building. The polycarbonate domes provide the benefit of a skylight as well for an upgraded aesthetically pleasing feature.

## PRODUCT FEATURES

- Equipped with gas cylinders providing an effortless opening of the door panel. Its heavy-duty design and insulation ensure long life and low maintenance.
- Self latching, zinc plated outside T handle with stainless steel inside lock and lever assembly. Unit also has inside and outside padlock provisions.





AS FEATURED ON PAGE 44						
Model	BA-RHADD	BA-TRH	BA-RAH	BA-RHGSEC	BA-SVA	BA-SVA-DL
Cover	Double-skin construction with 1" polyiso insulation to accommodate the clear polycarbonate domes	14 gauge galvanized steel with 1" fiberglass insulation	14 gauge galvanized steel with 1" insulation with R Value of 5.9	Double-skin construction ("in box type design") with 1" cellulose insulation	Double-skin construction ("in box type design") with 1" cellulose insulation	Double-skin construction ("in box type design") with 1" cellulose insulation
Curb	11 gauge aluminum with 1" thick fiberboard roof insulation at curb exterior	14 gauge galvanized steel with 1" fiber board insulation	14 gauge galvanized steel	10 gauge galvanized steel with 1" thick fiberboard roof insulation	1/8" Aluminum with 1" thick fiberboard roof insulation at curb exterior	1/8" Aluminum with 1" thick fiberboard roof insulation at curb exterior
Hinge type	Heavy duty aluminum pintle Hinge types with 3/8" pin	Galvanized steel	Heavy duty hinge type & pivot pin	Heavy duty galvanized steel pintle hinge types with 3/8" pin	Aluminum pintle hinge types with 3/8" pin	Heavy duty galvanized steel / aluminum pintle hinge types with 3/8" pin
Opening	Gas spring operators	Gas spring operators	Compression springs encased in zinc-plated telescopic tubes	Gas spring operators	Gas spring operators	Gas spring operators
Standard lock/latch mechanism	Self latching, zinc plated outside T handle with stainless steel inside lock and lever assembly	Interior and exterior handle	Exterior handle and provisions for a padlock both inside and out as well as interior handle	Self latching outside T handle heavy duty detention lock with paracentric key. Includes inside and outside padlock provisions.	Self latching Slam Latch. Supplied standard with 165° UL Listed Fusible Link. Resettable McCabe link available.	Self latching Slam Latch. Supplied standard with 165° UL Listed Fusible Link. Resettable McCabe link available.
Finish	Mill finish	White powder coat primed	Recoatable gray primer finish, with wood or fesco on curb	Baked on polyester enamel paint	Mill finish	Mill finish



## BA-RHADD

### Aluminum Domed Roof Hatch

#### APPLICATION

The BA-RHADD features Polycarbonate Domes that provide the benefit of a skylight.

#### PRODUCT FEATURES

Clear, bronze, white, combination polycarbonate double-skin dome with 1" fiberglass insulation and continuous EPDM foam weather/draft seal gasket.

#### STANDARD OPTION

Self latching, zinc plated outside T handle with stainless steel inside lock and lever assembly

#### AVAILABLE SIZES (In inches)

24 x 24	24 x 36	30 x 30	30 x 36
36 x 36			



## BA-TRH

### Galvanized Roof Hatch

#### APPLICATION

BA-TRH is made of galvanized steel and designed to offer convenient access to building roof tops.

#### PRODUCT FEATURES

Equipped with gas cylinders providing an effortless opening of the door panel. Heavy duty and insulation ensure long life and low maintenance.

#### STANDARD OPTION

Interior and exterior handle

#### AVAILABLE SIZES (In inches)

36 x 30	36 x 36
---------	---------



## BA-RAH

### Roof Hatch with Wood/Fesco Curb

#### APPLICATION

The BA-RAH is designed to provide convenient, cost saving access to the roofs of building

#### PRODUCT FEATURES

Equipped with wood or fesco cover for the curb. Standard painted in grey, however red color is also available.

#### STANDARD OPTION

Exterior handle and provisions for a padlock both inside and out as well as interior handle

#### AVAILABLE SIZES (In inches)

24 x 24	24 x 30	24 x 36	30 x 30
30 x 36	30 x 54	30 x 96	36 x 36
36 x 48	48 x 48		



## BA-RHGSEC

### Security Roof Hatch

#### APPLICATION

The BA-RHGSEC is ideal for for prisons, banks, and water treatment facilities.

#### PRODUCT FEATURES

Heavy duty detention lock with paracentric key. Unit also has inside and outside padlock provisions. Constructed with 10 gauge galvanized steel.

#### STANDARD OPTION

Self latching outside T handle heavy duty detention lock with paracentric key.

#### AVAILABLE SIZES (In inches)

24 x 24	24 x 36	30 x 30	30 x 36
36 x 36			



## BA-SVA

### Smoke Vent with Fusible Link

#### APPLICATION

An economical solution for fire ventilation by removing deadly smoke, heat, and gases.

#### PRODUCT FEATURES

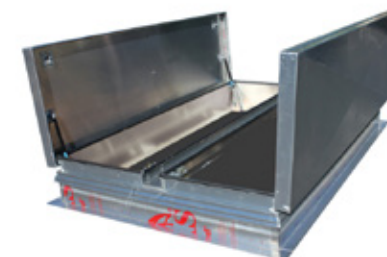
UL Listed Fusible or McCabe Resettable Links with high performance gas springs. Equipped with an inside and Outside manual release.

#### STANDARD OPTION

Self latching Slam Latch. Supplied standard with 165° UL Listed Fusible Link.

#### AVAILABLE SIZES (In inches)

24 x 24	24 x 36	30 x 36	36 x 36
---------	---------	---------	---------



## BA-SVA-DL

### Smoke Vent with Fusible Link – Double Leaf

#### APPLICATION

Provides access to the roof of a building where larger openings are required.

#### PRODUCT FEATURES

UL Listed Fusible or McCabe Resettable Links with high performance gas springs. Equipped with an inside and Outside manual release.

#### STANDARD OPTION

Self latching Slam Latch. Supplied standard with 165° UL Listed Fusible Link.

#### AVAILABLE SIZES (In inches)

48 x 48	48 x 72	48 x 90	48 x 96
60 x 60	60 x 72	60 x 90	60 x 96



## BA-LAD

### Aluminum Wall Mounted Ladder

#### APPLICATION

Aluminum wall mounted ladders are ideal to be used with any roof hatch.

#### PRODUCT FEATURES

Ladder conforms to OSHA Standards 29CFR-1910.27. This ladder can also be mounted to the floor using the optional floor bracket.

#### STANDARD OPTION

N/A

#### AVAILABLE SIZES

(In inches)

6'      8'      10'      12'      14'



## BA-RGS

### Roof Hatch Safety Rails

#### APPLICATION

Provides fall-proof protection for roof hatch openings.

#### PRODUCT FEATURES

Railing system surrounds all sides of the opening. Spring tension gate keeps the opening closed after pass through. Easy to install.

#### STANDARD OPTION

N/A

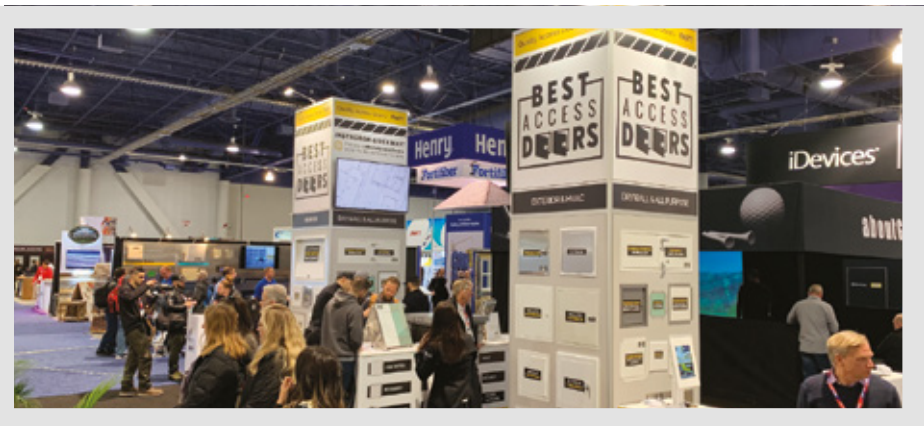
#### AVAILABLE SIZES

(In inches)

24 x 24	24 x 36	30 x 30	30 x 36
30 x 54	30 x 96	36 x 36	48 x 48







Our floor access doors provide a reliable access between building floors. We have floor doors with a channel frame for use in interior or exterior spaces where there is moisture or water; fire rated doors that protect against heat and flame; and gastight or floodtight hatches for gas or water pipes.

The Best Access Doors BA-FA-300 series aluminum floor access doors are designed for interior and exterior applications where watertightness is not required. The angle frame construction with integral anchor flange is designed to be cast into concrete.

## APPLICATION

- Designed for interior and exterior applications where watertightness is not required.
- Automatic hold open arm with red vinyl grip allows door panel to open to 90°.
- Locking door in open position, and allowing for easy control when closing door panel.
- When required, stainless steel compression springs can be provided to add lift assistance.

## PRODUCT FEATURES

- Angle frame construction with integral anchor flange is designed to be cast into concrete
- Retrofit frame design is available when unit is bolted into existing opening
- Diamond plate door panel is equipped with a flush aluminum drop handle and an automatic hold open arm

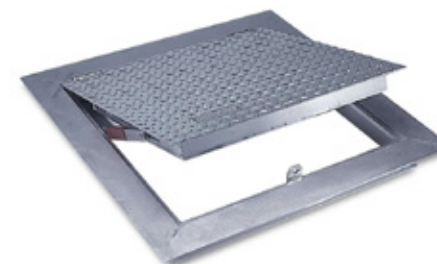
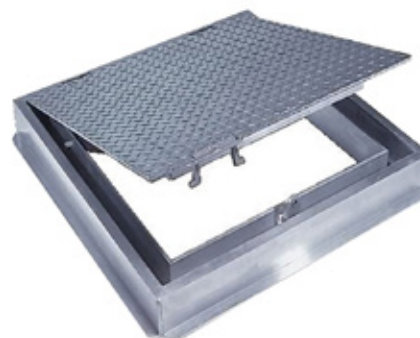
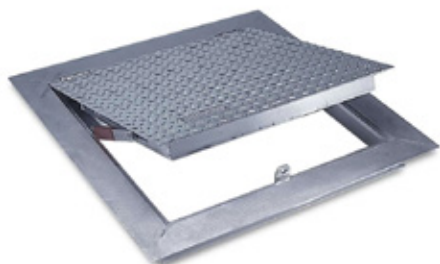


AS FEATURED  
ON PAGE 50

Model	BA-FA-300	BA-FC-300	BA-FA-H20	BA-FC-H20	BA-FT-8050	BA-FT-8080 (-1)
Material	Aluminum	Aluminum	Aluminum	Aluminum	Aluminum	Aluminum
Standard lock/latch mechanism	Flush aluminum drop handle with staple for padlock	Flush aluminum drop handle with staple for padlock	Flush aluminum drop handle with stainless steel slamlock	Flush aluminum drop handle with stainless steel slamlock	Stainless steel slam lock with a fixed inside handle	1/4" x 1" flat head screws
Loading rating	Live load of 300 pounds/sq. ft.	Live load of 300 pounds/sq. ft.	16000 lb. wheel load with 30% added for impact	16000 lb. wheel load with 30% added for impact	Live load of 150 pounds/sq. ft.	Live load of 150 pounds/sq. ft.
Recessed	N/A	N/A	N/A	N/A	1" for ceramic tile/concrete flooring	1" for ceramic tile/concrete flooring
Drain channel	N/A	✓	N/A	✓	✓	N/A
Installation	Cast into concrete	Cast into concrete	Cast into concrete	Cast into concrete	Cast into concrete	Bolt into place
Fire rating	N/A	N/A	N/A	N/A	N/A	N/A
Floodtight/gastight	N/A	N/A	N/A	N/A	N/A	N/A

Model	BA-FT-8040	BA-FD-8060	BA-PPA	BA-PPA-RE	BA-FRFD	BA-AW-APS
Material	Aluminum	Aluminum	Aluminum	Aluminum	Aluminum with stainless steel bottom frame	Aluminum
Standard lock/latch mechanism	Stainless steel slamlock with a fixed inside handle	1/4" x 1" flat head screws	Recessed 4" removable handle operated cam latch	4" removable handle operated cam latch	Stainless steel slam latch assembly with interior release	Type 316 stainless steel floodtight cam locks and flush floodtight handle
Loading rating	Live load of 150 pounds/sq. ft.	Live load of 150 pounds/sq. ft.	Live load of 300 pounds/sq. ft.	Live load of 300 pounds/sq. ft.	Live load of 150 pounds/sq. ft.	Live load of 1560 pounds/per sq. ft.
Recessed	N/A	N/A	N/A	Standard recessed of 1/4"	N/A	N/A
Drain channel	N/A	N/A	N/A	N/A	N/A	N/A
Installation	Cast into concrete	Cast into concrete	Bolt into place	Bolt into place	Cast into concrete	Cast into concrete
Fire rating	N/A	N/A	N/A	N/A	✓	N/A
Floodtight/gastight	N/A	N/A	N/A	N/A	N/A	✓





## BA-FA-300

### Cast in Place Flush Floor Door

#### APPLICATION

Designed for interior and exterior applications where watertightness is not required.

#### PRODUCT FEATURES

Equipped with an automatic hold open arm for easy access. Retrofit frame design is available when unit is bolted into existing opening.

#### STANDARD OPTION

Flush aluminum drop handle with staple for padlock

#### AVAILABLE SIZES

(In inches)

24 x 24    24 x 36    30 x 30    36 x 36

## BA-FC-300

### Cast in Place Watertight Floor Door

#### APPLICATION

Indoor or Outdoor applications where dirt and water are prevented from falling into work area.

#### PRODUCT FEATURES

Channel frame construction with 1 1/2" drainage coupling and integral anchor flange. Drainage is provided through threaded coupling in channel.

#### STANDARD OPTION

Flush aluminum drop handle with staple for padlock

#### AVAILABLE SIZES

(In inches)

24 x 24    24 x 36    30 x 30    36 x 36

## BA-FA-H20

### Cast in Place Floor Door for H20 Loading

#### APPLICATION

Designed for interior and exterior applications where watertightness is required.

#### PRODUCT FEATURES

Designed for off-street locations that may occasionally receive AASHTO H-20-44 wheel loads. Equipped with a flush aluminum drop handle.

#### STANDARD OPTION

Flush aluminum drop handle with stainless steel slamlock

#### AVAILABLE SIZES

(In inches)

24 x 24    24 x 36    30 x 30    36 x 36



## BA-FC-H20

### Floor Door for H20 Loading with Channel Frame

#### APPLICATION

Designed for interior and exterior applications where watertightness is required with H20 loading.

#### PRODUCT FEATURES

Channel frame construction with 1½" drainage coupling designed for off-street locations that may occasionally receive AASHTO H-20-44 wheel loads.

#### STANDARD OPTION

Flush aluminum drop handle with stainless steel slamlock

#### AVAILABLE SIZES (In inches)

24 x 24	24 x 36	30 x 30	36 x 36
---------	---------	---------	---------



## BA-FT-8050

### Hinged Floor Door with 1" Recess for Ceramic Tile / Concrete

#### APPLICATION

For applications that require an access opening. Blends in with the surrounding floor material

#### PRODUCT FEATURES

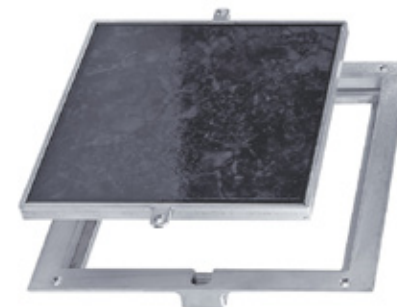
Recessed 1" to accommodate ceramic tile/concrete flooring. Door is equipped with a flush aluminum drop handle and an automatic hold open arm.

#### STANDARD OPTION

Stainless steel slam lock with a fixed inside handle

#### AVAILABLE SIZES (In inches)

24 x 24	24 x 36	30 x 30	36 x 36
---------	---------	---------	---------



## BA-FT-8080-1

### Removeable Floor Door - 1" Recess for Ceramic Tile / Concrete

#### APPLICATION

Provides an access opening that blends in with ceramic tile, concrete, or even terrazo.

#### PRODUCT FEATURES

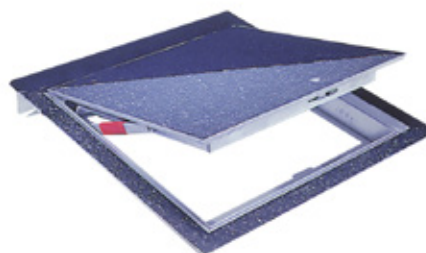
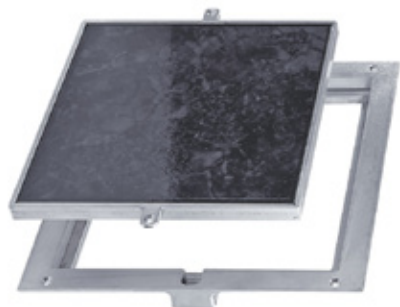
Removeable door frame. The securing screws are located in the flange of the mounting frame.

#### STANDARD OPTION

1/4" x 1" flat head screws

#### AVAILABLE SIZES (In inches)

12 x 12	18 x 18	24 x 24
---------	---------	---------



## BA-FT-8080

### Removeable Floor Door - 1/8" Recess for Vinyl Tile / Carpet

#### APPLICATION

For applications that require an access opening. Blends in with the surrounding floor material

#### PRODUCT FEATURES

Recessed 1/8" to accommodate carpeting and vinyl tile. Securing screws are located in the flange of the mounting frame

#### STANDARD OPTION

1/4" x 1" flat head screws

#### AVAILABLE SIZES

(In inches)

12 x 12      18 x 18      24 x 24

## BA-FT-8040

### Hinged Floor Door with 1/8" Recess for Vinyl Tile / Carpet

#### APPLICATION

For interior and exteriors requiring an access opening that blends in with surrounding floor material.

#### PRODUCT FEATURES

Recessed 1/8" to accommodate carpeting and vinyl tile. Door panel is equipped with a flush aluminum drop handle and an automatic hold open arm.

#### STANDARD OPTION

Stainless steel slamlock with a fixed inside handle

#### AVAILABLE SIZES

(In inches)

24 x 24      24 x 36      30 x 30      36 x 36

## BA-FD-8060

### Removeable Flush Floor Door - Diamond Plated

#### APPLICATION

Designed for interior and exterior applications that require an access opening that is removable.

#### PRODUCT FEATURES

Flush Diamond Plate door panel and removable via screws. 1/4" aluminum diamond plate reinforced for the live load of 150 pounds/per sq. ft.

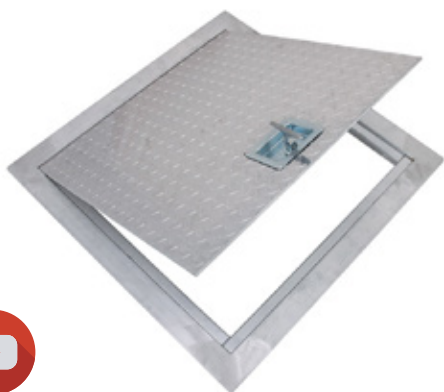
#### STANDARD OPTION

1/4" x 1" flat head screws

#### AVAILABLE SIZES

(In inches)

12 x 12      18 x 18      24 x 24



## BA-PPA

### Flush Aluminum Floor Door

#### APPLICATION

Built for interior use to provide a reliable and secure access between building floors.

#### PRODUCT FEATURES

Thick aluminum frame construction make it the ideal solution for either existing cement floors or poured-in-place concrete.

#### STANDARD OPTION

Recessed 4" removable handle operated cam latch

#### AVAILABLE SIZES

(In inches)

24 x 24      24 x 36



## BA-PPA-RE

### Recessed Flush Aluminum Floor Door

#### APPLICATION

Will accommodate all types of floor coverings up to 3/4" in thickness.

#### PRODUCT FEATURES

It offers an attractive but equally practical access between the interior floors of commercial buildings.

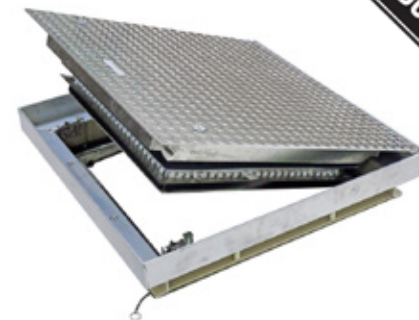
#### STANDARD OPTION

4" removable handle operated cam latch

#### AVAILABLE SIZES

(In inches)

24 x 24      24 x 36



## BA-FRFD

### Fire Rated Floor Door

#### APPLICATION

Maintains the fire rating of a 2-hour floor ceiling assembly. Designed for interior applications

#### PRODUCT FEATURES

Flush aluminum diamond plate cover. Warnock Hersey International 2 hour fire rating. Tested to NFPA 288 ; ASTM E 119

#### STANDARD OPTION

Stainless steel slam latch assembly with interior release

#### AVAILABLE SIZES

(In inches)

24 x 24      24 x 36      24 x 48      30 x 30  
30 x 36      36 x 36      36 x 48      48 x 48





## BA-AW-APS

### Floodtight/Gastight Floor Door

#### APPLICATION

Designed for interior and exterior applications where floodtight or gastight is required.

#### PRODUCT FEATURES

Angle frame construction with anchors welded around the frame. Diamond plated door panel is reinforced to hold up to 25 ft. head of water.

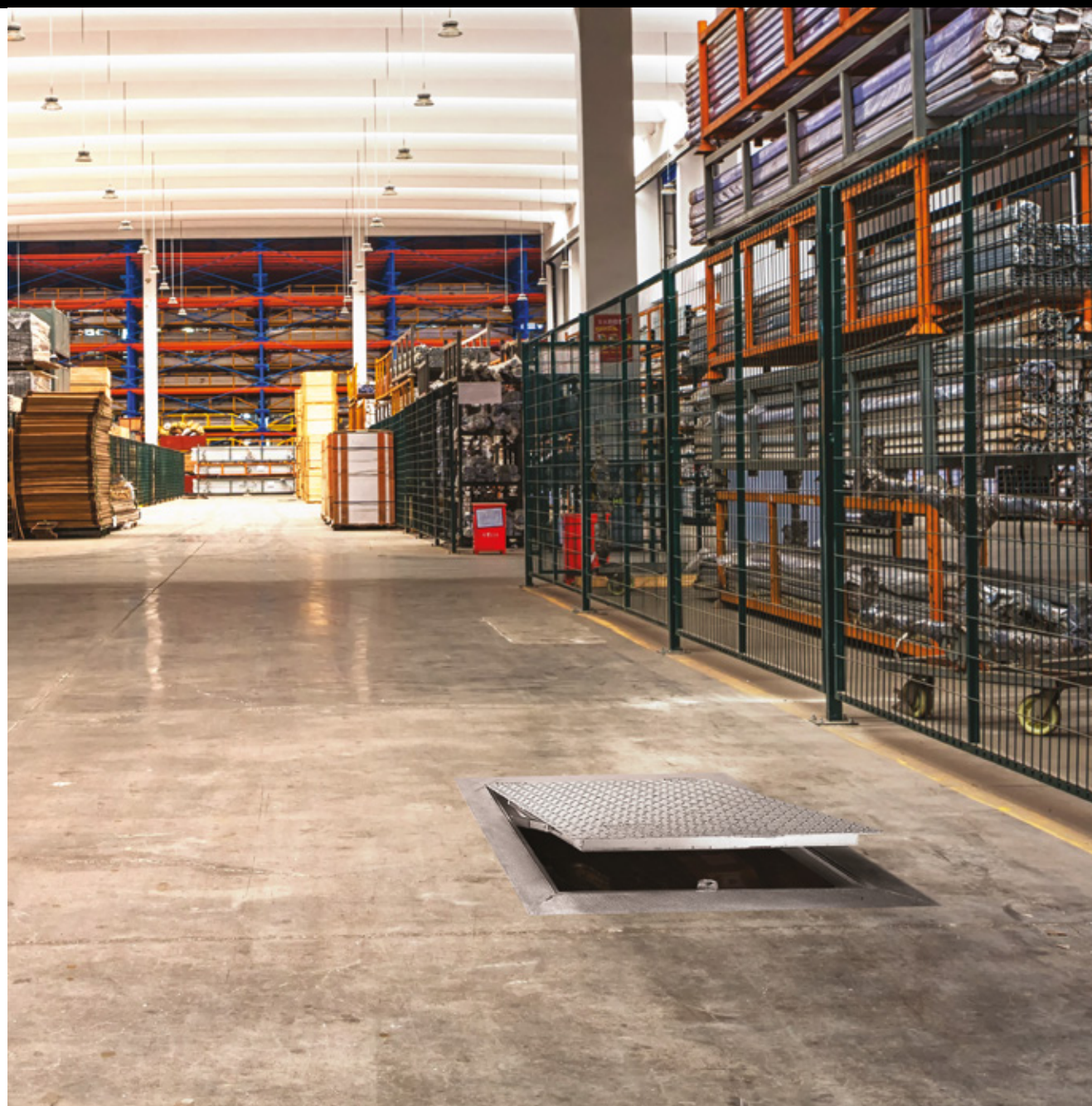
#### STANDARD OPTION

Type 316 stainless steel floodtight cam locks and flush floodtight handle

#### AVAILABLE SIZES

(In inches)

24 x 24	24 x 36	30 x 30	36 x 36
---------	---------	---------	---------



## ACCESS PANEL

### KEYS

#### KEY OPERATED CAM LATCH



BA-ADWT  
 BA-ADWT-SS  
 BA-AHD  
 BA-AT  
 BA-AT-5020  
 BA-BTV  
 BA-CTR  
 BA-CTR-MAG  
 BA-DRD  
 BA-EDG-GYP  
 BA-FI  
 BA-F2A  
 BA-F2DF  
 BA-F3  
 BA-FSR  
 BA-LHD-180  
 BA-LT-4000  
 BA-MS-7000  
 BA-PFN  
 BA-PFN-GYP  
 BA-PFN-PLY  
 BA-SF-2000  
 BA-UF-5000  
 BA-UF-5000-SS  
 BA-WSR

#### SCREWDRIVER CAM LATCH



BA-ARVB  
 BA-ASVB  
 BA-CTR  
 BA-CTR-MAG  
 BA-FI  
 BA-F2A  
 BA-F2DF  
 BA-FSR  
 BA-PAL

### HEX HEAD CAM LATCH



BA-ACD-2064  
 BA-ACF-2064  
 BA-ADWT  
 BA-ADWT-SS  
 BA-AHD  
 BA-ARVB  
 BA-ASVB  
 BA-AT  
 BA-AT-5020  
 BA-BTV  
 BA-CTR  
 BA-CTR-MAG  
 BA-EDG-GYP  
 BA-FI  
 BA-F2A  
 BA-F2DF  
 BA-F2DF  
 BA-F3  
 BA-FSR  
 BA-PAL  
 BA-SF-2000  
 BA-UF-5000  
 BA-UF-5000-SS  
 BA-WSR

#### PINNED HEX HEAD CAM LATCH



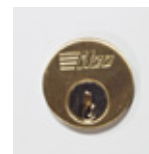
BA-ACD-2064  
 BA-ACF-2064  
 BA-AHD  
 BA-CTR  
 BA-CTR-MAG  
 BA-EDG-GYP  
 BA-FI  
 BA-F2A  
 BA-F2DF  
 BA-F3  
 BA-FSR  
 BA-PFN-PLY

### MORTISE CYLINDER LOCK



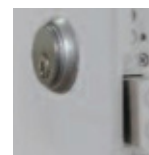
BA-AHD  
 BA-CTR  
 BA-CTR-MAG  
 BA-DRD  
 BA-EDG-GYP  
 BA-FI  
 BA-F2A  
 BA-F2DF  
 BA-FD2D  
 BA-FSR  
 BA-HSP  
 BA-LHD-180  
 BA-MS-7000  
 BA-PFI  
 BA-PFI-GYP  
 BA-PFI-HS  
 BA-PFI-PLY  
 BA-PFI-SS  
 BA-PFN  
 BA-PFN-GYP  
 BA-PFN-PLY  
 BA-PHS  
 BA-SP

#### RIM CYLINDER LOCK



BA-FB-5060-TD  
 BA-FW-5015  
 BA-MS-7000  
 BA-WD-8000

### MORTISE DEADBOLT LOCK



BA-DRD  
 BA-LHD-180  
 BA-PFI  
 BA-PFI-GYP  
 BA-PFI-HS  
 BA-PFI-PLY  
 BA-PFI-SS  
 BA-PFN  
 BA-PFN-GYP  
 BA-PFN-PLY  
 BA-PHS

## HANDLE OPERATED CAM LATCH



BA-AHD  
BA-CTR  
BA-CTR-MAG  
BA-FD2D  
BA-WSR

## HANDLE OPERATED SLAM LATCH



BA-DRD  
BA-EDG-GYP  
BA-LHD-180  
BA-PFI  
BA-PFI-GYP  
BA-PFI-HS  
BA-PFI-PLY  
BA-PFI-SS  
BA-PFN  
BA-PFN-PLY

## TORX HEAD CAM LATCH



BA-ADWT  
BA-ADWT-SS  
BA-MS-7000

## SPANNER HEAD CAM LATCH



BA-ADWT  
BA-ADWT-SS  
BA-ARVB  
BA-ASVB  
BA-AT-5020  
BA-MS-7000  
BA-SF-2000  
BA-UF-5000  
BA-UF-5000-SS

## MATERIAL

### STAINLESS STEEL



BA-ADWT  
BA-AHD  
BA-AT  
BA-AT-5020  
BA-BTV  
BA-CD-5080-F  
BA-CD-5080-HP  
BA-CDSS-6030  
BA-CTR  
BA-DRD  
BA-ED  
BA-EDG-GYP  
BA-FB-5060-TD  
BA-HSP  
BA-MX  
BA-MX-PL  
BA-PFI  
BA-PFI-GYP  
BA-PFI-HS  
BA-PFI-PLY  
BA-PFN  
BA-PFN-PLY  
BA-PFU  
BA-SF-2000  
BA-SP  
BA-STC  
BA-TD-5025  
BA-UF-5000  
BA-UFLV  
BA-WD-8000  
BA-WSR

### ALUMINUM



BA-CDSS-6030  
BA-CD-5080-HP  
BA-CD-5080-F

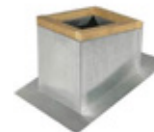
## GASKET



BA-AHD  
BA-EDG-GYP  
BA-CTR  
BA-DRD  
BA-CTR-MAG

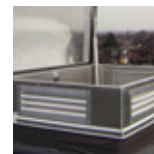
## ROOF HATCH

### PITCHED CURB



BA-RHADD  
BA-RHGSEC  
BA-RAH

### LOUVERED CURBS



BA-RHADD  
BA-RHGSEC  
BA-SVA  
BA-SVA-DL

### STAINLESS STEEL CONSTRUCTION



BA-RHADD  
BA-RHGSEC

### ALUMINUM CONSTRUCTION



BA-RHADD  
BA-TRH





## CONTACT US

Call toll free world wide.

Toll Free Phone: 1-800-483-0823

Toll Free Fax: 1-888-828-6021

[www.BestAccessDoors.com](http://www.BestAccessDoors.com)



Follow **Best Access Doors**





## USA

Delaware - 427 N Tatnall St, #76520 Wilmington,  
DE 19802-2230

## CANADA

385 Wilson Street East, Suite 302 Ancaster,  
ON, L9G 2C1

## CONTACT US

Call toll free world wide.

☎ Phone: **1-800-483-0823**

📠 Fax: **1-888-828-6021**

✉ [info@bestaccessdoors.com](mailto:info@bestaccessdoors.com)

## FOLLOW Best Access Doors



[www.BestAccessDoors.com](http://www.BestAccessDoors.com)

